

# DEAL EQUIPMENT REPORT

INNOVATIVE TECHNOLOGIES  
FOR BRIDGE CONSTRUCTION





## **ENGINEERING AND SPECIAL EQUIPMENT FOR BRIDGE CONSTRUCTION**

Deal is a world leader in the field of specialised equipment for bridge and viaduct construction and all associated engineering services.

Deal equipment has been used in the construction of over 5.9 million sqm of decks all over the world with Deal's parent company executing directly roughly 2.5 million sqm of these.

Deal provides services that range from conceptual and detailed design of pre-fabrication and erection systems, to the design and supply of specialised equipment such as launching trusses, straddle carriers, gantry cranes, casting machines as well as other custom lifting, moving and casting devices.





## DEAL EQUIPMENT REPORT

### INNOVATIVE TECHNOLOGIES FOR BRIDGE CONSTRUCTION

#### 1. LAUNCHING GIRDERS FOR CANTILEVER ERECTION

- 7 Model LGS-140-84
- 8 Model LGS-1300-45
- 9 Model LGS-75-75
- 10 Model LGS-110-100
- 11 Model LGS-200-100
- 12 Model LGS-C-O-40-53
- 13 Model LGS-100-55
- 14 Model LGS-90-90
- 15 Model LGS-110-120
- 16 Model LGS-110-55
- 17 Model LGS-110-120 L
- 18 Model LGS-80-60
- 19 Model LGS-S-SSC-O-80-100

#### 2. LAUNCHING GIRDERS FOR SPAN BY SPAN ERECTION

- 23 Model LGS-1200-55
- 24 Model LGS-SS-O-750-44
- 25 Model LG-1300-45-  
Span by Span Configuration
- 26 Model LGS-SS-O-340-36
- 27 Model LGS-SS-O-185-30
- 28 Model LGS-SS-O-340-40
- 29 Model LGS-SS-U-1040-46
- 30 Model LGS-SS-U-1135-46
- 31 Model LGS-SS-U-1150-45
- 32 Model LGS-SS-U-2500-60
- 33 Model LGS-SSC-O-525-35 (60-60)
- 34 Model LGS-SSC-O-480-37 (60-65)
- 35 Model LGS-SSC-O-460-36 (60-50)
- 36 Model LGS-SS-U-300-30

#### 3. LOADERS

- 39 Model SL-95

#### 4. LIFTING FRAMES

- 43 Model LF-BC-100
- 44 Model LC-BC-80
- 45 Model LC-BC-70
- 46 Model LC-BC-53

#### 5. LAUNCHING GIRDERS FOR FULL SPAN ERECTION

- 49 Model LGB-1600-50

#### 6. STRADDLE CARRIER SYSTEMS FOR FULL SPAN ERECTION

- 53 Model LC-775-30
- 54 Model LC-740-31.5

#### 7. MOVABLE SCAFFOLDING SYSTEMS

- 57 Model MSS-2X20-12.1
- 58 Model MSS-45-15.5

#### 8. LAUNCHING GIRDERS FOR BEAM ERECTION

- 61 Model LG-120-40
- 62 Model LG-215-40
- 63 Model LGB-SS-O-70-30
- 64 Model LGB-SS-O-150-50
- 65 Model LGB-SS-O-80-44
- 66 Model LGB-SS-45-33.6
- 67 Model LGB-120-45
- 68 Model LGB-220-65
- 69 Model LGS-O-20-20.5
- 70 Model LGB-140-45
- 71 Model Pile Driver  
Launching Truss

#### 9. SHORT LINE MOULDS

- 75 Model SL-C-2.04-10.5
- 76 Model SL-V-5.8-10.3
- 77 Model SL-V-4.96-17.9
- 78 Model SL-C-3.4-10.3
- 79 Model SL-C-2.1-4.2
- 80 Model SL-C-3.0-18.3
- 81 Model SL-C-1.876-7.95
- 82 Model SL-C-2.1-8.45
- 83 Model SL-C-2.4-10.0
- 84 Model SL-V-24.4-5.5
- 85 Model SL-C-2.30-3.50
- 86 Model SL-C-2.66-5.14
- 87 Model SL-C-2.66-7.69
- 88 Model SL-C-2.16-6.50
- 89 Model SL-C-2.16-3.90
- 90 Model SL-C-2.20-16.50
- 91 Model SL-C-1.80-8.25
- 92 Model SL-V-3.50-12.80
- 93 Model SL-V-5.40-11.00

#### 10. LONG LINE MOULDS

- 97 Model LL-C-4.0-10.65
- 98 Model LL-C-2.04-10.18-32.0
- 99 Model LL-V-4.5-8.5
- 100 Model LL-V-8.5-25.0
- 101 Model LL-C-2.30-8.10

#### 11. TRANSPORTERS

- 105 Model TE-1600-17

#### 12. STRADDLE CARRIERS

- 109 Model ML-50
- 110 Model ML-800-A
- 111 Model SC-720-32
- 112 Model LB-40
- 113 Model SC-100-9.6
- 114 Model SC-115-16.8
- 115 Model SC-90-6.6
- 116 Model LC-85-5.6
- 117 Model SC-110-15

#### 13. GANTRY CRANES

- 121 Model GC-800-56
- 122 Model GC-75+75-32
- 123 Model GC-450-19
- 124 Model GC-100-20.5
- 125 Model GC-40-28
- 126 Model GC-100-27.5
- 127 Model GC-80-25
- 128 Model GC-75-19
- 129 Model GC-70-16

#### 14. HOPPERS

- 133 Hopper 240
- 134 Hopper 54

#### 15. EQUIPMENT FOR OIL AND GAS INDUSTRY

- 137 Cable Reel

#### 16. OTHER EQUIPMENT

- 141 Manipulator  
and Stressing Platforms



# 1 LAUNCHING GIRDERS FOR CANTILEVER ERECTION

DEAL EQUIPMENT REPORT



## LAUNCHING GIRDER Model LGS-140-84

### EXECUTION

**Client:** Bouygues Travaux Publics SA.  
**Project:** East Tsing Yi Viaduct (Hong Kong)  
**Year of manufacture:** 2005  
**Number of pieces:** 1

### CHARACTERISTICS

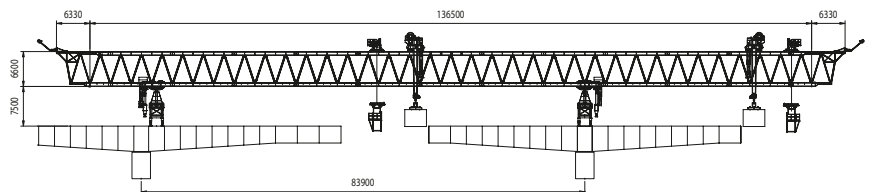
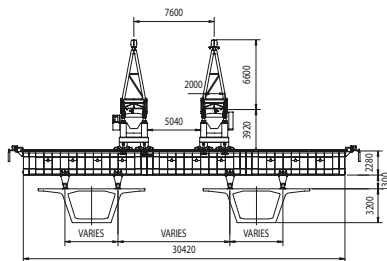
**Max span length:** 84 m  
**Lifting capacity:** 140 ton  
**Max cross-fall:** 8%  
**Max gradient:** 5%  
**Min radius:** 125 m  
**Total weight of the equipment:** 692 ton

### MAIN TRUSS

**Length:** 136.50 m  
**Height:** 6.60 m  
**Width:** 2 m  
**Distance between C/L of trusses:** 7.60 m  
**Clearance between trusses:** 5.04 m  
**Unit weight:** 1.20 ton/m x 2

### SPEEDS

**Lifting:**  
**with load** 0.1 ÷ 1.5 m/min  
**without load** 0.1 ÷ 5.0 m/min  
**Travelling:**  
**with load** 0.2 ÷ 12.0 m/min  
**without load** 0.2 ÷ 15.0 m/min



**LAUNCHING GIRDER**  
**Model LGS-1300-45**  
**Cantilever configuration**

**EXECUTION**

**Client:** Flatiron General Partneriat  
**Project:** Port Mann Bridge Road (Canada)  
**Year of manufacture:** 2009  
**Number of pieces:** 1

**CHARACTERISTICS**

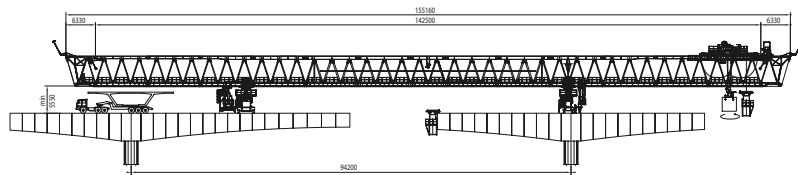
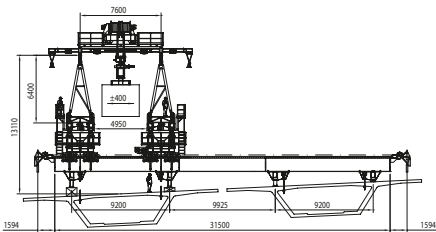
**Max span length:** 94 m  
**Lifting capacity:** 100 ton  
**Max cross-fall:** ± 6%  
**Max gradient:** ± 5%  
**Min radius:** 500 m  
**Total weight of the equipment:** 690 ton

**MAIN TRUSSES**

**Length:** 142.50 m  
**Height:** 6.40 m  
**Centerline distance:** 7.60 m  
**Clearance between trusses:** 4.95 m

**SPEEDS**

**Lifting:** 0.4 ÷ 1.5 m/min  
**Travelling:** 1.5 ÷ 12.0 m/min  
**Self-launch:**  
**truss** 1.5 ÷ 5.5 m/min  
**support** 2.5 ÷ 10.0 m/min  
**transversal movement** 0.4 ÷ 3.0 m/min



## LAUNCHING GIRDER Model LGS-75-75

### EXECUTION

**Client:** Bilfinger & Berger  
**Project:** Lagos Osborne Bridge Project (Nigeria)  
**Year of manufacture:** 2009  
**Number of pieces:** 1

### CHARACTERISTICS

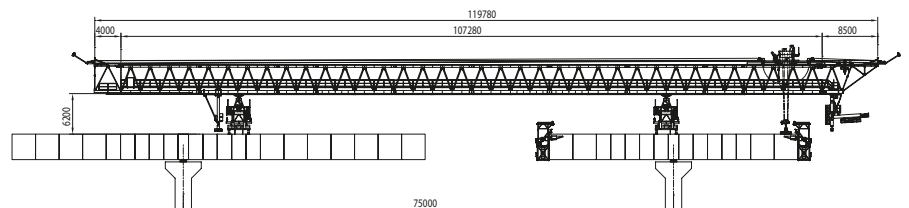
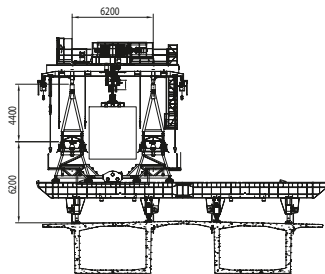
**Max cantilever span length:** 75 m  
**Max span length:** 55 m  
**Lifting capacity:** 75 ton  
**Max cross-fall:** 3.5%  
**Max gradient:** 4%**Min radius:** 650 m  
**Total weight of the equipment:** 316 ton

### MAIN TRUSSES

**Length:** 107.28 m  
**Height:** 4.40 m  
**Width:** 1.80 m  
**Centerline distance:** 6.20 m  
**Unit weight:** 1.49 ton/m x 2

### SPEEDS

**Lifting:**  
**with load** 0.36 ÷ 1.5 m/min  
**without load** 0.72 ÷ 3.0 m/min  
**Travelling:** 3.0 ÷ 10.0 m/min  
**Self launch:** 1.5 ÷ 5.0 m/min



## LAUNCHING GIRDER Model LGS-110-100

### EXECUTION

**Client:** Otay River Constructors

**Project:** Otay River Bridge (California – USA)

**Year of manufacture:** 2004

**Number of pieces:** 1

### CHARACTERISTICS

**Max span length:** 90.50 m

**Lifting capacity:** 90 ton

**Total weight of the equipment:** 392 ton

### MAIN TRUSSES

**Length:** 135 m

**Height:** 5.12 m

**Width:** 1.89 m

**Distance between C/L of trusses:** 6 m

**Clearance between trusses:** 4.08 m

**Unit weight:** 0.83 ton/m x 2

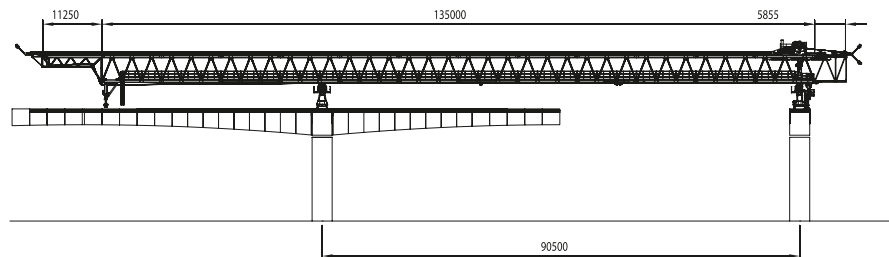
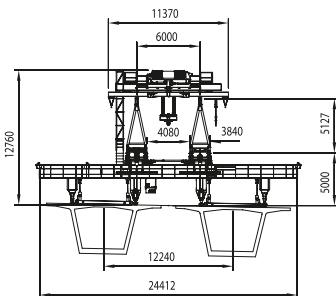
### SPEEDS

**Lifting:** 0.76 m/min

**Travelling:**

**with load** 4.0 m/min

**without load** 8.0 m/min





## LAUNCHING GIRDER Model LGS 200-100

### EXECUTION

**Client:** Granite Construction Co.  
**Project:** Hathaway Bridge (Florida – USA)  
**Year of manufacture:** 2001  
**Number of pieces:** 1

### CHARACTERISTICS

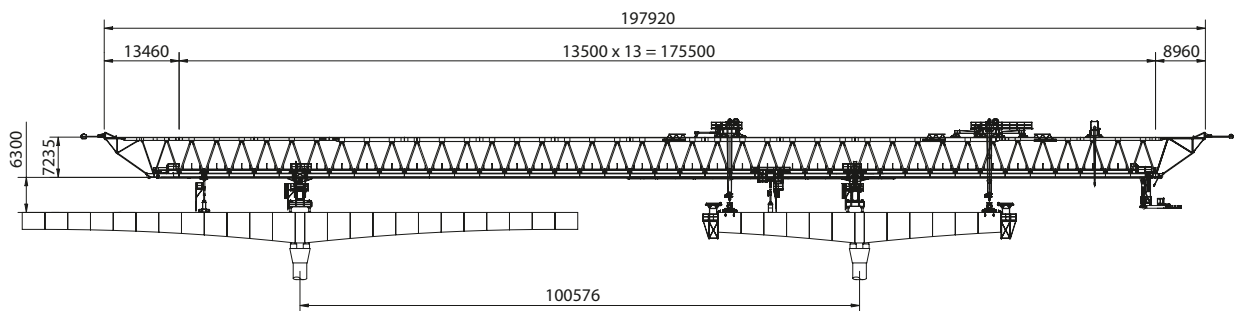
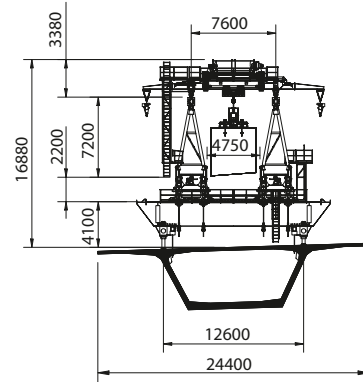
**Max span length:** 100.60 m  
**Lifting capacity:** 200 ton  
**Total weight of the equipment:** 932 ton

### MAIN TRUSSES

**Length:** 175.50 m  
**Height:** 7.20 m  
**Width:** 2.20 m  
**Distance between C/L of trusses:** 7.60 m  
**Clearance between trusses:** 4.75 m  
**Unit weight:** 1.5 ton/m x 2

### SPEEDS

**Lifting:** 0.2 ÷ 3.0 m/min  
**Travelling:** 0.5 ÷ 10.0 m/min



## LAUNCHING GIRDER Model LGS-C-0-40-53

### EXECUTION

**Client:** Rizzani de Eccher USA Ltd

**Project:** Dulles LRT (Washington - USA)

**Year of manufacture:** 2009

**Number of pieces:** 1

### CHARACTERISTICS

**Max span length:** 53.50 m

**Lifting capacity:** 450 ton

**Max cross-fall:**  $\pm 0\%$

**Max gradient:**  $\pm 4\%$

**Min radius:** 1164 m

**Total weight:** 291.20 ton

### MAIN TRUSSES

**Length:** 101.25 m

**Height:** 5.114 m

**Centerline distance:** 6 m

**Clearance between trusses:** 4.08 m

**Unit weight:** 0.825 ton/m x 2

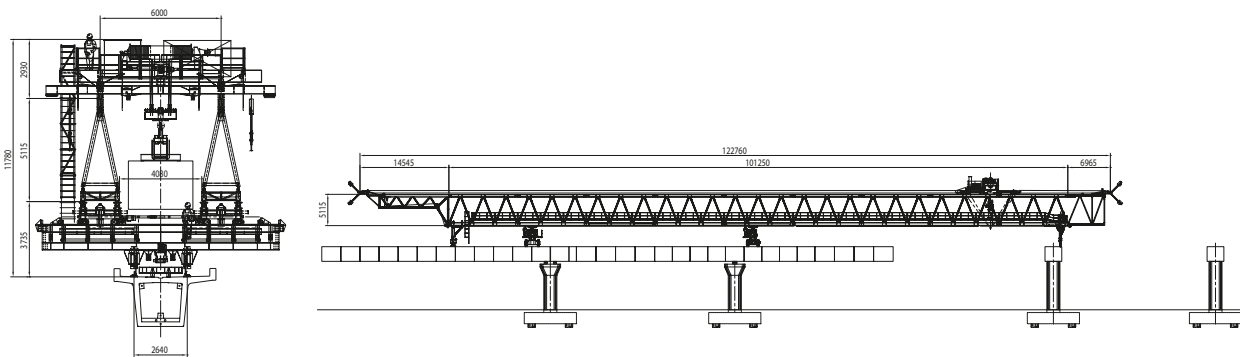
### SPEEDS

**Lifting:**

**with load:** 1.14 m/min

**Travelling:** 4.27 ÷ 8.59 m/min

**Self launch:** 4.27 m/min



## LAUNCHING GIRDER Model LGS-100-55

### EXECUTION

**Client:** Malibu – Ashtrom  
**Project:** South Ayalon Interchange (Tel Aviv - Israel)  
**Year of manufacture:** 1994  
**Number of pieces:** 1

### CHARACTERISTICS

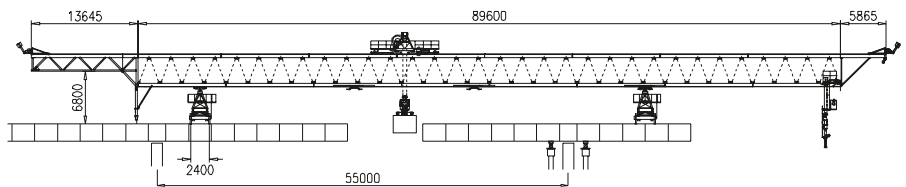
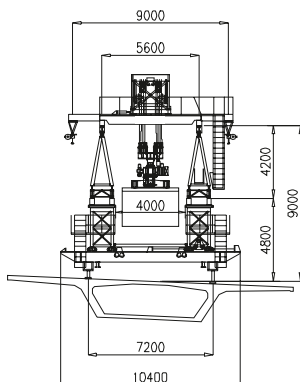
**Max span length:** 55 m  
**Winch lifting capacity:** 100 ton  
**Total weight of the equipment:** 225 ton

### MAIN TRUSSES

**Length:** 89.60 m  
**Height:** 4.20 m  
**Width:** 1.15 m  
**Distance between C/L of trusses:** 5.60 m  
**Clearance between trusses:** 4 m  
**Unit weight:** 0.7 ton/m x 2

### SPEEDS

**Lifting:** 0.9 m/min  
**Travelling:**  
**with load** 7 m/min  
**without load** 14 m/min



## LAUNCHING GIRDER Model LGS-90-90

### EXECUTION

**Client:** Rizzani de Eccher Spa

**Projects:** Messina - Palermo Motorway (Italy)  
S.S. 28 bis Ceva - Savona Expressway (Italy)  
S.S. 131 and S.S. 389 Interchange (Italy)

**Year of manufacture:** 1991

**Number of pieces:** 1

### CHARACTERISTICS

**Max span length:** 90 m

**Winch lifting capacity:** 90 ton

**Total weight of the equipment:** 275 ton

### MAIN TRUSSES

**Length:** 114 m

**Height:** 4.50 m

**Width:** 1.40 m

**Distance between C/L of trusses:** 5.60 m

**Clearance between trusses:** 3.61 m

**Unit weight:** 0.75 ton/m x 2

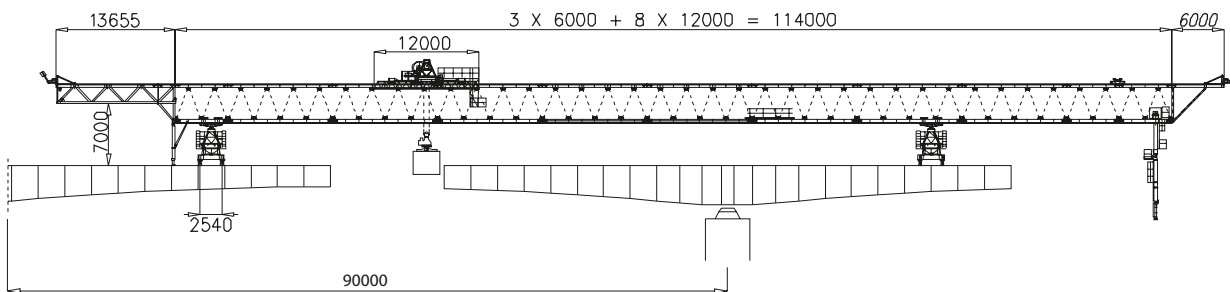
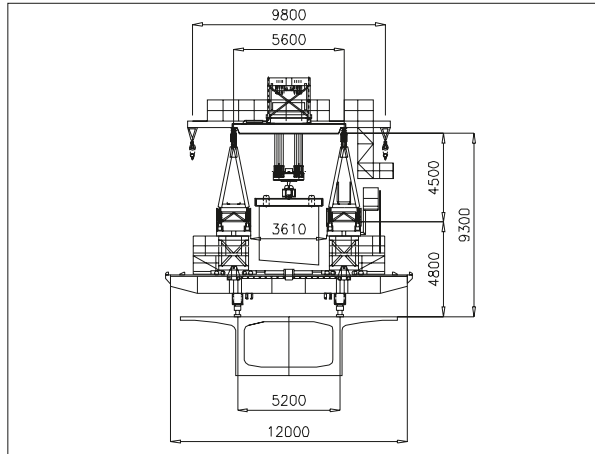
### SPEEDS

**Lifting:** 0.8 m/min

**Travelling speed:**

**with load** 7 m/min

**without load** 14 m/min



## LAUNCHING GIRDER Model LGS-110-120

### EXECUTION

**Client:** GLF Construction Corporation  
**Project:** Sea Breeze Bridge (Florida – USA)  
**Year of manufacture:** 1990  
**Number of pieces:** 1

### CHARACTERISTICS

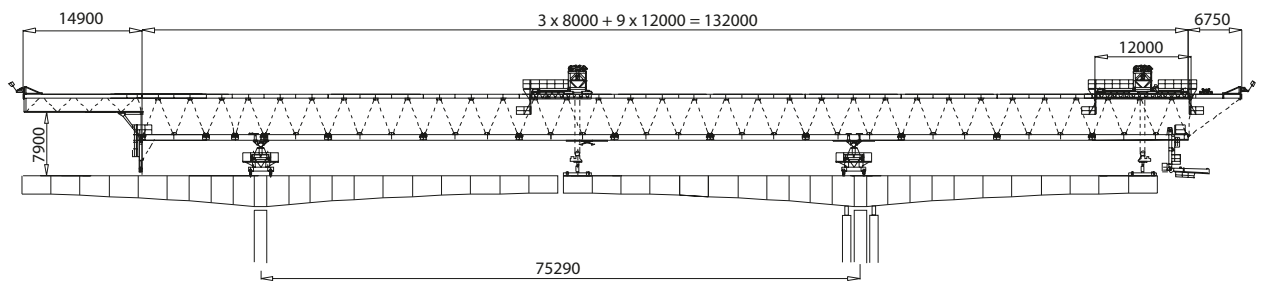
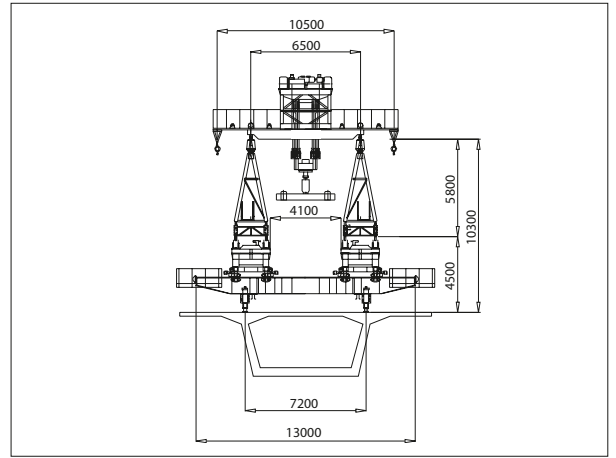
**Max span length:** 120 m  
**Lifting capacity:**  
**front winch** 100 ton  
**rear winch** 80 ton  
**Total weight of the equipment:** 380 ton

### MAIN TRUSSES

**Length:** 140 m  
**Height:** 5.80 m  
**Width:** 1.80 m  
**Distance between C/L of trusses:** 6.50 m  
**Clearance between trusses:** 4.10 m  
**Unit weight:** 0.9 ton/m x 2

### SPEEDS

**Lifting:**  
**with load** 0.15 m/min  
**without load** 1.5 m/min  
**Travelling:**  
**with load** 6 m/min  
**without load** 12 m/min



# LAUNCHING GIRDER

## Model LGS-110-55

### EXECUTION

**Client:** Joannou - Paraskevaides  
**Project:** Limassol – Paphos Motorway (Cyprus)  
**Year of manufacture:** 1990  
**Number of pieces:** 1

### CHARACTERISTICS

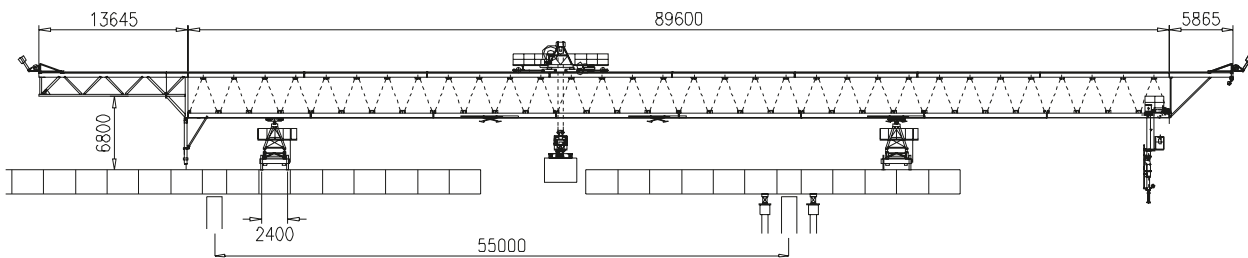
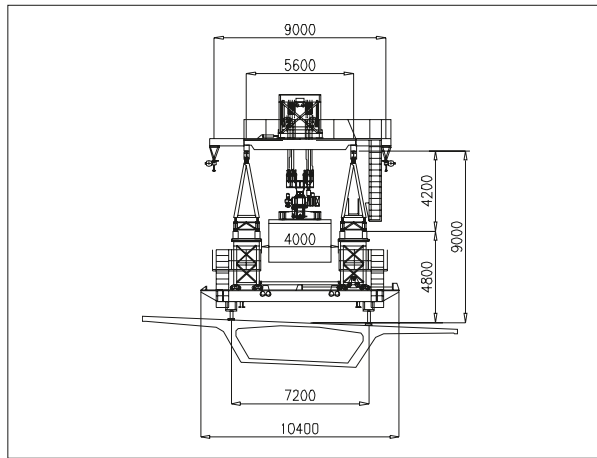
**Max span length:** 55 m  
**Winch lifting capacity:** 110 ton  
**Total weight of the equipment:** 225 ton

### MAIN TRUSSES

**Length:** 89.60 m  
**Height:** 4.20 m  
**Width:** 1.15 m  
**Distance between C/L of trusses:** 5.60 m  
**Clearance between trusses:** 4 m  
**Unit weight:** 0.7 ton/m x 2

### SPEEDS

**Lifting:** 0.9 m/min  
**Travelling:**  
**with load** 7 m/min  
**without load** 14 m/min





## LAUNCHING GIRDER Model LGS-110-120 L

### EXECUTION

**Client:** Strait Crossing a J.V.  
**Project:** Confederation Bridge (Canada)  
**Year of manufacture:** 1989  
**Number of pieces:** 1

### CHARACTERISTICS

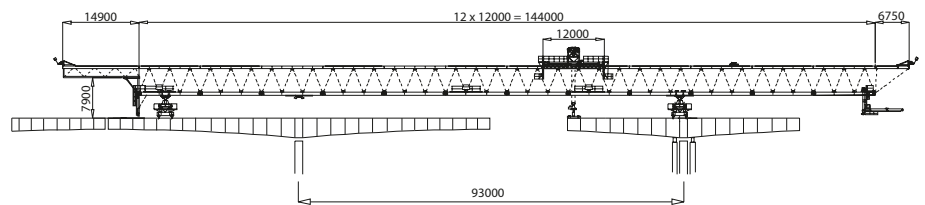
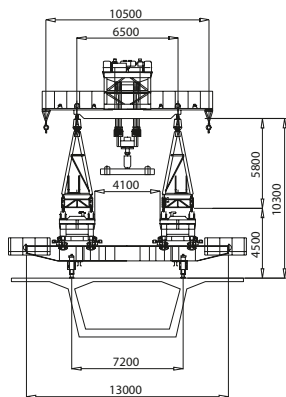
**Max span length:** 120 m  
**Lifting capacity:** 100 ton  
**Total weight of the equipment:** 390 ton

### MAIN TRUSSES

**Length:** 144 m  
**Height:** 5.80 m  
**Width:** 1.80 m  
**Distance between C/L of trusses:** 6.50 m  
**Clearance between trusses:** 4.10 m  
**Unit weight:** 0.9 ton/m x 2

### SPEEDS

**Lifting:**  
**with load:** 0.15 m/min  
**without load:** 1.5 m/min  
**Travelling:**  
**with load:** 6 m/min  
**without load:** 12 m/min



## LAUNCHING GIRDER Model LGS-80-60

### EXECUTION

**Client:** Rizzani de Eccher Spa

**Projects:** S.S. 13 Pontebbana Expressway (Italy)  
Roma – L'Aquila – Teramo Motorway (Italy)  
Ancona Urban Expressway (Italy)

**Year of manufacture:** 1988

**Number of pieces:** 1

### CHARACTERISTICS

**Max span length:** 60 m

**Winch lifting capacity:** 80 ton

**Total weight of the equipment:** 150 ton

### MAIN TRUSSES

**Length:** 84 m

**Height:** 3.55 m

**Width:** 1.05 m

**Distance between C/L of trusses:** 4.10 m

**Clearance between trusses:** 2.72 m

**Unit weight:** 0.55 ton/m x 2

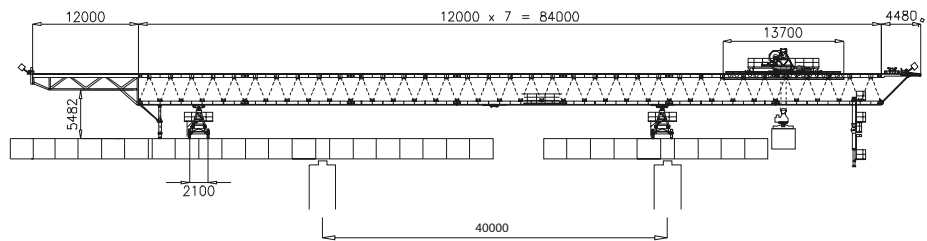
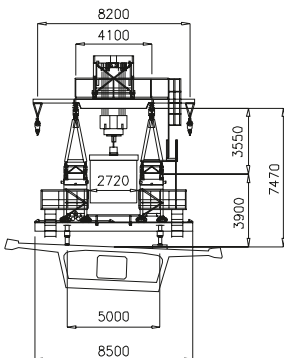
### SPEEDS

**Lifting:** 0.8 m/min

**Travelling:**

**with load** 7 m/min

**without load** 14 m/min





## LAUNCHING GIRDER Model LGS-S-SSC-0-80-100

### EXECUTION

**Client:** Hyundai  
**Project:** Chung San Bridge (Korea)  
**Year of manufacture:** 1995  
**Number of pieces:** 1

### CHARACTERISTICS

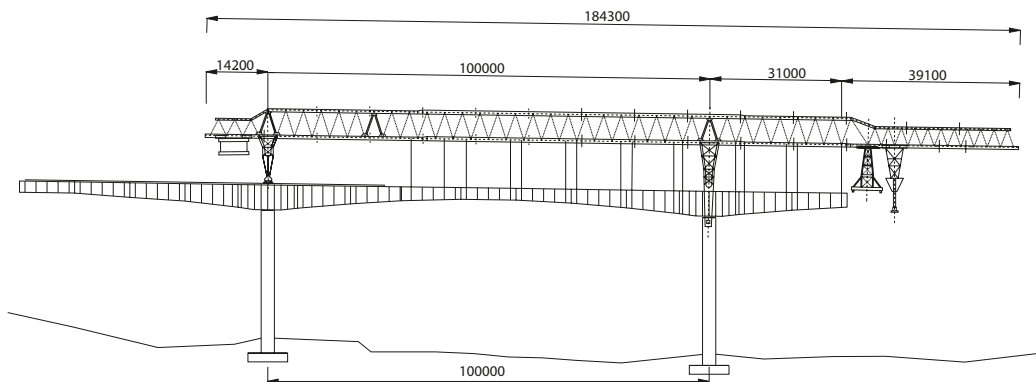
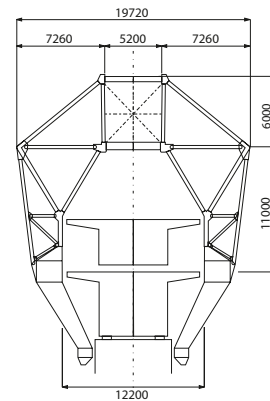
**Max span length:** 100 m  
**Winch lifting capacity:** 80 ton  
**Total weight of the equipment:** 620 ton

### MAIN TRUSSES

**Length:** 184.30 m  
**Height:** 6 m  
**Width:** 5.20 m  
**Unit weight:** 2.2 ton/m

### SPEEDS

**Lifting:** 0.9 m/min  
**Travelling:**  
**with load** 6 m/min  
**without load** 12 m/min





# 2 LAUNCHING GIRDERS FOR SPAN BY SPAN ERECTION

DEAL EQUIPMENT REPORT



## LAUNCHING GIRDER Model LGS-1200-55

### EXECUTION

**Client:** UEM

**Project:** Penang 2nd Crossing Bridge Project (Malaysia)

**Year of manufacture:** 2009

**Number of pieces:** 4

### CHARACTERISTICS

**Max span length:** 55 m

**Lifting capacity:** 1200 ton

**Max cross-fall:** 2.50%

**Max gradient:** 2.50%

**Min radius:** 2500 m

**Total weight of the equipment:** 640 ton

### MAIN TRUSSES

**Length:** 66.30 m

**Height:** 4 m

**Width:** 2 m

**Distance between suspension lines:** 8.40 m

**Unit weight:** 1.56 ton/m x 2

### SPEEDS

**Lifting:**

**with load** 0.2 ÷ 2.0 m/min

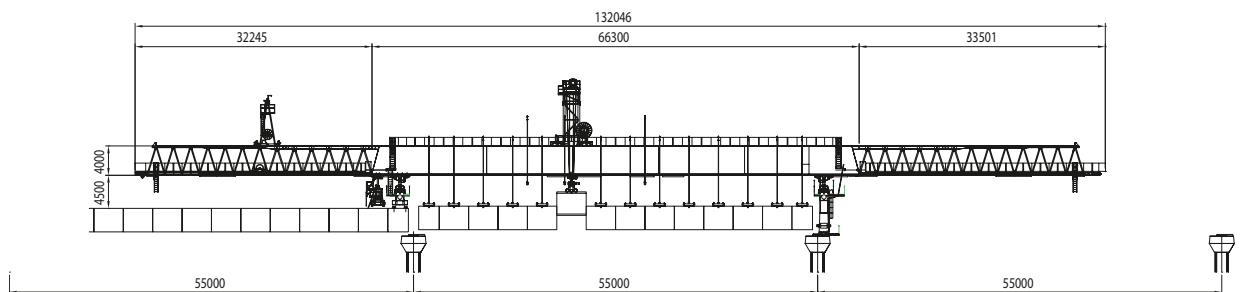
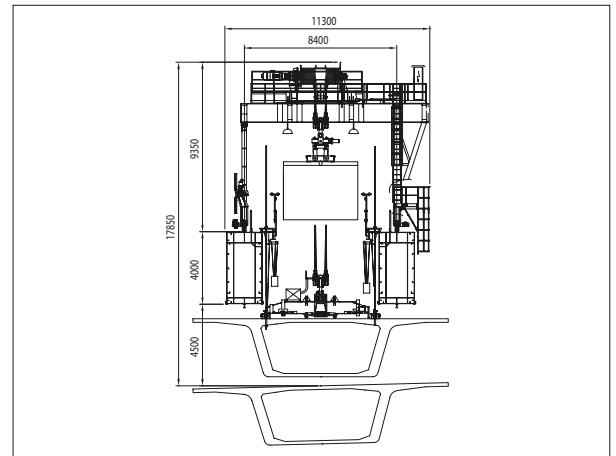
**without load** 0.2 ÷ 4.0 m/min

**Travelling:**

**with load** 0.2 ÷ 8.0 m/min

**without load** 0.2 ÷ 16.0 m/min

**Self launch:** 0.2 ÷ 5.0 m/min



## LAUNCHING GIRDER Model LGS-SS-0-750-44

### EXECUTION

**Client:** VFR Ltd VSL – Freyssinet – Rizzani de Eccher Spa a J.V.

**Project:** Dubai Metro Project – Red Line (UAE)

**Year of manufacture:** 2006

**Number of pieces:** 8

### CHARACTERISTICS

**Capacity:** 750 ton

**Max span length:** 44 m

**Winch lifting capacity:** 75 ton

**Min radius:** 300 m

**Max gradient:** 4%

**Total weight of the equipment:** 420 ton

### MAIN GIRDERS

**Length:** 97 m

**Height:** 2.65 m

**Width:** 1.20 m

**Distance between suspension lines:** 7.93 m

**Unit weight:** 1.05 ton/m x 2

### SPEEDS

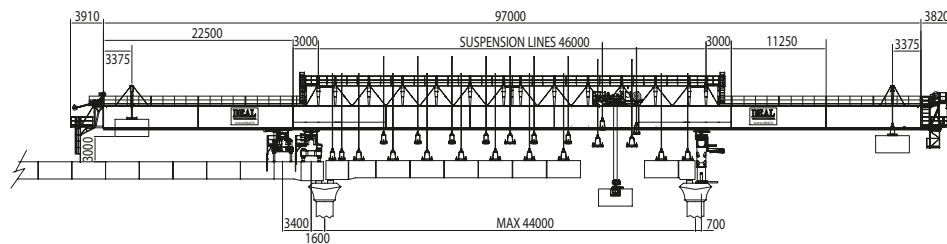
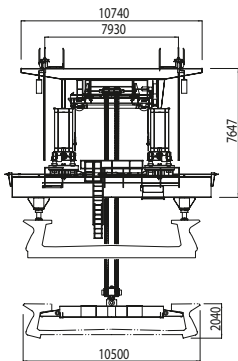
**Lifting:**

**with load** 0.2 ÷ 2.0 m/min

**without load** 0.2 ÷ 4.0 m/min

**Winch travelling:** 0.5 ÷ 10.0 m/min

**Self launch:** 0.5 ÷ 5.0 m/min



**LAUNCHING GIRDER**  
**Model LG-1300-45**  
**Span by Span Configuration**

**EXECUTION**

**Client:** Kiewit - Flatiron General Partneriat  
**Project:** Port Mann Bridge Road (Canada)  
**Year of manufacture:** 2009  
**Number of pieces:** 1

**CHARACTERISTICS**

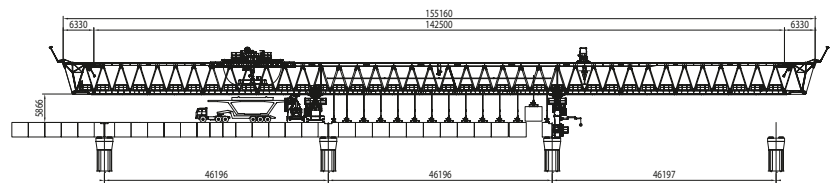
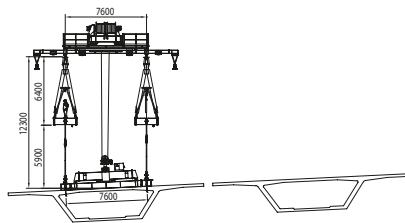
**Max span length:** 47.28 m  
**Lifting capacity:** 1300 ton  
**Max cross-fall:** ± 4.8%  
**Max gradient:** ± 4%  
**Min radius:** 500 m  
**Total weight of the equipment:** 710 ton

**MAIN TRUSSES**

**Length:** 142.50 m  
**Height:** 6.40 m  
**Centerline distance:** 7.60 m  
**Clearance between trusses:** 4.95 m

**SPEEDS**

**Lifting:** 0.4 ÷ 1.5 m/min  
**Travelling:** 1.5 ÷ 12.0 m/min  
**Self launch:**  
**truss** 1.5 ÷ 5.5 m/min  
**support** 2.5 ÷ 10.0 m/min  
**transversal movement** 0.4 ÷ 3.0 m/min



## LAUNCHING GIRDER Model LGS-SS-0-340-36

### EXECUTION

**Client:** RSL J.V. – Rizzani de Eccher Spa – SNC Lavalin Constructions (Pacific) Inc.  
**Project:** Richmond – Airport Vancouver Rapid Transit Project (British Columbia – Canada)  
**Year of manufacture:** 2006  
**Number of pieces:** 1

### CHARACTERISTICS

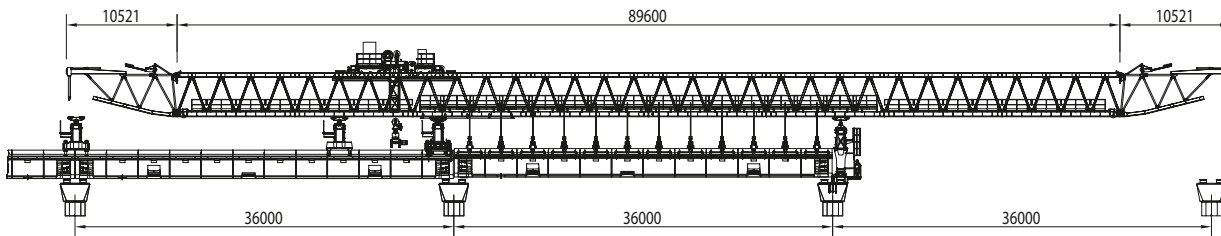
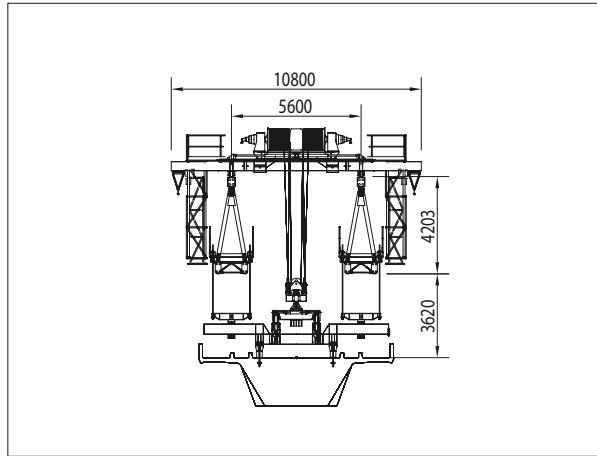
**Capacity:** 340 ton  
**Max span length:** 36 m  
**Winch lifting capacity:** 40 ton  
**Min radius:** 185 m for 32 m span  
**Max gradient:** 5%  
**Max cross fall:** 10%  
**Total weight of the equipment:** 392 ton

### MAIN TRUSSES

**Length:** 90.80 m  
**Height:** 4.20 m  
**Width:** 1.34 m  
**Distance between suspension lines:** 5.60 m  
**Unit weight:** 0.70 ton/m x 2

### SPEEDS

**Lifting:**  
**with load** 0.1 ÷ 1.4 m/min  
**without load** 0.1 ÷ 3.5 m/min  
**Winch travelling:**  
**with load** 0.2 ÷ 6.0 m/min  
**without load** 0.2 ÷ 10.0 m/min  
**Self launch:** 0.6 ÷ 6.0 m/min





## LAUNCHING GIRDER Model LGS-SS-0-185-30

### EXECUTION

**Client:** Rizzani de Eccher Spa  
**Project:** Metro Manila LRT Line 2 (Philippines)  
**Year of manufacture:** 1999  
**Number of pieces:** 2

### CHARACTERISTICS

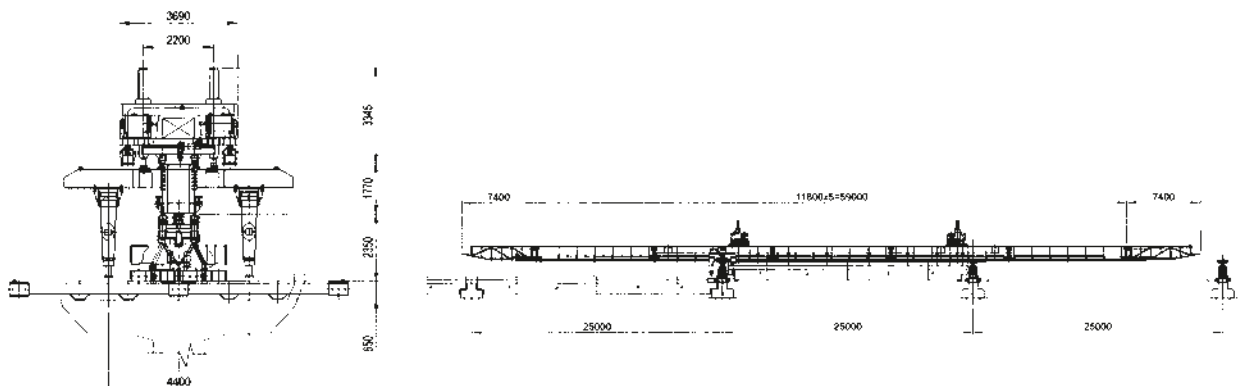
**Capacity:** 185 ton  
**Max span length:** 30 m  
**Winch lifting capacity:** 30 ton x 2  
**Min radius:** 175 m  
**Total weight of the equipment:** 130 ton

### MAIN GIRDERS

**Length:** 59 m  
**Height:** 1.77 m  
**Width:** 1.12 m  
**Distance between suspension lines:** 1.26 m  
**Unit weight:** 0.88 ton/m

### SPEEDS

**Lifting:**  
**with load** 0.1 ÷ 1.4 m/min  
**without load** 0.1 ÷ 5.4 m/min  
**Travelling:** 0.2 ÷ 10.0 m/min



## LAUNCHING GIRDER Model LGS-SS-0-340-40

### EXECUTION

**Client:** Gammon – Rizzani de Eccher a J.V.  
**Project:** Singapore LRT Bukit Panjang Line (Singapore)  
**Year of manufacture:** 1997  
**Number of pieces:** 2

### CHARACTERISTICS

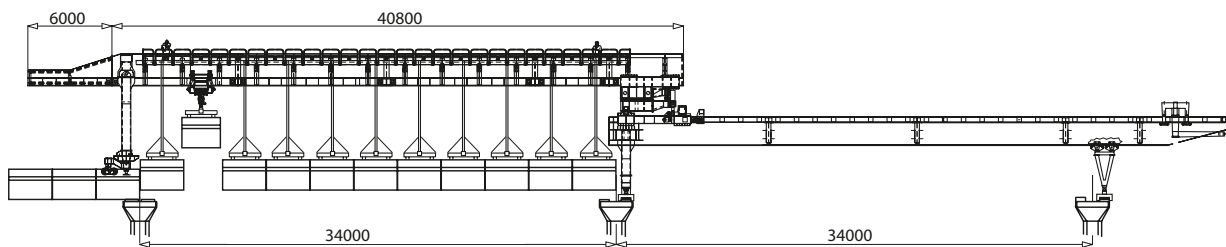
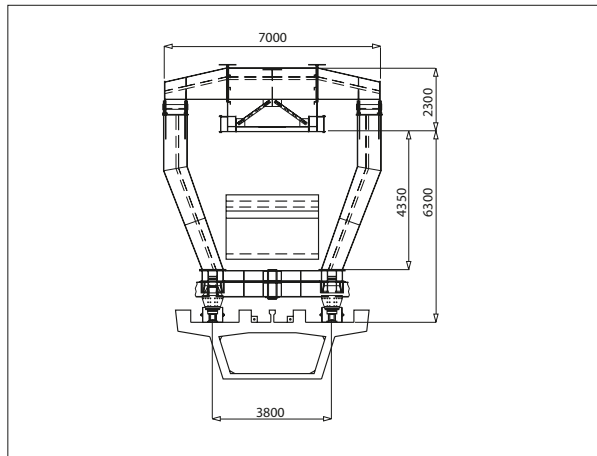
**Capacity:** 340 ton  
**Max span length:** 40 m  
**Winch lifting capacity:** 40 ton  
**Min radius:** 60 m  
**Total weight of the equipment:** 228 ton

### MAIN DIMENSIONS

**Main girder length:** 46.80 m  
**Support girder length:** 41.40 m  
**Weight of main girder:** 132 ton  
**Weight of support girder:** 96 ton  
**Total weight:** 228 ton

### SPEEDS

**Lifting:** 0.3 ÷ 1.8 m/min  
**Travelling:** 0.5 ÷ 9.0 m/min



## LAUNCHING GIRDER Model LGS-SS-U-1040-46

### EXECUTION

**Client:** PCL Civil Constructors, Inc.  
**Project:** Ernest F. Lyons Bridge Replacement (Florida - USA)  
**Year of manufacture:** 2005  
**Number of pieces:** 1

### CHARACTERISTICS

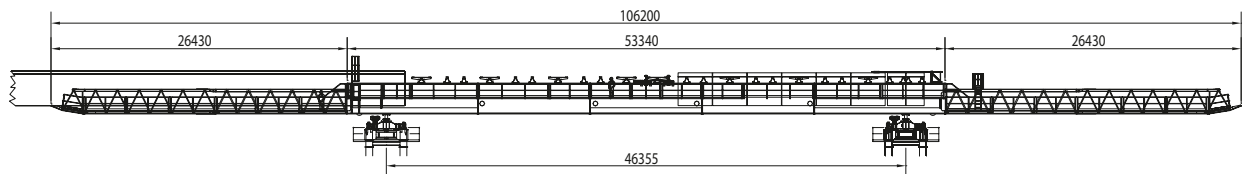
**Capacity:** 1040 ton  
**Max span length:** 46.40 m  
**Max segment weight:** 77 ton  
**Max gradient:** 3.50%  
**Total weight of the equipment:** 338 ton

### MAIN GIRDERS

**Length:** 53.34 m  
**Height:** 2.69 m  
**Width:** 1.58 m  
**Unit weight:** 1.70 ton/m x 2

### SPEEDS

**Self launch:** 4 m/min  
**Manipulators:** 0.7 ÷ 8.0 m/min



## LAUNCHING GIRDER Model LGS-SS-U-1135-46

### EXECUTION

**Client:** Edward Kraemer & Sons, Inc.

**Project:** Susquehanna River Bridge (Pennsylvania – USA)

**Year of manufacture:** 2005

**Number of pieces:** 1

### CHARACTERISTICS

**Capacity:** 1138 ton

**Max span length:** 46.30 m

**Max segment weight:** 95 ton

**Max gradient:** 2%

**Max cross fall:** 8%

**Total weight of equipment:** 310 ton

### MAIN TRUSSES

**Length:** 47.64 m

**Height:** 4.69 m

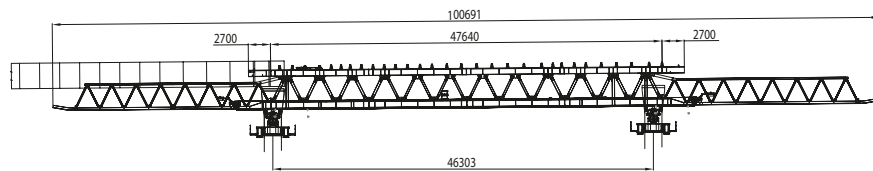
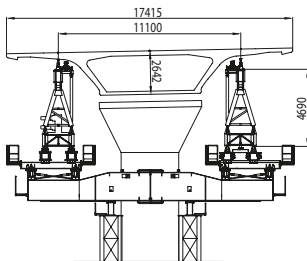
**Width:** 1.94 m

**Unit weight:** 1.7 ton/m x 2

### SPEEDS

**Self launch:** 4 m/min

**Manipulators:** 0.7 ÷ 6.0 m/min



## LAUNCHING GIRDER Model LGS-SS-U-1150-45

### EXECUTION

**Client:** George Harms Construction Co., Inc.

**Project:** Victory Bridge (New Jersey – USA)

**Year of manufacture:** 2003

**Number of pieces:** 1

### CHARACTERISTICS

**Max span length:** 46 m

**Capacity:** 1160 ton

**Min radius:** 1.900 m

**Total weight of the equipment:** 290 ton

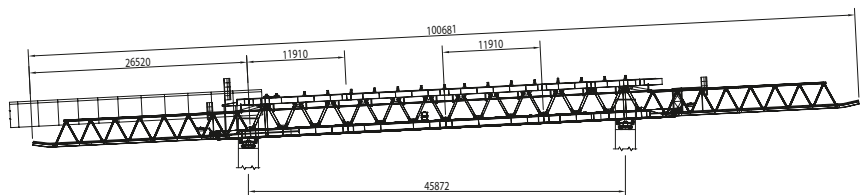
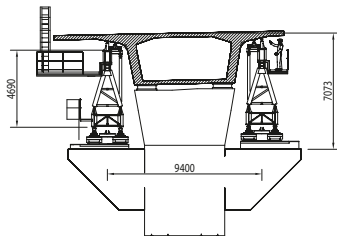
### MAIN TRUSSES

**Length:** 47.64 m

**Height:** 4.66 m

**Width:** 1.60 m

**Unit weight:** 1.6 ton/m x 2





## LAUNCHING GIRDER Model LGS-SS-U-2500-60

### EXECUTION

**Client:** LG Construction  
**Project:** Seo Hae Bridge (Korea)  
**Year of manufacture:** 1996  
**Number of pieces:** 1

### CHARACTERISTICS

**Max span length:** 60 m  
**Total weight of the equipment:** 980 ton

### FEEDER CRANE

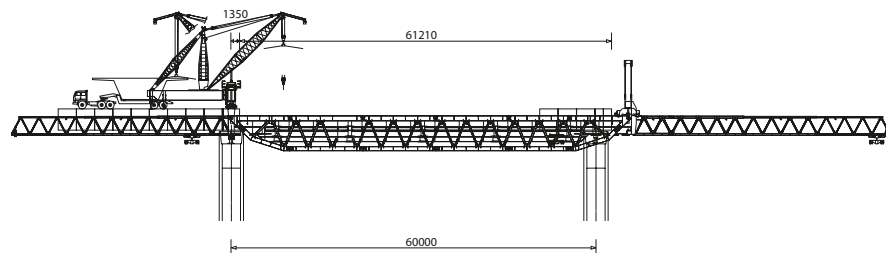
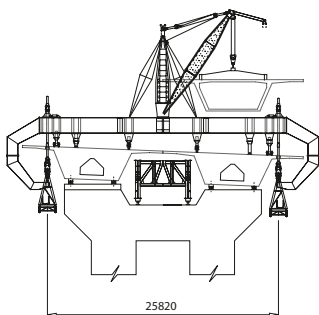
**Lifting capacity:** 80 ton  
**Lifting speed:** 1.50 m/min  
**Weight:** 50 ton

### CENTRAL BEAM

**Length:** 144.56 m  
**Height:** 3 m  
**Width:** 2 m  
**Unit weight:** 2.82 ton/m  
**Weight:** 408 ton

### SIDE BEAM

**Length:** 65.30 m  
**Height:** 6 m  
**Width:** 2 m  
**Unit weight:** 1.8 ton/m  
**Weight:** 120 ton x 2



## LAUNCHING GIRDER Model LGS-SSC-0-525-35 (60-60)

### EXECUTION

**Client:** Rizzani de Eccher Spa  
**Project:** Metro Manila LRT Line 2 (Philippines)  
**Year of manufacture:** 1999  
**Number of pieces:** 1

### CHARACTERISTICS

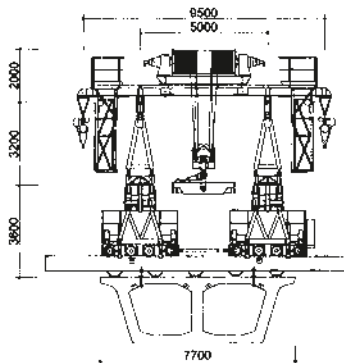
**Capacity:** 525 ton (60/60)  
**Max span length:** 35 (60) m  
**Winch lifting capacity:** 60 ton  
**Min radius:** 175 m  
**Total weight of the equipment:** 108 ton

### MAIN TRUSSES

**Length:** 81.90 m  
**Height:** 3.20 m  
**Width:** 1.10 m  
**Distance between C/L of trusses:** 5 m  
**Clearance between trusses:** 3.50 (3.86) m  
**Unit weight:** 0.66 ton/m x 2

### SPEEDS

**Lifting:**  
**with load** 1.4 m/min  
**without load** 3.5 m/min  
**Travelling:**  
**with load** 6 m/min  
**without load** 10 m/min



# LAUNCHING GIRDER

## Model LGS-SSC-O-480-37 (60-65)

### EXECUTION

**Client:** S.I.W.P. J.V.  
**Project:** Interchange 93 Northbound Boston (Massachusetts - USA)  
**Year of manufacture:** 1999  
**Number of pieces:** 1

### CHARACTERISTICS

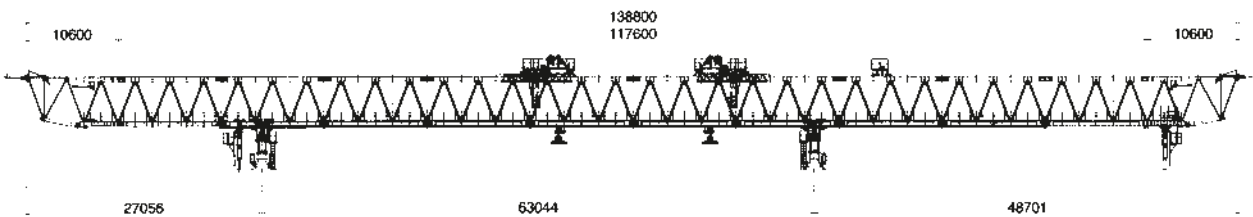
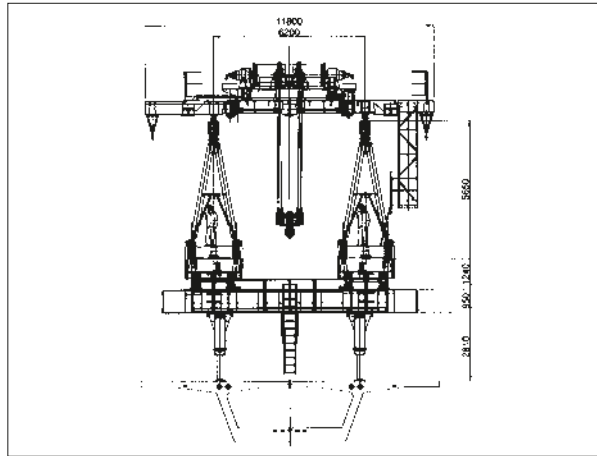
**Capacity:** 480 ton (60/65)  
**Max span length:** 37 (65) m  
**Winch lifting capacity:** 65 ton x 2  
**Total weight of the equipment:** 212 ton

### MAIN TRUSS

**Length:** 117.60 m  
**Height:** 5.65 m  
**Width:** 2.05 m  
**Distance between C/L of trusses:** 6.20 m  
**Clearance between trusses:** 4.15 m  
**Unit weight:** 1 ton/m x 2

### SPEEDS

**Lifting:**  
**with load** 0.1 ÷ 1.0 m/min  
**without load** 0.1 ÷ 3.0 m/min  
**Travelling:**  
**with load** 0.5 ÷ 10.0 m/min  
**without load** 1 ÷ 12.0 m/min





## LAUNCHING GIRDER Model LGS-SSC-0-460-36-(60-50)

### EXECUTION

**Client:** NECSO Redondo  
**Project:** Tren Urbano Light Rail Transport San Juan (Puertorico)  
**Year of manufacture:** 1999  
**Number of pieces:** 1

### CHARACTERISTICS

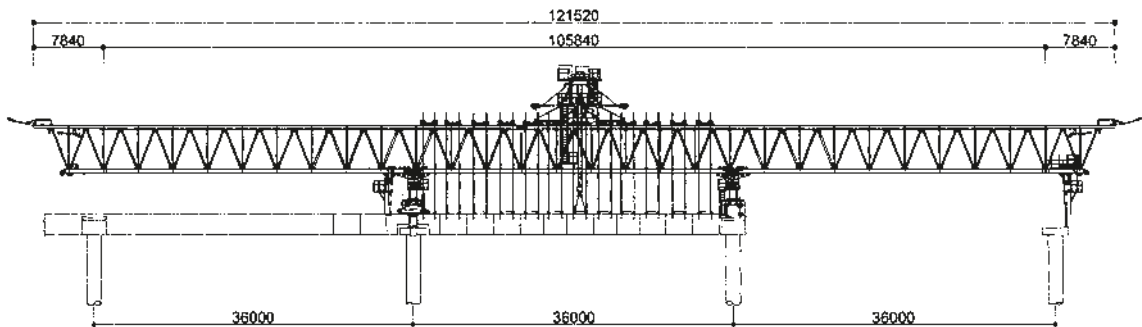
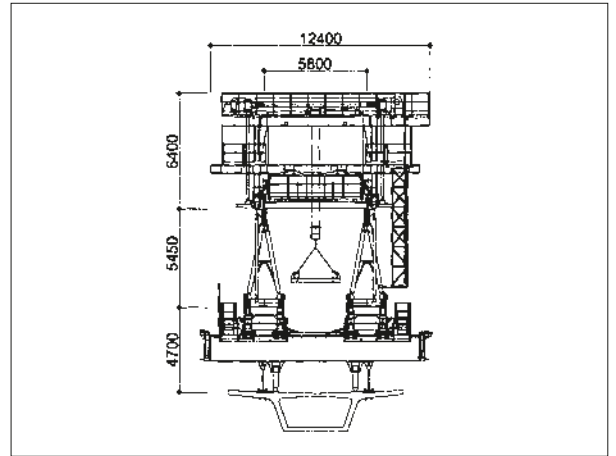
**Capacity:** 460 ton (60/50)  
**Max span length:** 36 (50) m  
**Winch lifting capacity:** 55 ton x 2  
**Total weight of the equipment:** 400 ton

### MAIN TRUSSES

**Length:** 105.84 m  
**Height:** 5.45 m  
**Width:** 2.04 m  
**Distance between C/L of trusses:** 5.80 m  
**Distance between suspension lines:** 2 m  
**Clearance between trusses:** 3.76 m  
**Unit weight:** 0.9 ton/m x 2

### SPEEDS

**Lifting speed variable:**  
**with load** 1.5 m/min  
**without load** 4.5 m/min  
**Travelling:** 0.2 ÷ 14.0 m/min



## LAUNCHING GIRDER Model LGS-SS-U-300-30

### EXECUTION

**Client:** Freyssinet Middle East

**Project:** Al Safouh Transit System (UAE)

**Year of manufacture:** 2008

**Number of pieces:** 1

### CHARACTERISTICS

**Max span length:** 30 m

**Lifting capacity:** 300 ton

**Max segment weight:** 33 ton

**Max cross-fall:** 4%

**Total weight of the equipment:** 186 ton

### MAIN TRUSSES

**Length:** 40.40 m

**Height:** 2.20 m

**Width:** 1 m

**Unit weight:** 0.74 ton/m x 2

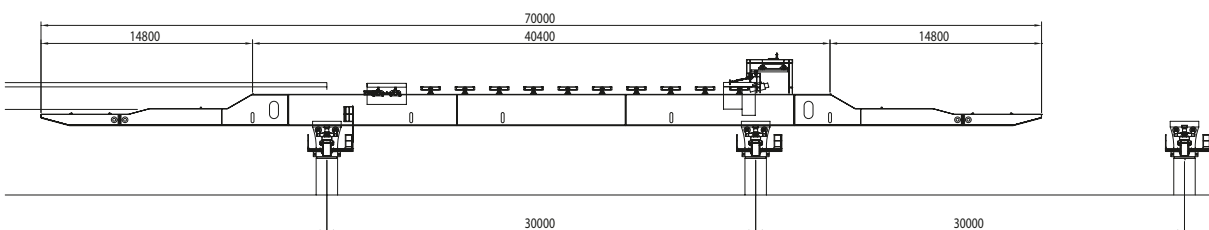
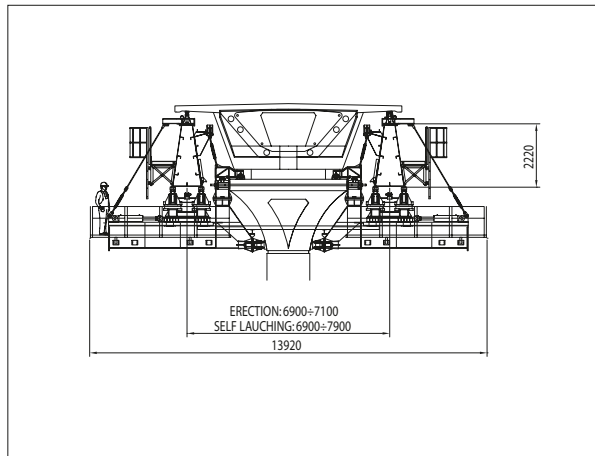
### SPEEDS

**Transport trolley:**

**with load** 0.0 ÷ 6.0 m/min

**without load** 0.0 ÷ 12.0 m/min

**Self launch:** 0.0 ÷ 2.0 m/min



# 3 LOADERS

DEAL EQUIPMENT REPORT



## SEGMENTS LOADER Model SL-95

### EXECUTION

**Client:** Edward Kraemer & Sons, Inc.

**Project:** Susquehanna River Bridge (Pennsylvania - USA)

**Year of manufacture:** 2005

**Number of pieces:** 1

### CHARACTERISTICS

**Lifting capacity:** 95 ton

**Max cross fall:** 8%

**Total weight of the equipment:** 108 ton

### MAIN DIMENSIONS

**Length:** 23.38 m

**Height:** 10 m

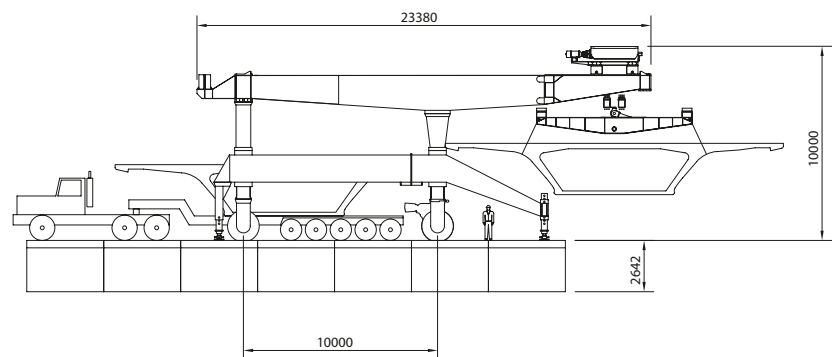
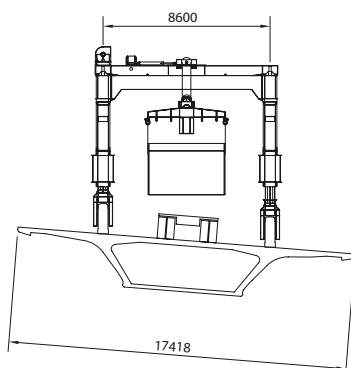
**Width:** 9.58 m

### SPEEDS

**Lifting:** 0.76 m/min

**Loader travelling:** 2.5 ÷ 10.0 m/min

**Trolley travelling:** 2.5 ÷ 5.0 m/min





# 4 LIFTING FRAMES

DEAL EQUIPMENT REPORT





## DECK GANTRY CRANE Model LF-BC-100

### EXECUTION

**Client:** Golden Crossing J.V.  
**Project:** Golden Crossing Bridge (Canada)  
**Year of manufacture:** 2007  
**Number of pieces:** 2

### CHARACTERISTICS

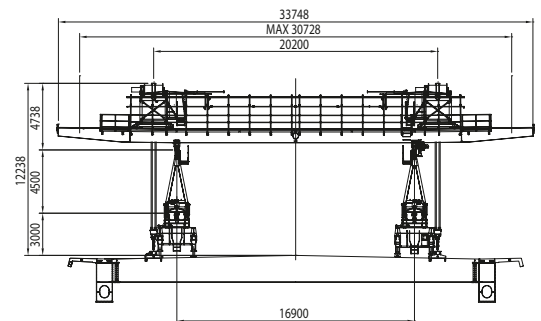
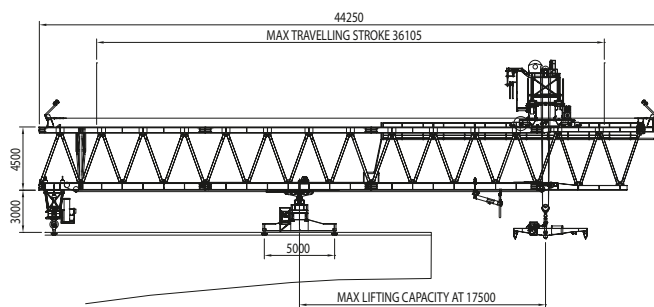
**Carrying/lifting capacity:** 100 ton  
**Gauge:** 16.9 m  
**Transversal adjustment:**  $\pm 15.1$  m  
**Max cross-fall:**  $\pm 3.2\%$   
**Max gradient:**  $\pm 5\%$   
**Min radius:** 1000 m  
**Total weight of the equipment:** 133 ton

### MAIN DIMENSIONS

**Overall length:** 44.25 m  
**Overall height:** 12.24 m  
**Overall width:** 33.75 m  
**Max height to the hook:** 43 m

### SPEEDS

**Lifting:**  
**with load** 0.0 ÷ 2.0 m/min  
**without load** 0.0 ÷ 3.5 m/min  
**Travelling:** 2.0 ÷ 4.0 m/min  
**Self launch:** 3.0 m/min



## LIFTING FRAME Model LC-BC-80

### EXECUTION

**Client:** Bilfinger & Berger

**Project:** Lagos Osborne Bridge Project (Nigeria)

**Year of manufacture:** 2009

**Number of pieces:** 2

### CHARACTERISTICS

**Carrying/lifting capacity:** 80 ton

**Gauge:** 3.60 m

**Span:** 3.188 m

**Max cross-fall:**  $\pm 2.5\%$

**Max gradient:**  $\pm 4\%$

**Min radius:** 100 m

**Total weight of the equipment:** 41 ton

### MAIN DIMENSIONS

**Overall length:** 12.55 m

**Overall height:** 6.20 m

**Overall width:** 7.30 m

**Max height to the hook:** 25 m

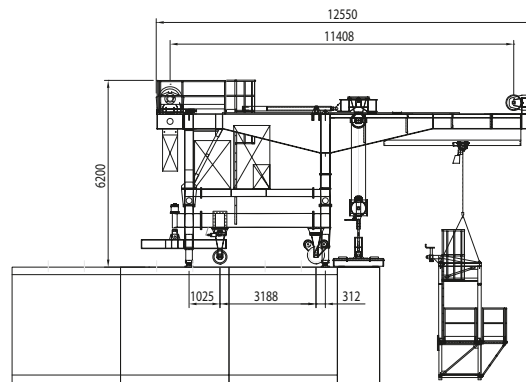
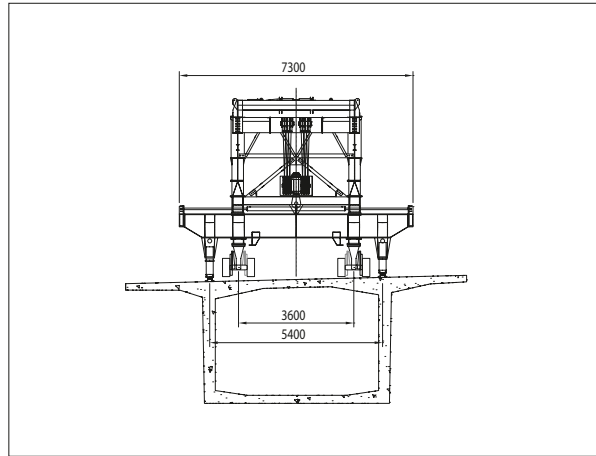
### SPEEDS

**Lifting:**

**with load** 0.375 ÷ 0.75 m/min

**without load** 0.75 ÷ 1.5 m/min

**Travelling:** 0.65 ÷ 4.09 m/min



## LAUNCHING CARRIER Model LC-BC-70

### EXECUTION

**Client:** Rizzani de Eccher Spa – Zachry J.V.  
**Project:** Dallas High Five Interchange (Texas – USA)  
**Year of manufacture:** 2002  
**Number of pieces:** 1

### CHARACTERISTICS

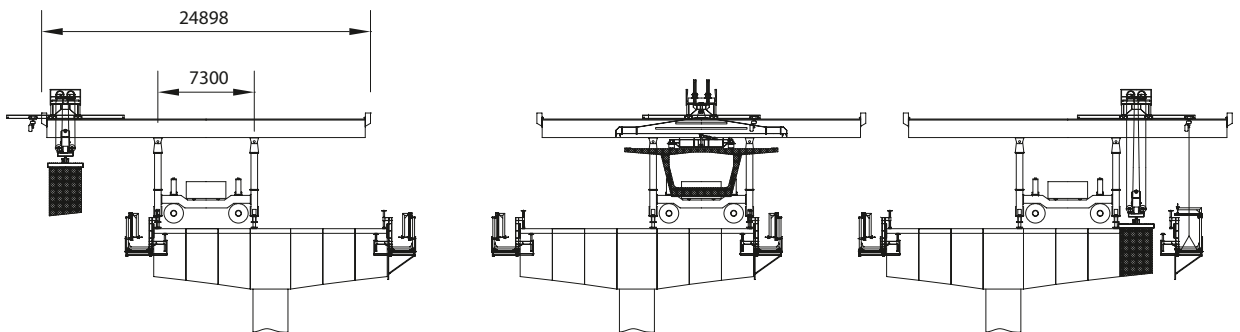
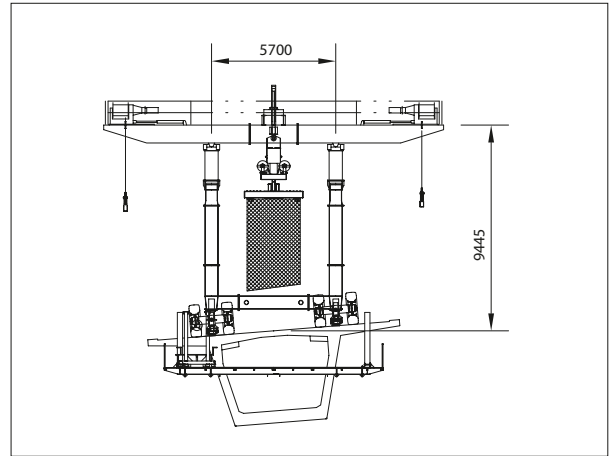
**Carrying/lifting capacity:** 63.50 ton  
**Gauge:** 5.70 m  
**Max cross fall:** 8%  
**Total weight of the equipment:** 90 ton

### MAIN DIMENSIONS

**Overall length:** 29.60 m  
**Overall height:** 11.30 m  
**Overall width:** 15.60 m  
**Max height to the hook:** 44.20 m

### SPEEDS

**Lifting:** 0.2 ÷ 1.5 m/min  
**Carrier travelling:** 0.2 ÷ 12.2 m/min  
**Overhead crane travelling:** 0.2 ÷ 9.1 m/min



## LIFTING FRAME Model LC-BC-53

### EXECUTION

**Client:** Rizzani de Eccher USA Ltd

**Project:** MIC Miami Intermodal Centre (Florida - USA)

**Year of manufacture:** 2009

**Number of pieces:** 2

### CHARACTERISTICS

**Span:** 4.78 m

**Gauge:** 4.866 m

**Lifting capacity:** 53 ton

**Max cross-fall:**  $\pm 0\%$

**Max gradient:**  $\pm 2\%$

**Min radius:** 100 m

**Total weight of the equipment:** 43 ton

**Length:** 12.63 m

**Height:** 6.679 m

**Lifting winch stroke:** 25 m

### SPEEDS

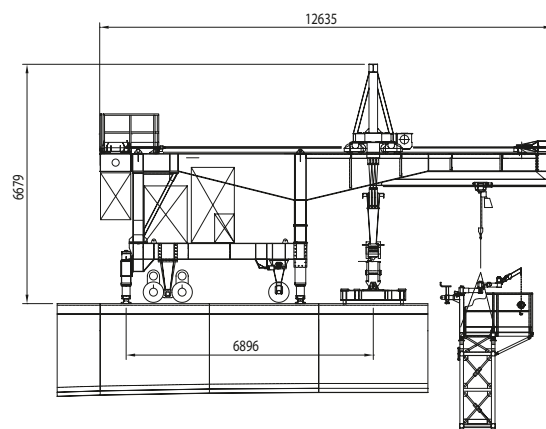
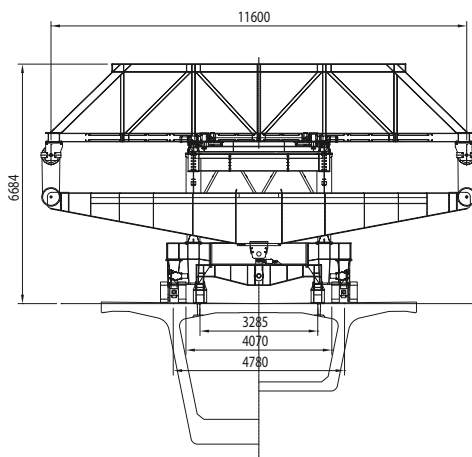
**Lifting:**

**with load** 0.375 ÷ 0.75 m/min

**without load** 0.75 ÷ 1.5 m/min

**Travelling:** 0.76 ÷ 4.75 m/min

**Winch trolley speed:** 0.82 m/min



# 5 LAUNCHING GIRDERS FOR FULL SPAN ERECTION

DEAL EQUIPMENT REPORT



## LAUNCHING GIRDER Model LGB-1600-50

### EXECUTION

**Client:** China Railways Erju Co. Ltd  
**Project:** Hangzhou Bay Bridge (China)  
**Year of manufacture:** 2005  
**Number of pieces:** 1

### CHARACTERISTICS

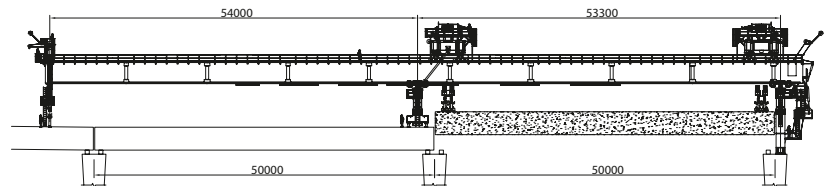
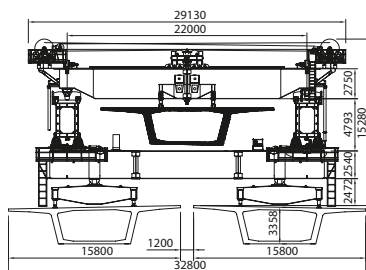
**Capacity:** 1600 ton  
**Max span length:** 50 m  
**Winch lifting capacity:** 800 ton x 2  
**Total weight of the equipment:** 1268 ton

### MAIN GIRDERS

**Length:** 111.216 m  
**Height:** 3.20 m  
**Width:** 2.20 m  
**Distance between C/L of trusses:** 22 m  
**Clearance between girders:** 19.80 m  
**Unit weight:** 4.3 ton/m x 2

### SPEEDS

**Lifting:**  
**with load** 0.1 ÷ 0.36 m/min  
**without load** 0.1 ÷ 0.72 m/min







# 6 STRADDLE CARRIER SYSTEMS FOR FULL SPAN ERECTION

DEAL EQUIPMENT REPORT



## LAUNCHING CARRIER Model LC-775-30

### EXECUTION

**Client:** VSL – Rizzani de Eccher J.V. Ltd  
**Project:** High Speed Rail Project, Taipei-Kaohsiung (Taiwan)  
**Year of manufacture:** 2001  
**Number of pieces:** 2

### CHARACTERISTICS

**Carrying/lifting capacity:** 775 ton  
**Girder span length:** 44.20 m  
**Gauge:** 5.60 m  
**Longitudinal clearance between wheels:** 32 m  
**Total weight of the equipment:**  
 carrier 375 ton  
 support girder 265 ton

### MAIN DIMENSIONS

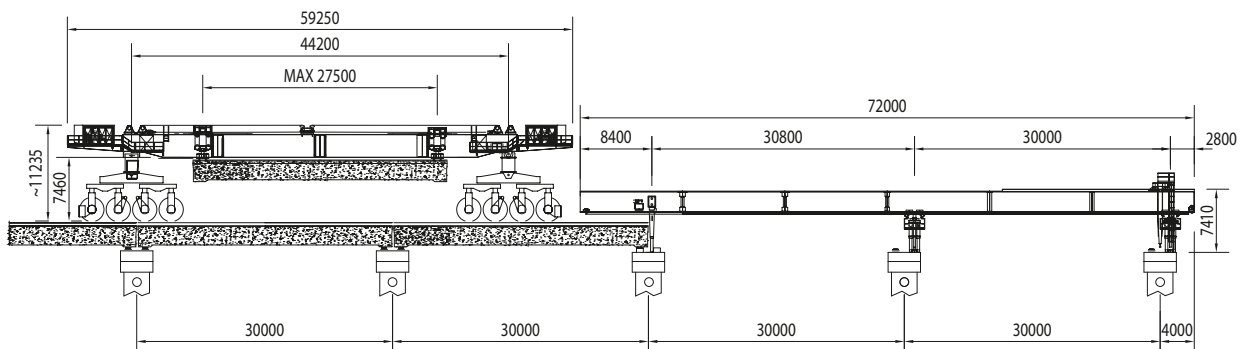
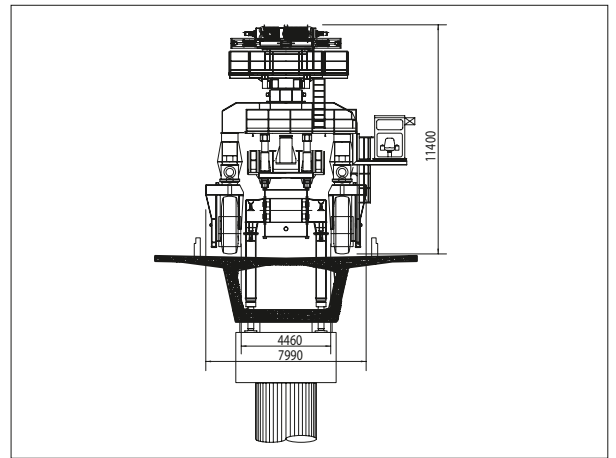
**Length:** 59.16 m  
**Height:** 11.20 m  
**Width:** 8 m  
**Height to the hook:** 8 m

### SPEEDS

**Lifting:** 0.1 ÷ 0.5 m/min  
**Carrier travelling:**  
 with load (3% gradient) 0.2 ÷ 50.0 m/min  
 with load (1.5% gradient) 0.2 ÷ 67.0 m/min  
 without load 0.2 ÷ 167.0 m/min

### STEERING

**Min radius on wheels:** 250 m  
**Min radius on bearing tower:** 0 m (90°)



## LAUNCHING CARRIER Model LC-740-31.5

### EXECUTION

**Client:** Impresa Pizzarotti & C. Spa  
**Project:** Modena Viaduct - High Speed Railway  
 Milano-Bologna (Italy)  
**Year of manufacture:** 2001  
**Number of pieces:** 2

### CHARACTERISTICS

**Carrying capacity:** 740 ton  
**Girder span length:** 45 m  
**Gauge:** 3.85 m  
**Longitudinal clearance between wheels:** 33.60 m  
**Total weight of the equipment:**  
 carrier 325 ton  
 support girder 220 ton

### MAIN DIMENSIONS

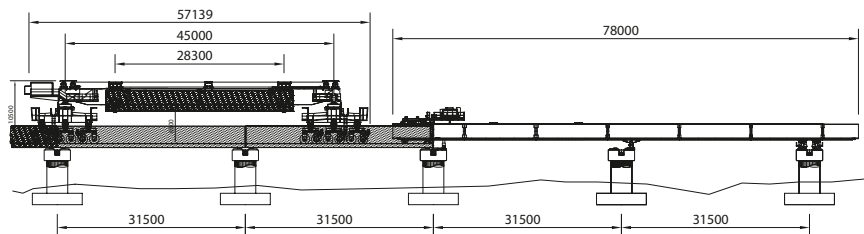
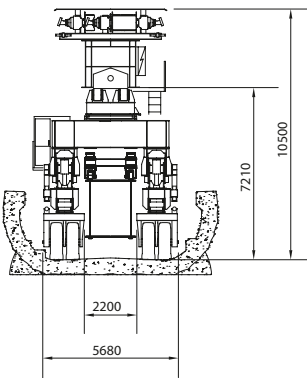
**Overall length:** 57.20 m  
**Overall height:** 10.50 m  
**Overall width:** 5.68 m  
**Total weight:** 325 + 220 ton  
**Height to the hook:** 7 m

### SPEEDS

**Lifting:**  
 with load 0.2 ÷ 0.8 m/min  
 without load 0.2 ÷ 1.6 m/min  
**Carrier travelling:** 50.0 ÷ 100.0 m/min

### STEERING

**Min radius on wheels:** 125 m  
**Min radius on bearing tower:** 0 m (90°)



# 7 MOVABLE SCAFFOLDING SYSTEMS

DEAL EQUIPMENT REPORT



## MOVABLE SCAFFOLDING Model MSS-2x20-12.1

### EXECUTION

**Client:** Consorzio Generoso Cossi Costruzioni Spa –  
M. Boni & E. Foglia S.A.

**Project:** Cantine Viaduct (Switzerland)

**Year of manufacture:** 2003

**Number of pieces:** 1

### CHARACTERISTICS

**Total weight of the equipment:** 220 ton

### DIMENSIONS OF DECK

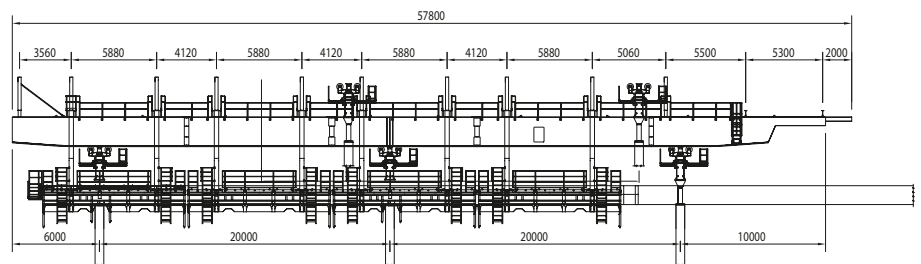
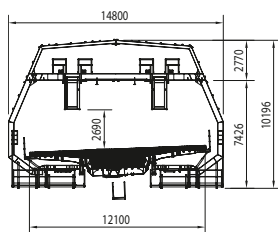
**Span length:** 20 m x 2

**Top slab width:** 12.10 m

**Bottom slab width:** 3.50 m

**Depth:** 1.30 m

**Weight:** 380 ton x 2





## MOVABLE SCAFFOLDING Model MSS-45-15.5

### CHARACTERISTICS

Span length: 45 m

Deck width: 15.50 m

Deck height: 2.50 m

Total weight of the equipment: 600 ton

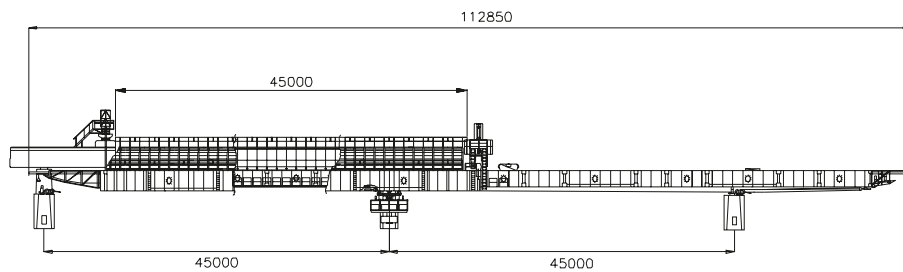
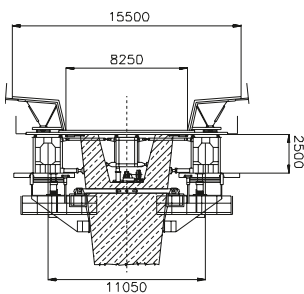
### EXECUTION

Client: Doprastav - Dobroproject

Project: Danub Bridge Bratislava (Slovakia)

Year of manufacture: 1979

Number of pieces: 1



# 8 LAUNCHING GIRDERS FOR BEAM ERECTION

DEAL EQUIPMENT REPORT



## LAUNCHING GIRDER Model LG-120-40

### EXECUTION

**Client:** Austin Bridge & Road

**Project:** IH30/PGBT Interchange Project (Texas - USA)

**Year of manufacture:** 2009

**Number of pieces:** 1

### CHARACTERISTICS

**Max span length:** 40 m

**Lifting capacity:** 60 ÷ 60 ton

**Max cross-fall:** ± 0%

**Max gradient:** ± 6%

**Total weight of the equipment:** 172 ton

### MAIN TRUSSES

**Length:** 71.40 m

**Height:** 3.32 m

**Centerline distance:** 4.40 m

**Clearance between trusses:** 3.23 m

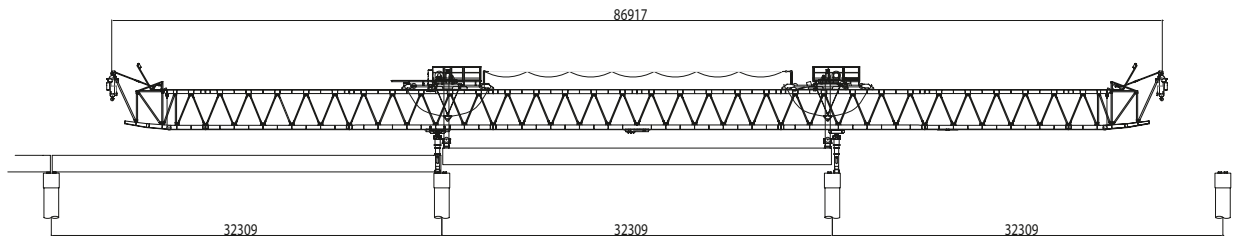
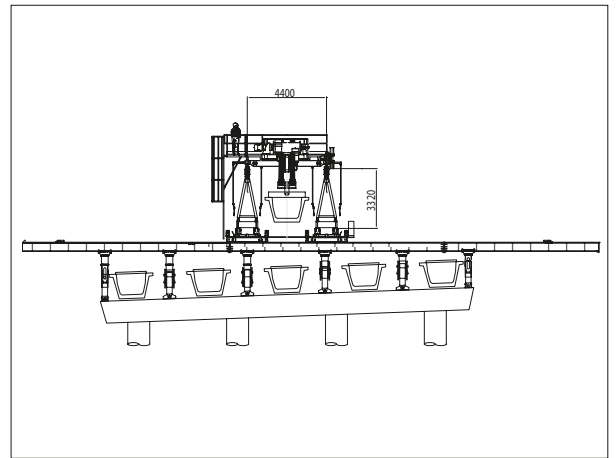
### SPEEDS

**Lifting:**

**with load** 0.8 m/min

**without load** 0.8 m/min

**Travelling:** 6.0 ÷ 12.0 m/min



## LAUNCHING GIRDER Model LG-215-40

### EXECUTION

**Client:** Freyssinet International & Cie

**Project:** Mudeirey Bridge (Lebanon)

**Year of manufacture:** 2007

**Number of pieces:** 1

### CHARACTERISTICS

**Max span length:** 40 m

**Lifting capacity:** 215 ton

**Max gradient:** 4.17%

**Total weight of the equipment:** 212 ton

### MAIN TRUSSES

**Length:** 91.20 m

**Height:** 3.55 m

**Width:** 1.05 m

**Centerline distance:** 8 m

**Clearance between trusses:** 6.73 m

**Unit weight:** 0.55 ton/m x 2

### SPEEDS

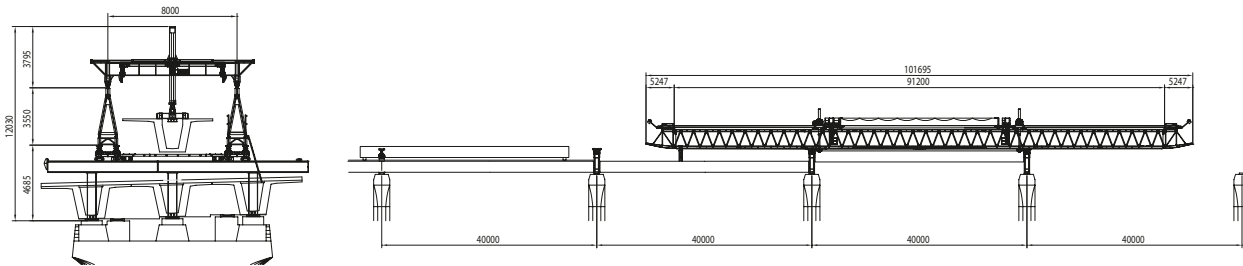
**Lifting:**

**with load** 0.3 m/min

**without load** 0.9 m/min

**Travelling:** 6.0 ÷ 12.0 m/min

**Self launch:** 6.0 m/min



## LAUNCHING GIRDER Model LGB-SS-0-70-30

### EXECUTION

**Client:** CHEC (Thai) Company Ltd  
**Project:** Southern Outer Bangkok Ring Road Project (Thailand)  
**Year of manufacture:** 2006  
**Number of pieces:** 1

### CHARACTERISTICS

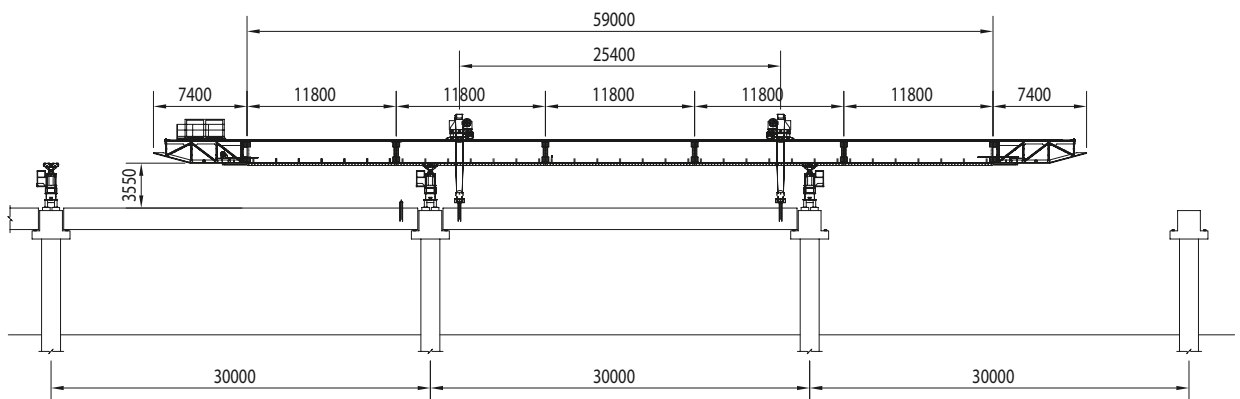
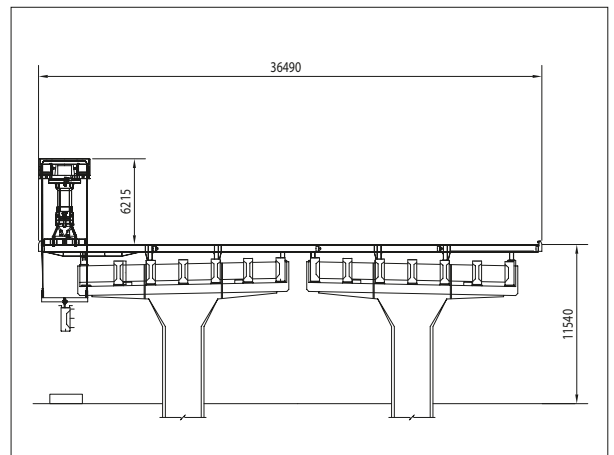
**Max span length:** 31 m  
**Winch lifting capacity:** 35 ton x 2  
**Total weight of equipment:** 98 ton (running ways excluded)

### MAIN GIRDER

**Length:** 59 m  
**Height:** 1.77 m  
**Width:** 1.12 m  
**Unit weight:** 0.85 ton/m  
**Total weight of equipment:** 98 ton (running ways excluded)

### SPEEDS

**Lifting:**  
**with load** 0.5 ÷ 2.0 m/min  
**without load** 0.5 ÷ 6.0 m/min  
**Winch travelling:** 0.3 ÷ 10.0 m/min



## LAUNCHING GIRDER Model LGB-SS-0-150-50

### EXECUTION

**Client:** VSL Korea Co.  
**Project:** No 2 Sang Pyung Bridge (Korea)  
**Year of manufacture:** 2004  
**Number of pieces:** 1

### CHARACTERISTICS

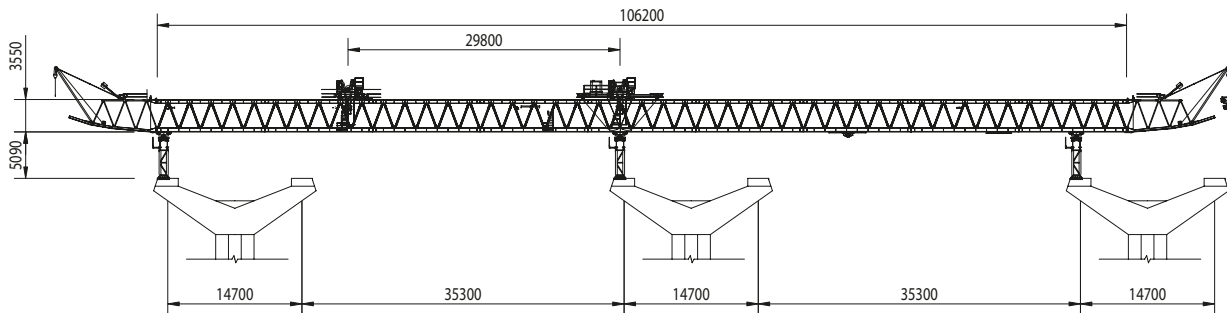
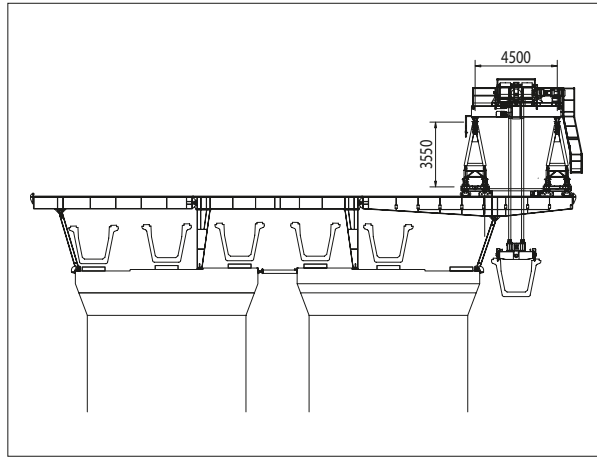
**Lifting capacity:** 75 ton x 2  
**Max span length:** 50 m  
**Total weight of the equipment:** 320 ton

### MAIN TRUSSES

**Length:** 106.20 m  
**Height:** 3.55 m  
**Width:** 1.23 m  
**Distance between C/L of trusses:** 4.50 m  
**Clearance between trusses:** 3.27 m  
**Unit weight:** 0.60 ton/m x 2

### SPEEDS

**Lifting:**  $0 \div 2$  m/min  
**Travelling:**  
**gradient 3%** 12 m/min  
**gradient 6%** 8 m/min





## SHIFTING BEAMS AND PRE-CAST SLABS GIRDER Model LGB-SS-0-80-44

### EXECUTION

**Client:** Traylor Bros, Inc.  
**Project:** Galveston Causeway Bridge (Texas – USA)  
**Year of manufacture:** 2003  
**Number of pieces:** 1

### CHARACTERISTICS

**Lifting capacity:** 80 ton  
**Span length:** 33.40 ÷ 45.40 m  
**Max gradient:** 6%  
**Total weight of the equipment:** 56 ton

### SERVICE LOADS

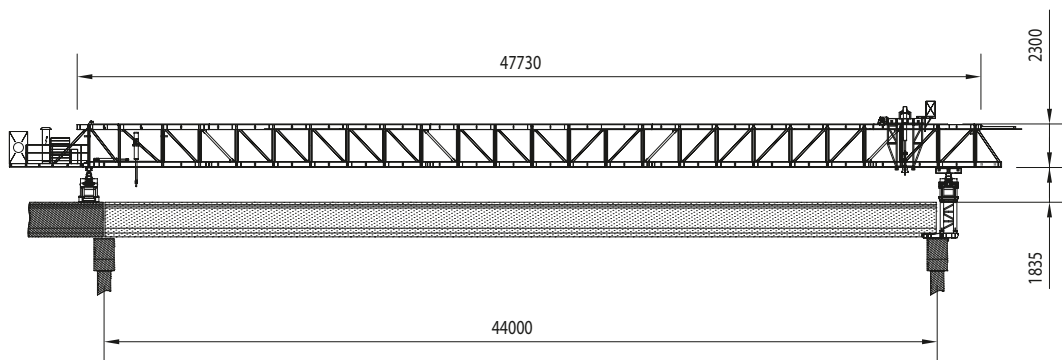
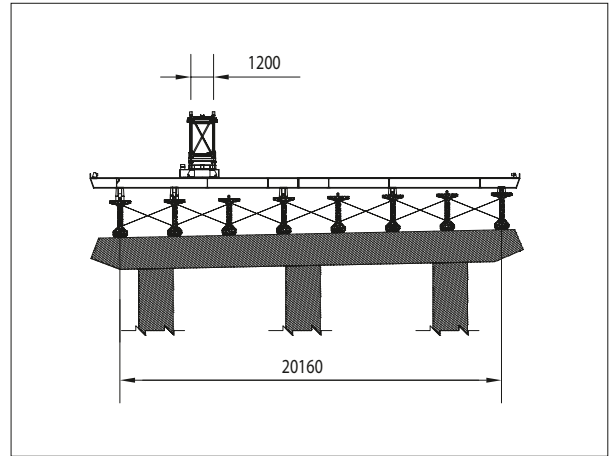
**Max weight of beams:** 80 ton  
**Max weight of pre-cast slabs:** 6.80 ton

### MAIN TRUSSES

**Length:** 47.74 m  
**Height:** 2.30 m  
**Width:** 1.20 m  
**Unit weight:** 0.6 ton/m

### SPEEDS

**Lifting of beam:** 0.3 m/min  
**Lifting of slab panel:** 1.5 m/min  
**Longitudinal travelling:** 8 m/min  
**Transversal travelling:** 8 m/min



## SHIFTING BEAMS GIRDER Model LGB-SS-45-33.6

### EXECUTION

**Client:** GLF Corporation  
**Project:** US 17 Bypass - Wilmington (North Carolina – USA)  
**Year of manufacture:** 2002  
**Number of pieces:** 1

### CHARACTERISTICS

**Span length:** 33.60 m  
**Max longitudinal slope:** 6%  
**Transversal slope:** 2%  
**Total weight of the equipment:** 31 ton

### SERVICE LOADS

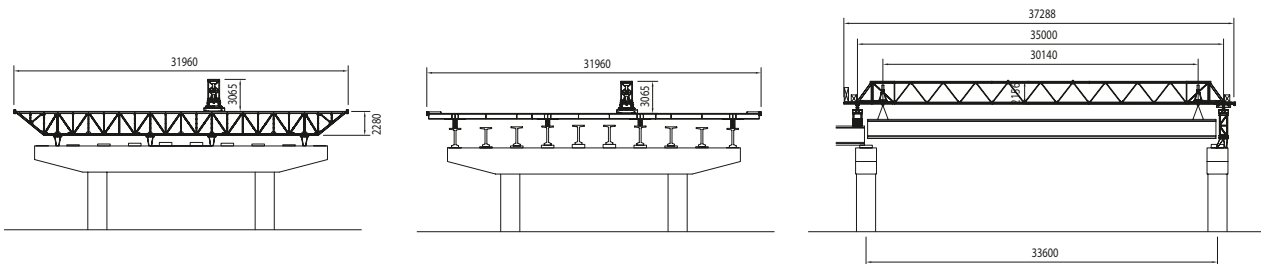
**Max weight of beams:** 76 ton  
**Max weight of pre-cast slabs:** 6.80 ton

### MAIN TRUSSES

**Length:** 37.30 m  
**Height:** 2.16 m  
**Width:** 1.21 m  
**Unit weight:** 0.20 ton/m

### SPEEDS

**Transversal travelling speed:**  
**with load** 2.2 m/min  
**without load** 4.6 m/min



## LAUNCHING GIRDER Model LGB-120-45

### EXECUTION

**Client:** Granit  
**Project:** Delcevo Bridge (Macedonia)  
**Year of manufacture:** 1995  
**Number of pieces:** 1

### CHARACTERISTICS

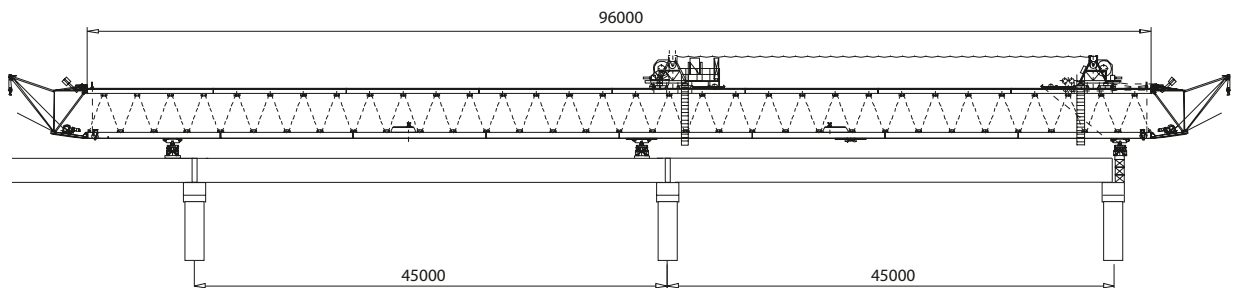
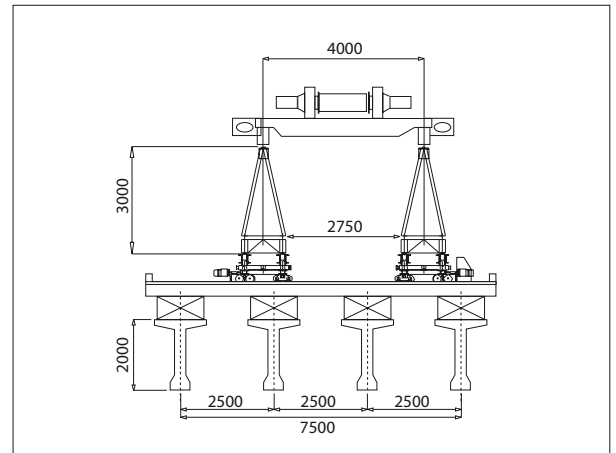
**Max span length:** 45 m  
**Winch lifting capacity:** 60 ton x 2  
**Total weight of the equipment:** 150 ton

### MAIN TRUSSES

**Length:** 96 m  
**Height:** 3 m  
**Width:** 1.15 m  
**Distance between C/L of trusses:** 4 m  
**Clearance between trusses:** 2.75 m  
**Unit weight:** 0.4 ton/m x 2

### SPEEDS

**Lifting:** 1 m/min  
**Travelling:**  
**with load** 7 m/min  
**without load** 14 m/min



## LAUNCHING GIRDER Model LGB-220-65

### EXECUTION

**Client:** Consortium Con.Tur

**Project:** Tarsus – Mersin Motorway (Turkey)

**Year of manufacture:** 1993

**Number of pieces:** 1

### CHARACTERISTICS

**Max span length:** 65 m

**Winch lifting capacity:** 110 ton x 2

**Total weight of the equipment:** 235 ton

### MAIN TRUSSES

**Length:** 134.30 m

**Height:** 4.20 m

**Width:** 1.15 m

**Distance between C/L of trusses:** 5.60 m

**Clearance between trusses:** 4 m

**Unit weight:** 0.7 ton/m x 2

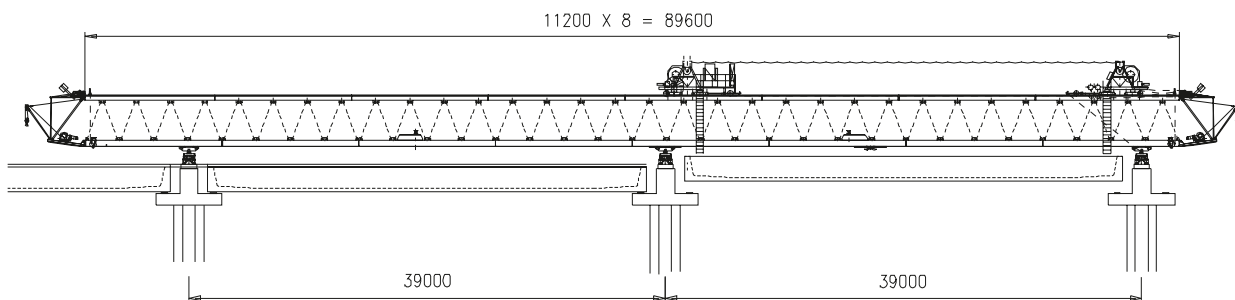
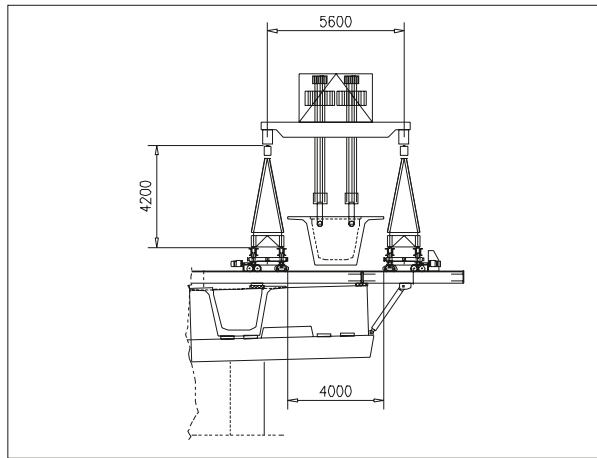
### SPEEDS

**Lifting:** 0.9 m/min

**Travelling:**

**with load** 7 m/min

**without load** 14 m/min



## LAUNCHING GIRDER Model LGS-O-20-20.5

### EXECUTION

**Client:** PKC J.V.

**Project:** Tunnel Project C11A1 Boston (Massachusetts - USA)

**Year of manufacture:** 1998

**Number of pieces:** 2

### CHARACTERISTICS

**Max span length:** 20.50 m

**Winch lifting capacity:** 10 ton x 2

**Total weight of the equipment:** 24 ton x 2

### MAIN BEAMS

**Length:** 43 m

**Height:** 0.54 m

**Width of single beam:** 0.45 m

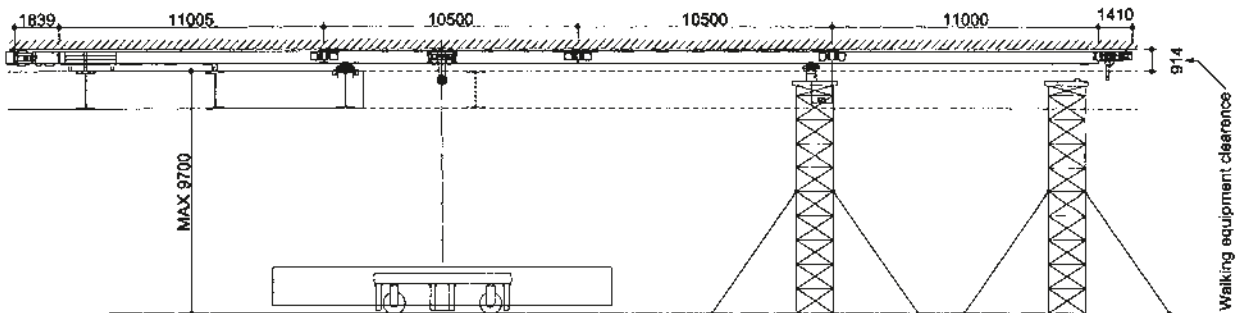
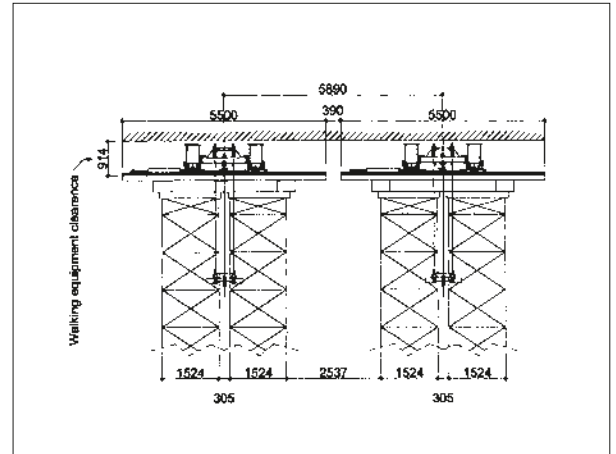
**Distance between C/L of beams:** 1.70 m

**Unit weight:** 0.2 ton/m x 2

### SPEEDS

**Lifting:** 4 m/min

**Travelling:** 10 m/min





## LAUNCHING GIRDER Model LGB-140-45

### EXECUTION

**Client:** Joannou - Paraskevaides

**Project:** Limassol – Paphos Motorway (Cyprus)

**Year of manufacture:** 1981

**Number of pieces:** 1

### CHARACTERISTICS

**Max span length:** 45 m

**Winch lifting capacity:** 70 ton x 2

**Total weight of the equipment:** 180 ton

### MAIN TRUSSES

**Length:** 97.20 m

**Height:** 2.20 m

**Width:** 0.78 m

**Unit weight:** 0.45 ton/m x 2

**Distance between C/L of trusses:** 4 m

**Clearance between trusses:** 2.92 m

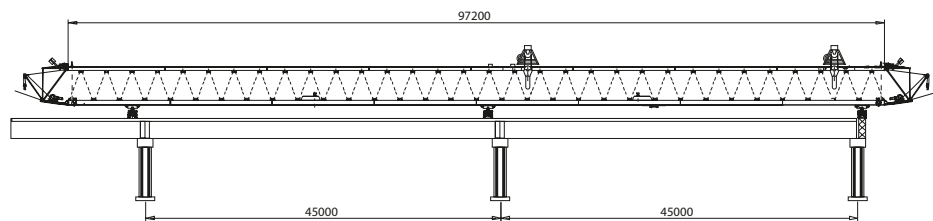
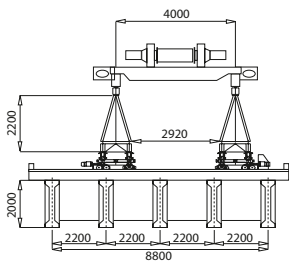
### SPEEDS

**Lifting:** 1 m/min

**Travelling:**

**with load** 7 m/min

**without load** 14 m/min



## LAUNCHING GIRDER Model Pile Driver Launching Truss

### EXECUTION

**Client:** Flatiron – United a J.V.  
**Project:** Washington Bypass (North Carolina – USA)  
**Year of manufacture:** 2007  
**Number of pieces:** 2

### CHARACTERISTICS

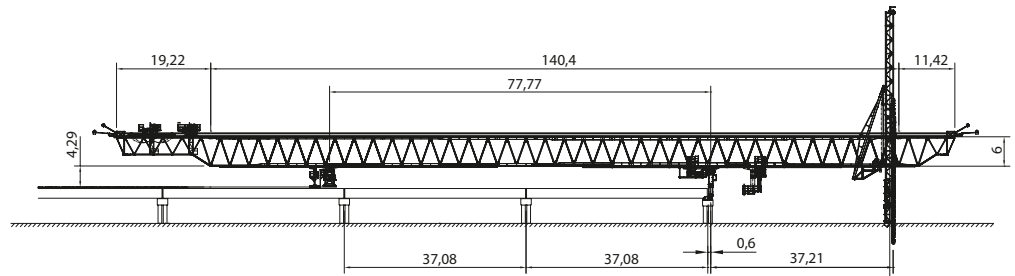
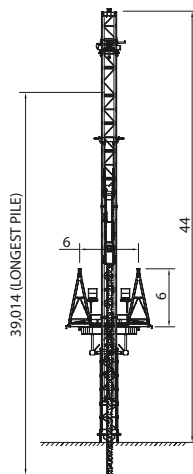
**Max span length:** 37.10 m  
**Lifting capacity:**  
 front winch 55 ton  
 rear winch 40 ton  
 service hoist 5 ton  
**Max gradient:** 6%  
**Max pile length:** 38.10 m  
**Total weight of the equipment:** 670 ton

### MAIN TRUSSES

**Length:** 140.40 m  
**Height:** 6 m  
**Width:** 2 m  
**Distance between C/L of trusses:** 6 m  
**Clearance between trusses:** 4.75 m  
**Unit weight:** 1.10 ton/m x 2  
**Max gradient:** 6%

### SPEEDS

**Lifting:** 0.2 ÷ 1.4 m/min  
**Travelling:** 0.5 ÷ 9.0 m/min  
**Self launch speed:** 0.5 ÷ 5.0 m/min







# 9 SHORT LINE MOULDS

DEAL EQUIPMENT REPORT



## MOULD Model SL-C-2.04-10.5

### EXECUTION

**Client:** VFR Ltd VSL – Freyssinet – Rizzani de Eccher Spa a J.V.

**Project:** Dubai Metro Project – Red Line (UAE)

**Year of manufacture:** 2006

**Number of pieces:** 5

### CHARACTERISTICS

**Total weight of the equipment:** 56 ton

### DIMENSIONS OF SEGMENTS

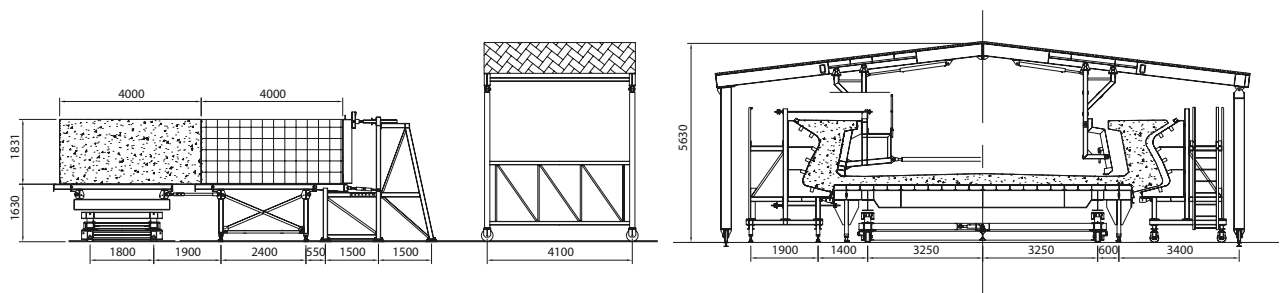
**Length:** 4 m

**Width:** 10.50 m

**Bottom width:** 3.64 m

**Depth:** 2.04 m

**Weight:** 58 ton



**MOULD**  
**Model SL-V- 5.8-10.3**

**EXECUTION**

**Client:** SNC Lavalin Serco – Rizzani de Eccher Spa a J.V.

**Project:** Vancouver Sky Train LRT Canada Line (Canada)

**Year of manufacture:** 2006

**Number of pieces:** 2

**CHARACTERISTICS**

**Total weight of the equipment:** 72.50 ton

**DIMENSIONS OF SEGMENTS**

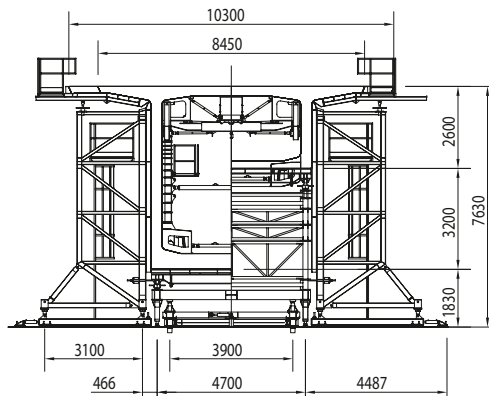
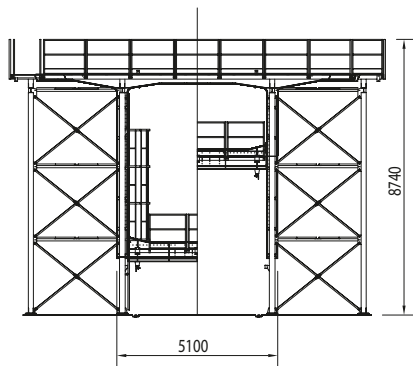
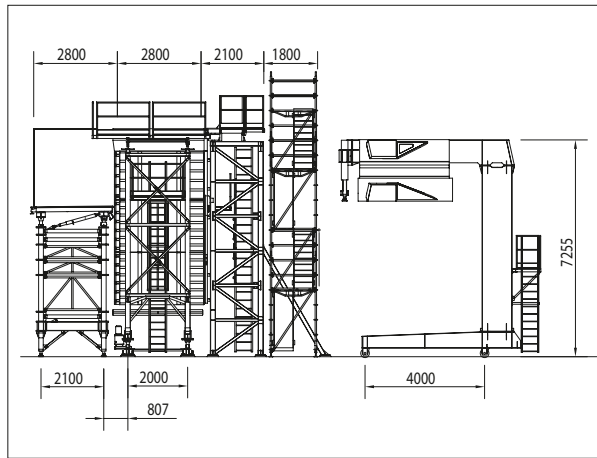
**Length:** 2.80 m

**Top slab width (variable):** 8.45 ÷ 10.30 m

**Bottom slab width:** 5.10 m

**Depth (variable):** 2.60 ÷ 5.80 m

**Weight:** 68 ÷ 44 ton



## MOULD Model SL-V-4.96-17.9

### EXECUTION

**Client:** Kiewit - Flatiron General Partneriat

**Project:** Port Mann Bridge Road (Canada)

**Year of manufacture:** 2009

**Number of pieces:** 2

### CHARACTERISTICS

**Total weight of the equipment:** 112 ton

### DIMENSIONS OF SEGMENTS

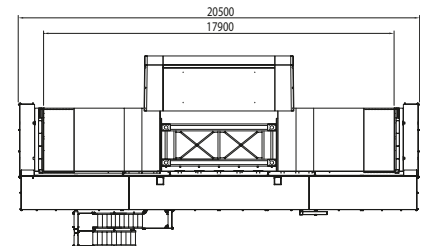
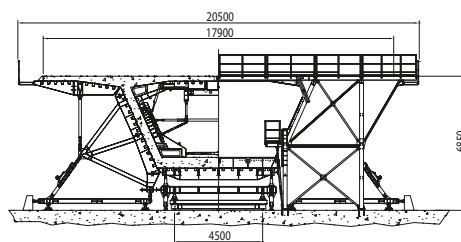
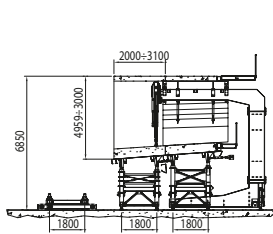
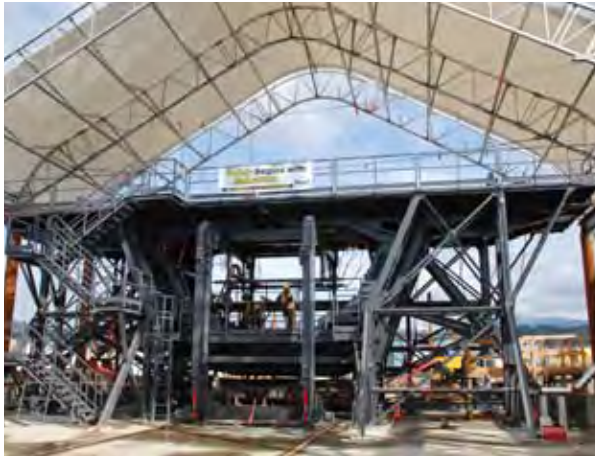
**Length:** 2.0 ÷ 3.10 m

**Depth:** 3.0 ÷ 4.959 m

**Top slab width:** 17.90 m

**Bottom slab width:** 6.10 m

**Max weight:** 84 ton



**MOULD**  
**Model SL-C-3.4-10.3**

**EXECUTION**

**Client:** SNC Lavalin Inc.

**Project:** Vancouver Sky Train LRT Canada Line (Canada)

**Year of manufacture:** 2006

**Number of pieces:** 1

**CHARACTERISTICS**

**Total weight of the equipment:** 52 ton

**DIMENSIONS OF SEGMENTS**

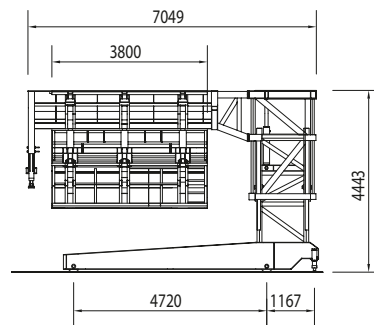
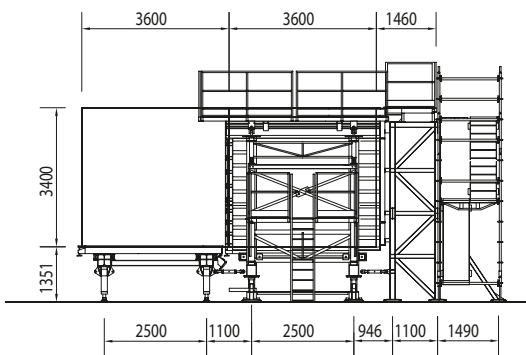
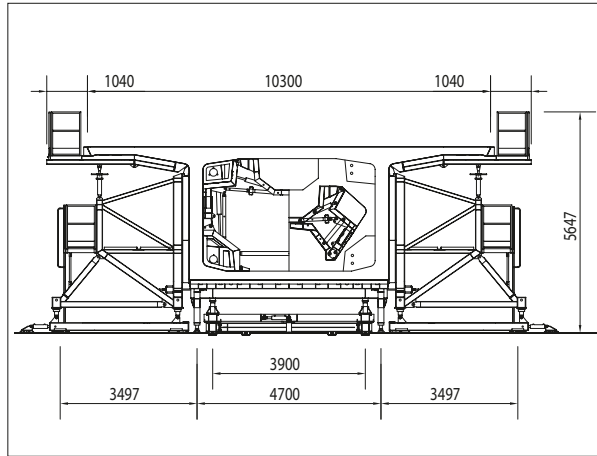
**Length:** 3.60 m

**Top slab width:** 10.30 m

**Bottom slab width:** 5.10 m

**Depth:** 3.40 m

**Weight:** 65 ton



**MOULD**  
**Model SL-C-2.1-4.2**

**CHARACTERISTICS**

**Total weight of the equipment:** 21 ton

**DIMENSIONS OF SEGMENTS**

**Length:** 3 m

**Top slab width:** 4.20 m

**Bottom slab width:** 1.90 m

**Depth:** 2.70 m

**Weight:** 18 ton

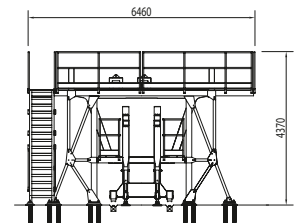
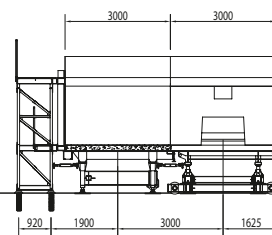
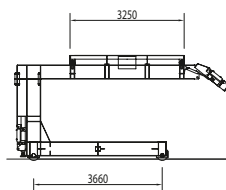
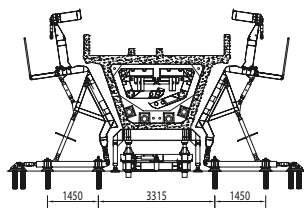
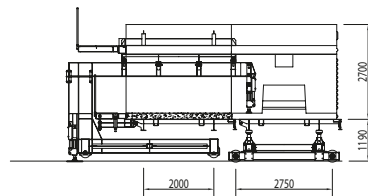
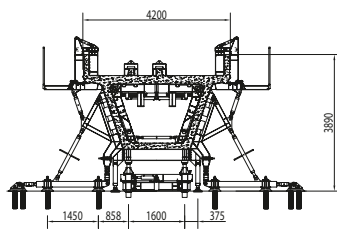
**EXECUTION**

**Client:** SNC Lavalin Serco – Rizzani de Eccher Spa a J.V.

**Project:** Vancouver Sky Train LRT Canada Line (Canada)

**Year of manufacture:** 2005

**Number of pieces:** 2





## MOULD Model SL-C-3.0-18.3

### EXECUTION

**Client:** Kiewit - Flatiron General Partneriat

**Project:** Port Mann Bridge Road (Canada)

**Year of manufacture:** 2009

**Number of pieces:** 3

### CHARACTERISTICS

**Total weight of the equipment:** 58 ton

### DIMENSIONS OF SEGMENTS

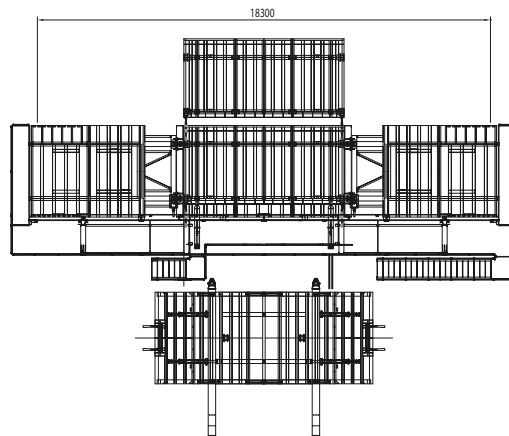
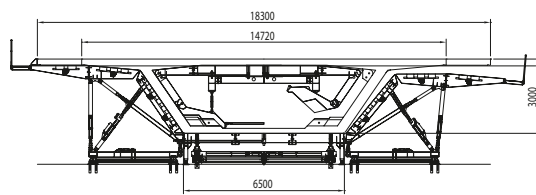
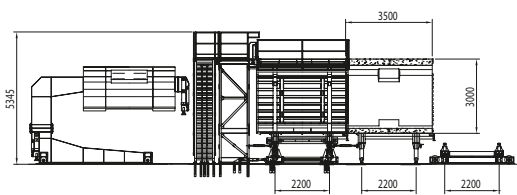
**Length:** 3.50 m

**Depth:** 3 m

**Top slab width:** 17.72 ÷ 18.30 m

**Bottom slab width:** 6.50 m

**Max weight:** 87 ton





**MOULD**  
**Model SL-C-1.876-7.95**

**EXECUTION**

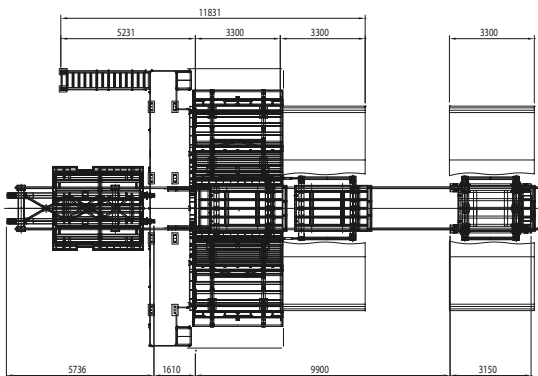
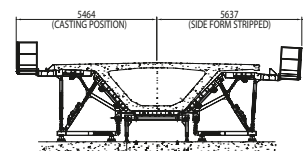
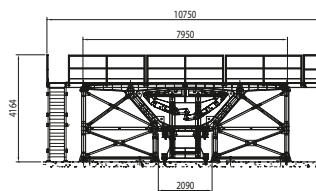
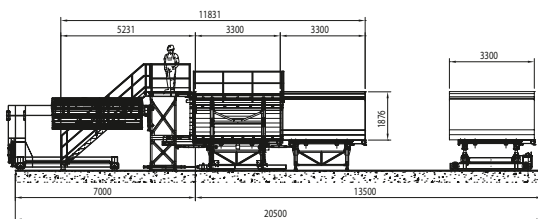
**Client:** Freyssinet Middle East  
**Project:** Al Safouh Transit System (UAE)  
**Year of manufacture:** 2008  
**Number of pieces:** 8

**CHARACTERISTICS**

**Total weight of the equipment:** 27 ton

**DIMENSIONS OF SEGMENTS**

**Length:** 3.30 m  
**Depth:** 1.876 m  
**Top slab width:** 9.75 m  
**Bottom slab width:** 2.09 m  
**Weight:** 30 ton



## MOULD Model SL-C-2.1-8.45

### CHARACTERISTICS

Total weight of the equipment: 27 ton

### DIMENSIONS OF SEGMENTS

Length: 3 m

Top slab width: 8.45 m

Bottom slab width: 2.70 m

Depth: 2.70 m

Weight: 26 ton

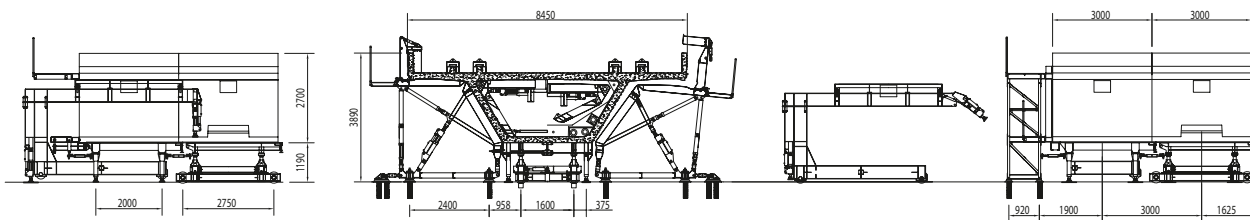
### EXECUTION

Client: SNC Lavalin Serco – Rizzani de Eccher Spa a J.V.

Project: Vancouver Sky Train LRT Canada Line (Canada)

Year of manufacture: 2005

Number of pieces: 3



## MOULD Model SL-C-2.4-10.0

### EXECUTION

**Client:** Rizzani de Eccher Spa

**Project:** Docklands Light Railways Extension (London - U.K.)

**Year of manufacture:** 2003

**Number of pieces:** 2

### CHARACTERISTICS

**Total weight of the equipment:** 36 ton

### DIMENSIONS OF SEGMENTS

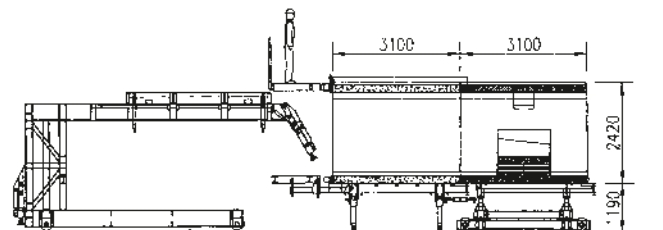
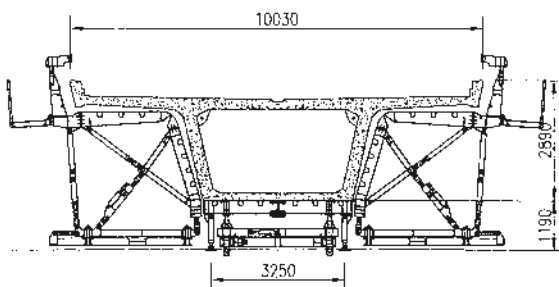
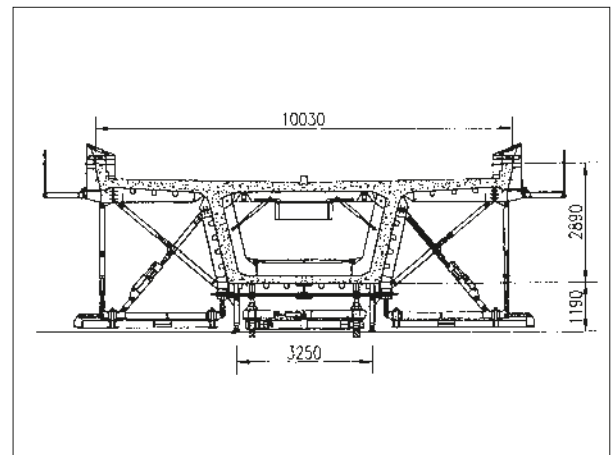
**Length:** 3.10 m

**Depth:** 2.89 m

**Top slab width:** 10.03 m

**Bottom slab width:** 3.64 m

**Weight:** 37 ton



## MOULD

### Model SL-V-24.4-5.5

#### EXECUTION

**Client:** Granite Construction Co.

**Project:** Hathaway Bridge (Florida – USA)

**Year of manufacture:** 2001

**Number of pieces:** 1

#### CHARACTERISTICS

**Total weight of the equipment:** 230 ton

#### DIMENSIONS OF SEGMENTS

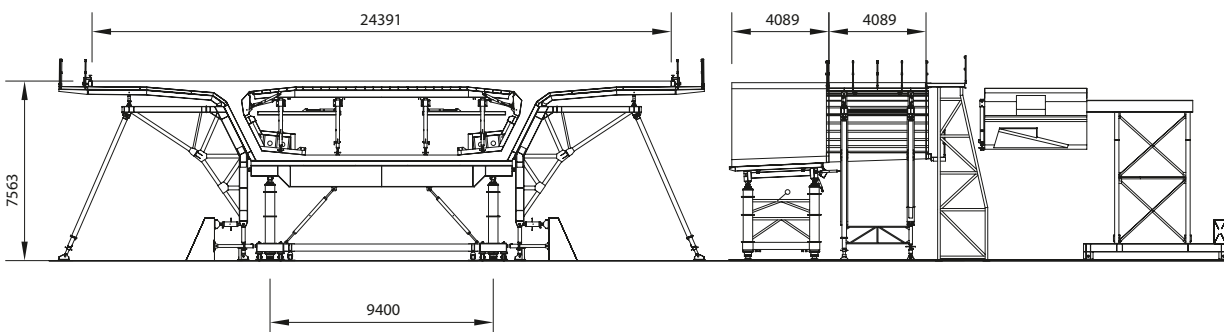
**Length:** 4.09 m

**Depth (variable):** 5.48 ÷ 3.54 m

**Top slab width:** 24.40 m

**Bottom slab width (variable):** 8.45 ÷ 10.39 m

**Weight:** 180 ton



**MOULD**  
**Model SL-C-2.30-3.50**

**EXECUTION**

**Client:** Rizzani de Eccher Spa  
**Project:** Metro Manila LRT Line 2 (Philippines)  
**Year of manufacture:** 1999  
**Number of pieces:** 3

**CHARACTERISTICS**

**Total weight of the equipment:** 17.50 ton

**DIMENSIONS OF SEGMENTS**

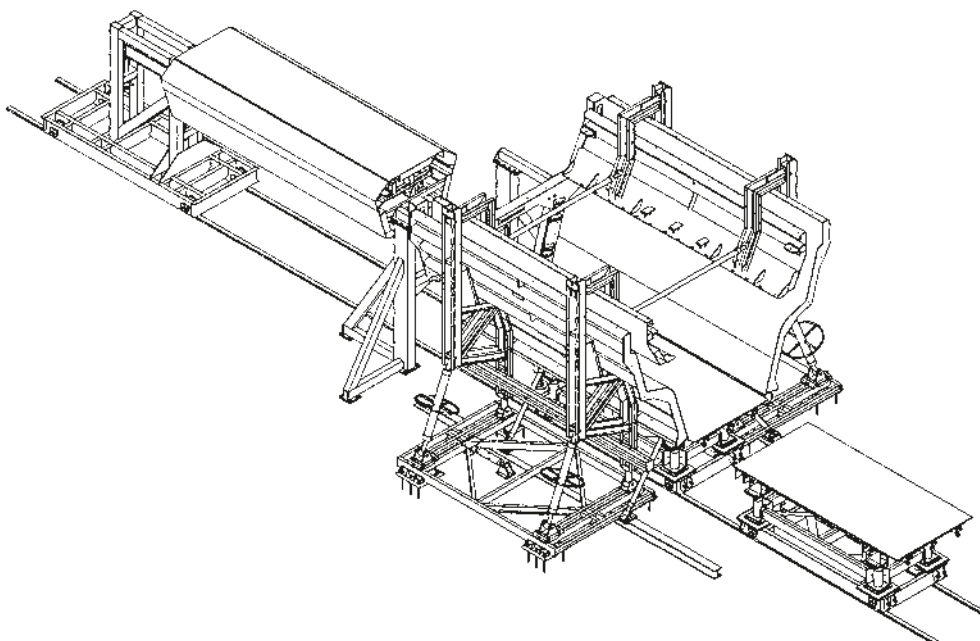
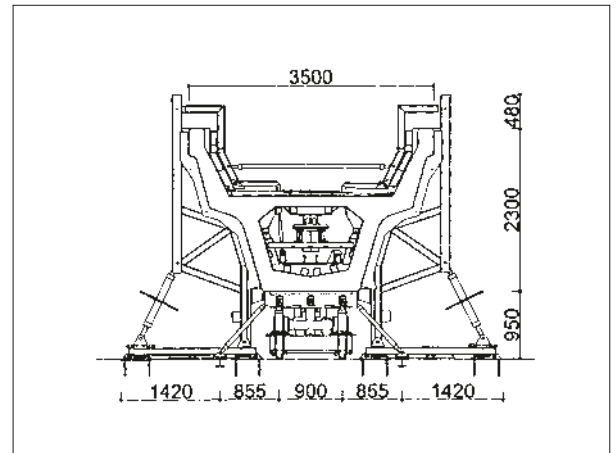
**Length (variable):** 3.0 ÷ 3.90 m

**Depth:** 2.30 m

**Top slab width:** 3.50 m

**Bottom slab width:** 1.40 m

**Weight:** 24 ton





**MOULD**  
**Model SL-C-2.66-5.14**

**EXECUTION**

**Client:** SAR – SC Infrastructure Inc./Agra Monenco Inc./Rizzani de Eccher Spa a J.V.

**Project:** Vancouver Sky Train LRT Millennium Line (British Columbia - Canada)

**Year of manufacture:** 1999

**Number of pieces:** 2

**CHARACTERISTICS**

**Total weight of the equipment:** 22 ton

**DIMENSIONS OF SEGMENTS**

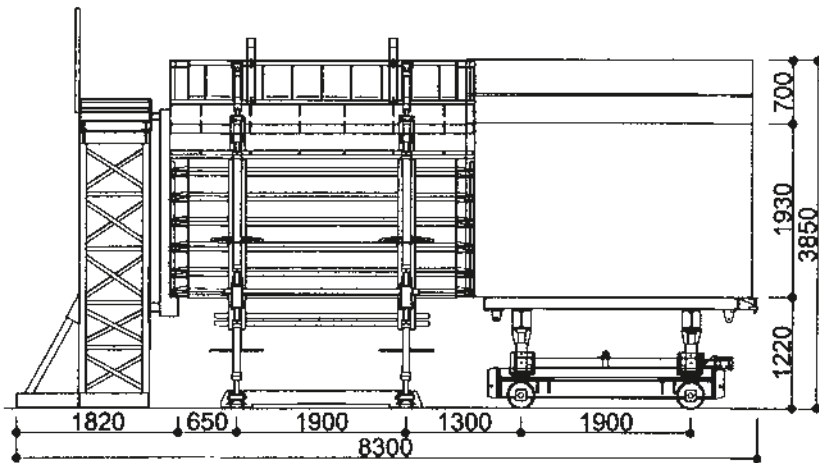
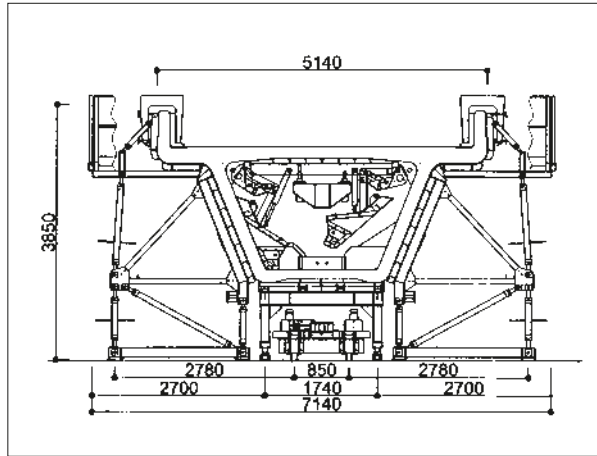
**Length:** 3.20 m

**Depth:** 2.66 m

**Top slab width:** 5.14 m

**Bottom slab width:** 2 m

**Weight:** 20 ton



**MOULD**  
**Model SL-C-2.66-7.69**

**EXECUTION**

**Client:** SAR - SC Infrastructure Inc./Agra Monenco Inc./Rizzani de Eccher Spa a J.V.

**Project:** Vancouver Sky Train LRT Millennium Line (British Columbia - Canada)

**Year of manufacture:** 1999

**Number of pieces:** 14

**CHARACTERISTICS**

**Total weight of the equipment:** 30 ton

**DIMENSIONS OF SEGMENTS**

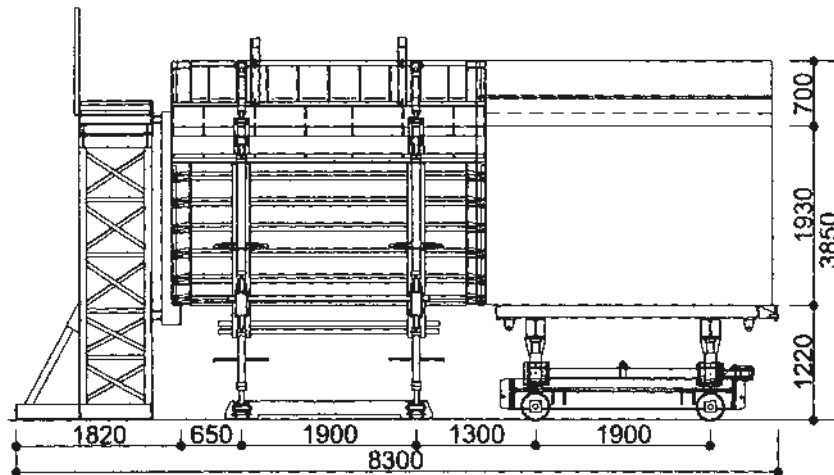
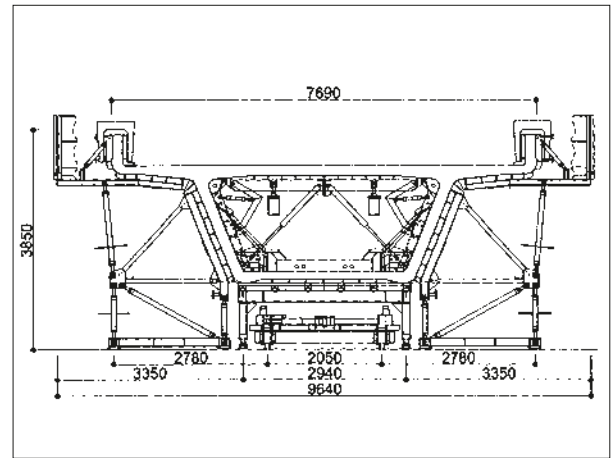
**Length:** 3.20 m

**Depth:** 2.66 m

**Top slab width:** 7.69 m

**Bottom slab width:** 3.20 m

**Weight:** 25 ton



## MOULD

### Model SL-C-2.16-6.50

#### EXECUTION

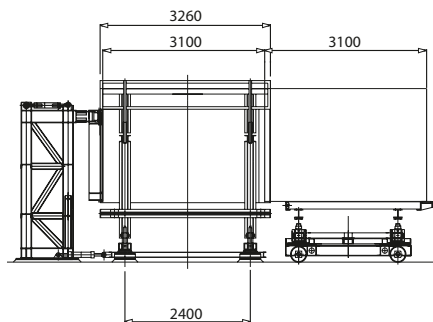
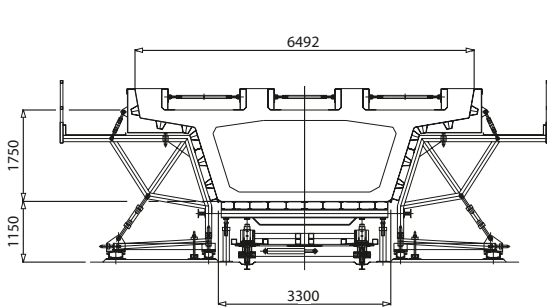
**Client:** Gammon - Rizzani de Eccher Spa a J.V.  
**Project:** Singapore LRT Bukit Panjang Line (Singapore)  
**Year of manufacture:** 1997  
**Number of pieces:** 9

#### CHARACTERISTICS

**Total weight of the equipment:** 35 ton

#### DIMENSIONS OF SEGMENTS

**Length:** 3.10 m  
**Depth:** 2.16 m  
**Top slab width:** 6.49 m  
**Bottom slab width:** 3.30 m  
**Weight:** 30 ton





**MOULD**  
**Model SL-C-2.16-3.90**

**EXECUTION**

**Client:** Gammon - Rizzani de Eccher Spa a J.V.  
**Project:** Singapore LRT Bukit Panjang Line (Singapore)  
**Year of manufacture:** 1997  
**Number of pieces:** 1

**CHARACTERISTICS**

**Total weight of the equipment:** 20 ton

**DIMENSIONS OF SEGMENTS**

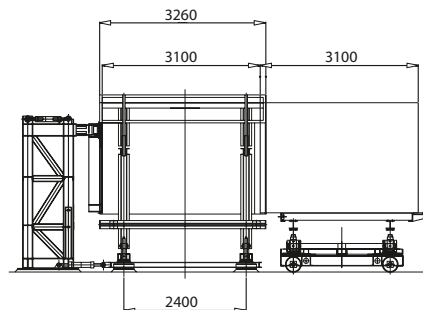
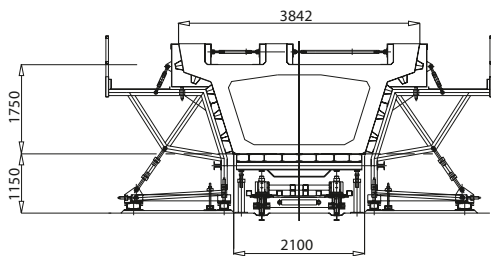
**Length:** 3.10 m

**Depth:** 2.16 m

**Top slab width:** 3.84 m

**Bottom slab width:** 2.10 m

**Weight:** 20 ton



**MOULD**  
**Model SL-C-2.20-16.50**

**EXECUTION**

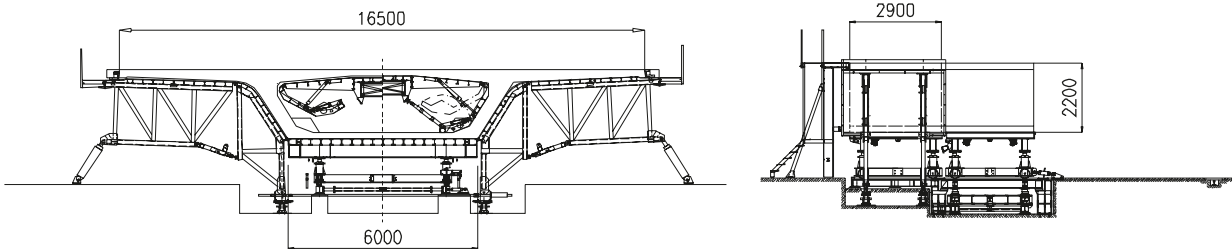
**Client:** Ashkrit Concrete  
**Project:** South Ayalon Interchange (Israel)  
**Year of manufacture:** 1993  
**Number of pieces:** 1

**CHARACTERISTICS**

**Total weight of the equipment:** 45 ton

**DIMENSIONS OF SEGMENTS**

**Length (variable):** 2.20 ÷ 2.90 m  
**Depth:** 2.20 m  
**Top slab width:** 16.50 m  
**Bottom slab width:** 6 m



**MOULD**  
**Model SL-C-1.80-8.25**

**EXECUTION**

**Client:** Ashkrit Concrete  
**Project:** South Ayalon Interchange (Israel)  
**Year of manufacture:** 1993  
**Number of pieces:** 1

**CHARACTERISTICS**

**Total weight of the equipment:** 20 ton

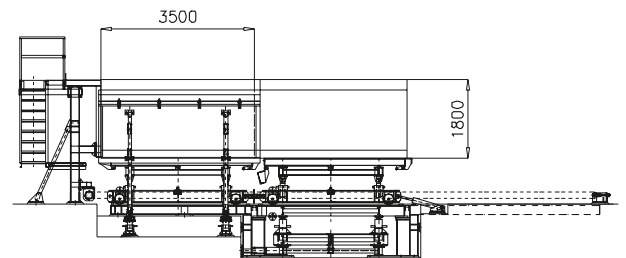
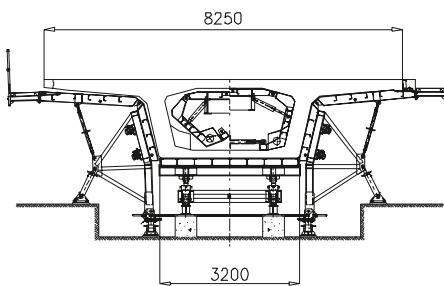
**DIMENSIONS OF SEGMENTS**

**Length:** 3.50 m

**Depth:** 1.80 m

**Top slab width:** 8.25 m

**Bottom slab width:** 3.20 m



## MOULD

### Model SL-V-3.50-12.80

#### EXECUTION

**Client:** Rizzani de Eccher Spa

**Project:** Caltanissetta – Gela Expressway (Italy)

**Year of manufacture:** 1992

**Number of pieces:** 3

#### CHARACTERISTICS

**Total weight of equipment:** 60 ton

#### DIMENSIONS OF SEGMENTS

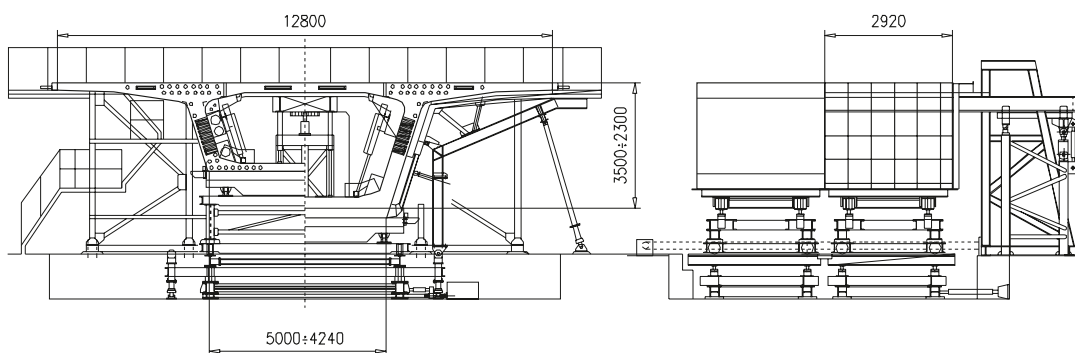
**Length:** 2.92 m

**Depth (variable):** 3.50 ÷ 2.30 m

**Top slab width:** 12.80 m

**Bottom slab width (variable):** 4.24 ÷ 5.0 m

**Weight:** 65 ÷ 61 ton





## MOULD Model SL-V-5.40-11.00

### EXECUTION

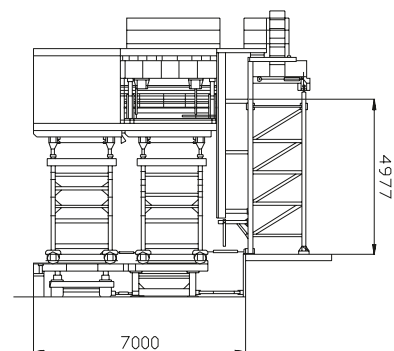
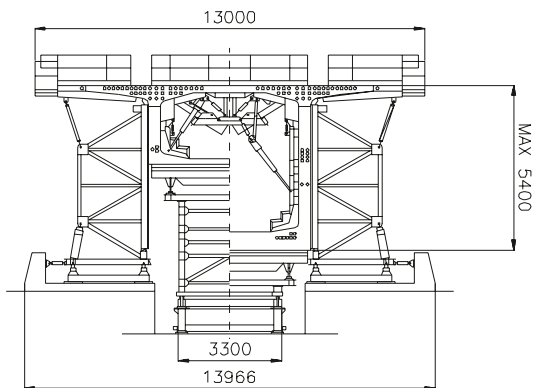
**Client:** Rizzani de Eccher Spa  
**Project:** Messina – Palermo Motorway (Italy)  
**Year of manufacture:** 1991  
**Number of pieces:** 2

### CHARACTERISTICS

**Total weight of the equipment:** 75 ton

### DIMENSIONS OF SEGMENTS

**Length:** 2.60 ÷ 3.04 m  
**Depth (variable):** 5.40 ÷ 2.50 m  
**Top slab width:** 11 m  
**Bottom slab width:** 5.40 m





# 10 LONG LINE MOULDS

DEAL EQUIPMENT REPORT





**MOULD**  
**Model LL-C-4.0-10.65**

**EXECUTION**

**Client:** Bilfinger & Berger  
**Project:** Lagos Osborne Bridge Project (Nigeria)  
**Year of manufacture:** 2009  
**Number of pieces:** 1

**CHARACTERISTICS**

**Total weight of the equipment:** 184 ton

**DIMENSIONS OF SEGMENTS**

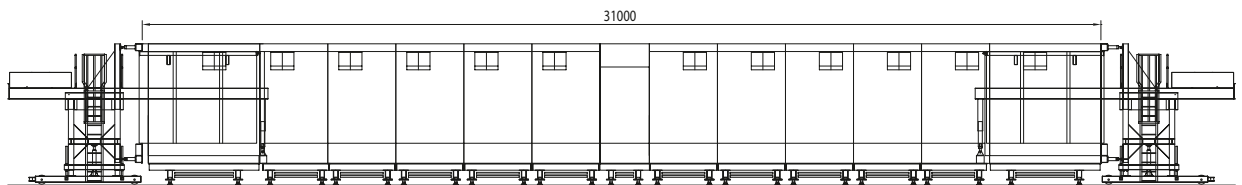
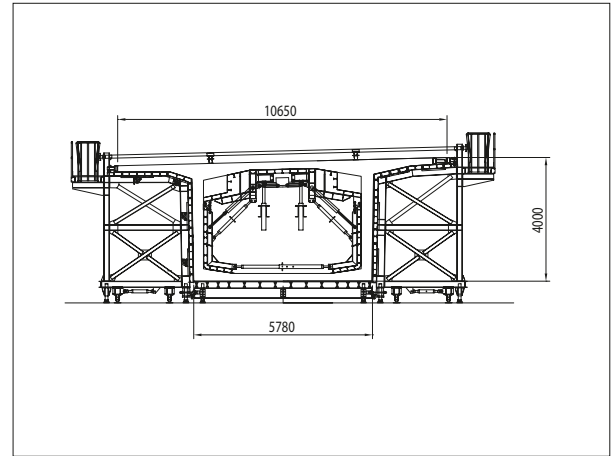
**Length:** 1.40 ÷ 3.60 m

**Depth:** 4 m

**Top slab width:** 10.65 m

**Bottom slab width:** 5.78 m

**Weight:** 80 ton



**MOULD**  
**Model LL-C-2.04-10.18-32.0**

**CHARACTERISTICS**

**Total weight of the equipment:** 72 ton

**DIMENSIONS OF SEGMENTS**

**Length:** 4 m

**Width:** 10.18 m

**Bottom width:** 8.17 m

**Depth:** 2.04 m

**Weight:** 58 ton

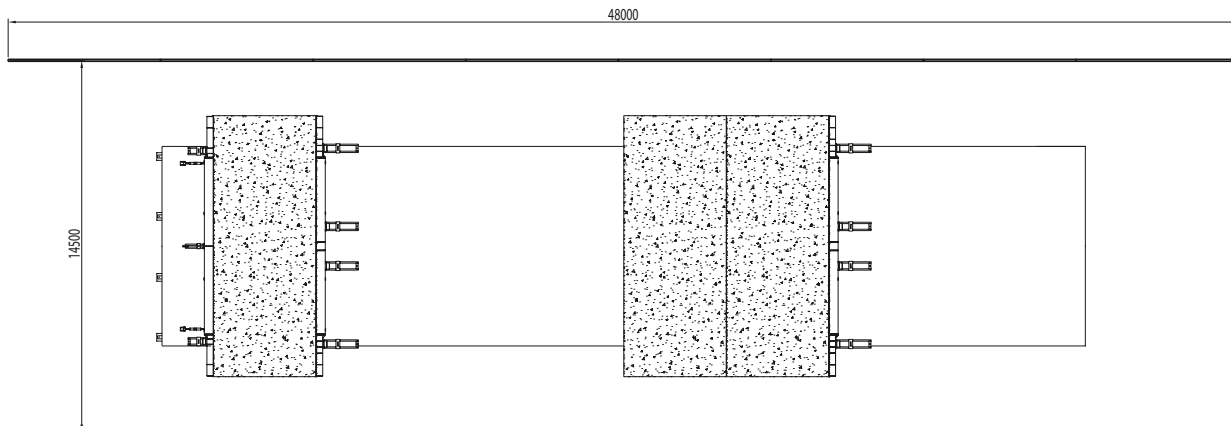
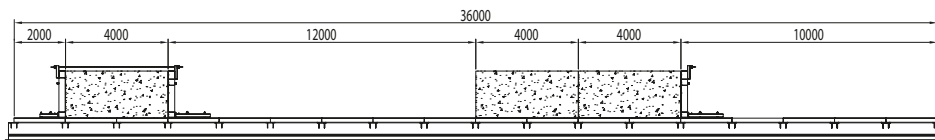
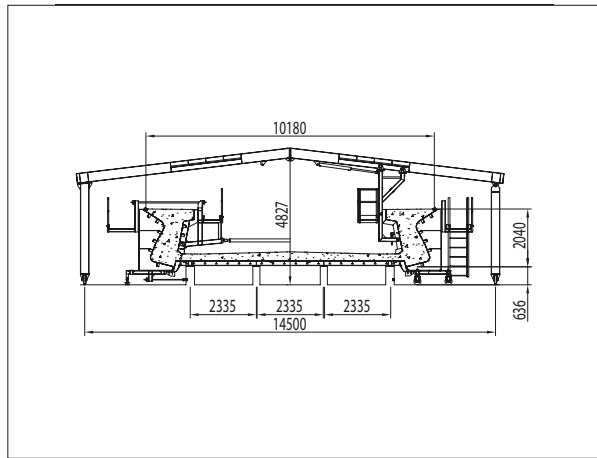
**EXECUTION**

**Client:** VFR Ltd VSL – Freyssinet – Rizzani de Eccher Spa a J.V.

**Project:** Dubai Metro Project – Red Line (UAE)

**Year of manufacture:** 2006

**Number of pieces:** 10



## MOULD Model LL-V-4.5-8.5

### EXECUTION

**Client:** Saudi Binladin Group

**Project:** Improvement of Jamarat Area and Bridge in Mina  
(Saudi Arabia)

**Year of manufacture:** 2005

**Number of pieces:** 4

### CHARACTERISTICS

**Total weight of the equipment:** 130 ton

### DIMENSIONS OF SEGMENTS

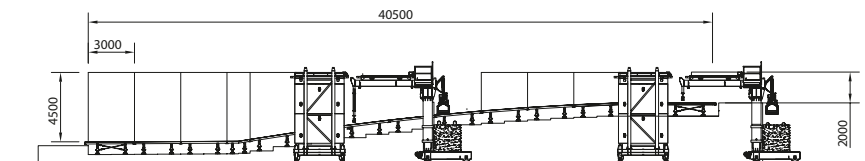
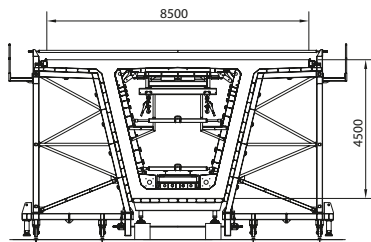
**Length:** 1.50 ÷ 3.0 m

**Top slab width:** 8.50 m

**Bottom slab width (variable):** 3.0 ÷ 4.19 m

**Depth (variable):** 4.50 ÷ 2.0 m

**Weight:** 50.0 ÷ 36.40 ton



## MOULD Model LL-V-8.5-25.0

### EXECUTION

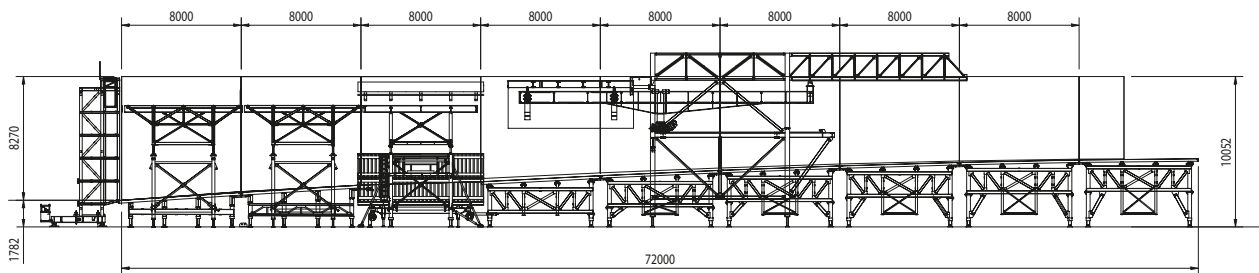
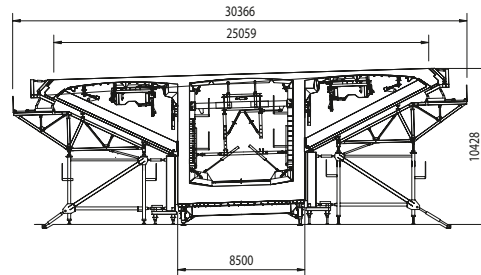
**Client:** KFM - Kiewit/Flatiron/Manson a J.V.  
**Project:** The San Francisco Oakland Bay Bridge  
(California – USA)  
**Year of manufacture:** 2002  
**Number of pieces:** 2

### CHARACTERISTICS

**Total weight of the equipment:** 750 ton

### DIMENSIONS OF SEGMENTS

**Length:** 8 m  
**Top slab width:** 25.07 m  
**Bottom slab width:** 8.50 m  
**Depth (variable):** 8.55 ÷ 5.55 m  
**Weight:** 700 ÷ 500 ton



**MOULD**  
**Model LL-C-2.30-8.10**

**EXECUTION**

**Client:** Rizzani de Eccher Spa  
**Project:** Metro Manila LRT Line 2 (Philippines)  
**Year of manufacture:** 1999  
**Number of pieces:** 4

**CHARACTERISTICS**

**Total weight of the equipment:** 16.50 ton

**DIMENSIONS OF SEGMENTS**

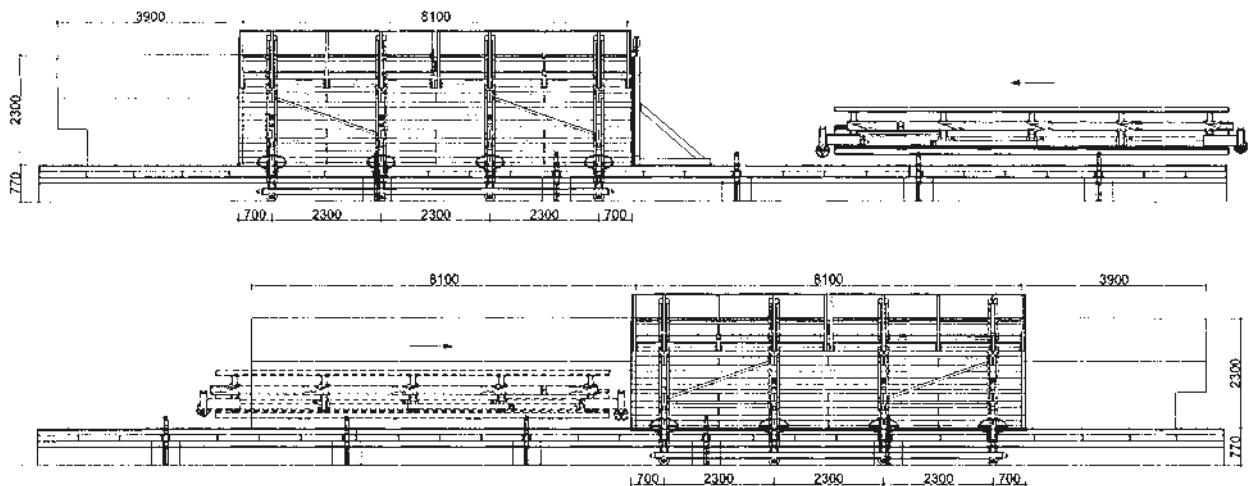
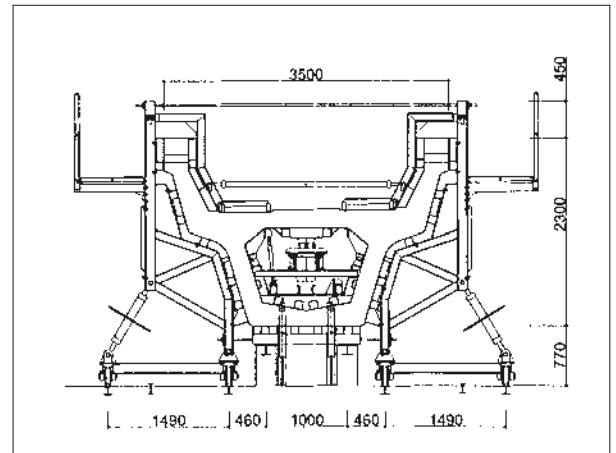
**Length (variable):** 5.30 ÷ 8.10 m

**Depth:** 2.30 m

**Top slab width:** 3.50 m

**Bottom slab width:** 1.40 m

**Max weight:** 50 ton





# 11 TRANSPORTERS

DEAL EQUIPMENT REPORT





## TRANSPORTER Model TE-1600-17

### EXECUTION

**Client:** China Railways Erju Co. Ltd  
**Project:** Hangzhou Bay Bridge (China)  
**Year of manufacture:** 2005  
**Number of pieces:** 1 full set

### CHARACTERISTICS

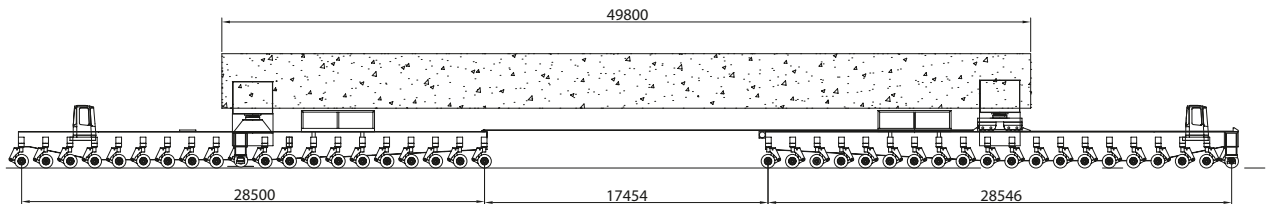
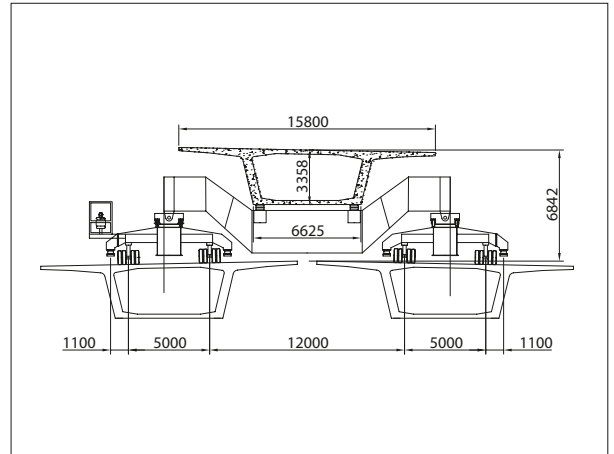
**Carrying capacity:** 1500 ton  
**Max gradient:** 2%  
**Max cross-fall:** 2%  
**Length of semi-trolley:** 28.85 m  
**Height:** 2.24 m  
**Gauge of semi-trolley:** 5 m  
**Number of wheels:** 640  
**Inflation pressure:** 8.50 bar  
**Total weight of the equipment:** 520 ton

### SPEEDS

**Travelling:**  
**with load** 0.1 ÷ 33.3 m/min  
**without load** 0.1 ÷ 66.6 m/min

### STEERING

**Max steering angle:** 15°





# 12 STRADDLE CARRIERS

DEAL EQUIPMENT REPORT



## MOBILE LIFT Model ML-50

### EXECUTION

**Client:** China Railways Erju Co. Ltd  
**Project:** Hangzhou Bay Bridge (China)  
**Year of manufacture:** 2005  
**Number of pieces:** 2

### CHARACTERISTICS

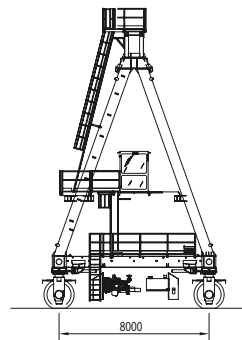
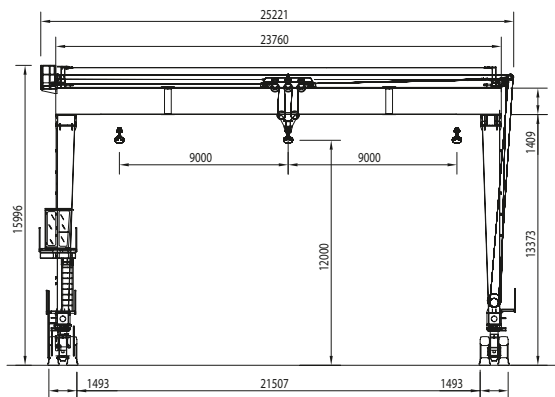
**Carrying/lifting capacity:** 50 ton  
**Gauge:** 23 m  
**Clearance between wheels:** 21.50 m  
**Height to the hook:** 12 m  
**Max longitudinal slope:** 2%  
**Tyres working pressure:** 9.50 bar  
**Total weight of the equipment:** 70.40 ton  
**Transverse travelling of the hook:**  $\pm 9$  m

### SPEEDS

**Lifting:**  
**with load** 0.1 ÷ 2.0 m/min  
**without load** 0.1 ÷ 4.0 m/min  
**Travelling:**  
**with load** 0.2 ÷ 20.0 m/min  
**without load** 0.2 ÷ 40.0 m/min  
**Transverse travelling:** 0.2 ÷ 7.0 m/min

### STEERING

**Max steering angle:** 90°



## MOBILE LIFT Model ML-800-A

### EXECUTION

**Client:** China Railways Erju Co. Ltd  
**Project:** Hangzhou Bay Bridge (China)  
**Year of manufacture:** 2005  
**Number of pieces:** 2

### CHARACTERISTICS

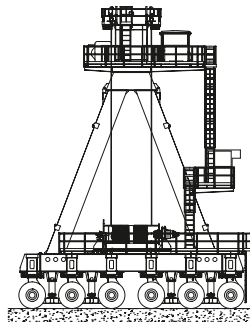
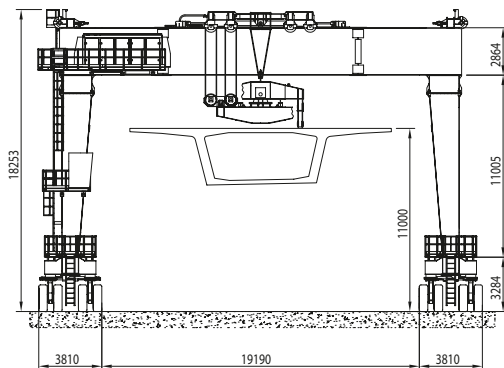
**Carrying/lifting capacity:** 800 ton  
**Gauge:** 23 m  
**Clearance between wheels:** 19.19 m  
**Height to the hook:** 9.10 m  
**Max longitudinal slope:** 2%  
**Tyres working pressure:** 9.50 bar  
**Total weight of the equipment:**  
**net** 330 ton  
**with wheels filled** 344 ton

### SPEEDS

**Lifting:**  
**with load** 0.1 ÷ 0.5 m/min  
**without load** 0.1 ÷ 1.0 m/min  
**Travelling:**  
**with load** 0.1 ÷ 12.0 m/min  
**without load** 0.1 ÷ 24.0 m/min

### STEERING

**Max steering angle:** 90°



## STRADDLE CARRIER Model SC-720-32

### EXECUTION

**Client:** KFM - Kiewit/Flatiron/Manson a J.V.  
**Project:** The San Francisco Oakland Bay Bridge  
 (California - USA)  
**Year of manufacture:** 2002  
**Number of pieces:** 1

### CHARACTERISTICS

**Carrying/lifting capacity:** 720 ton  
**Girder span length:** 41 m  
**Gauge:** 5 m  
**Longitudinal clearance between wheels:** 32.50 m  
**Max gradient:** 2.5%  
**Total weight of the equipment:** 495 ton

### MAIN DIMENSIONS

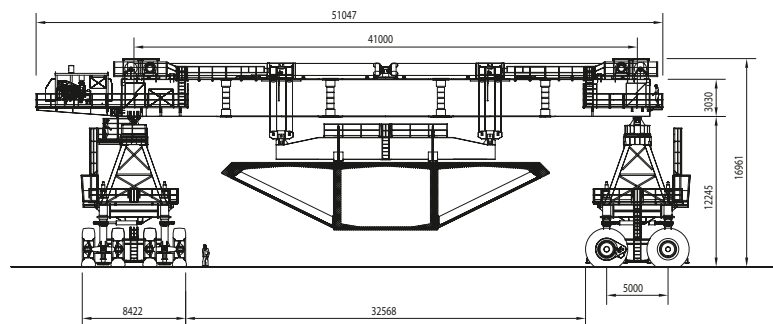
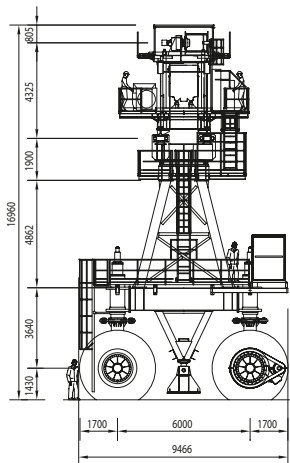
**Length:** 53.20 m  
**Height:** 17 m  
**Width:** 9.65 m  
**Height to the hook:** 11 m

### SPEEDS

**Lifting:**  
**with load** 0.1 ÷ 1.0 m/min  
**without load** 0.1 ÷ 2.0 m/min  
**Carrier longitudinal travelling:**  
**with load (0% gradient)** 5.0 ÷ 33.0 m/min  
**with load (2.5% gradient)** 5.0 ÷ 22.0 m/min  
**without load** 5.0 ÷ 67.0 m/min  
**Carrier transversal travelling:** 5 m/min

### STEERING RADIUS

**Min steering radius:** 60 m



## TRANSPORTER Model LB-40

### EXECUTION

**Client:** Gammon - Rizzani de Eccher Spa a J.V.  
**Project:** Singapore LRT Bukit Panjang Line (Singapore)  
**Year of manufacture:** 1996  
**Number of pieces:** 2

### CHARACTERISTICS

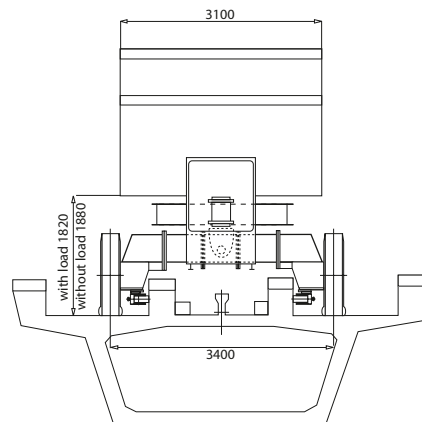
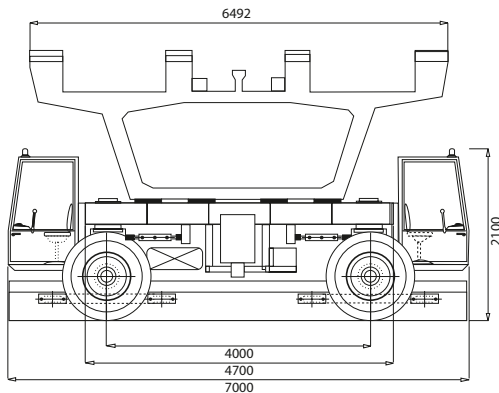
**Capacity:** 40 ton  
**Gauge:** 3.40 m  
**Total weight of the equipment:** 15 ton

### SPEEDS

**Travelling:**  
**with load** 83 m/min  
**without load** 183 m/min

### STEERING

Automatic system





## STRADDLE CARRIER Model SC-100-9.6

### EXECUTION

Client: Pizzarotti & C. Spa (Romania)

Year of manufacture: 2008

Number of pieces: 1

### CHARACTERISTICS

Carrying/lifting capacity: 100 ton

Gauge: 9.60 m

Height to the hook: 6.23 m

Max gradient: 5%

Total weight of the equipment: 73 ton

### MAIN DIMENSIONS

Overall length: 36.03 m

Overall height: 9.45 m

Overall width: 11.22 m

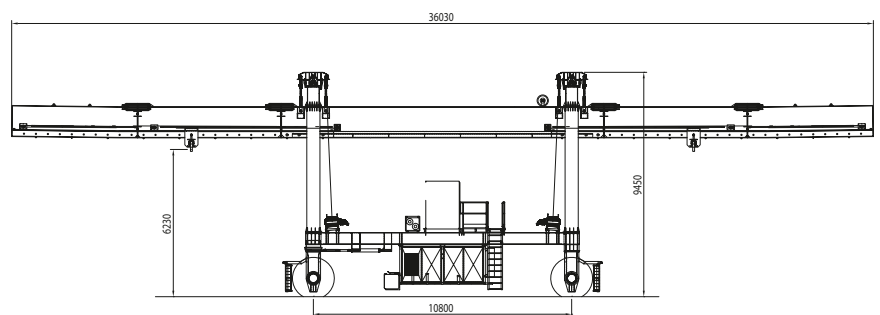
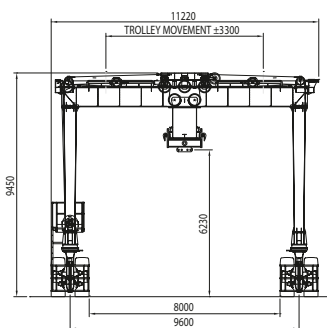
### SPEEDS

Lifting: 0.0 ÷ 1.5 m/min

Travelling:

with load 30 m/min

without load 68 m/min



## STRADDLE CARRIER Model SC-115-167.8

### EXECUTION

**Client:** Kiewit - Flatiron General Partnerariat

**Project:** Port Mann Bridge Road (Canada)

**Year of manufacture:** 2009

**Number of pieces:** 1

### CHARACTERISTICS

**Lifting capacity:** 115 ton

**Max cross-fall:**  $\pm 0\%$

**Max gradient:**  $\pm 2\%$

**Min radius:** 150 m

**Total weight of the equipment:** 66.62 ton

**Height:** 14.80 m

**Gauge:** 16.80 m

**Clearance inside width:** 15.20 m

**Number of wheels:** 8

### SPEEDS

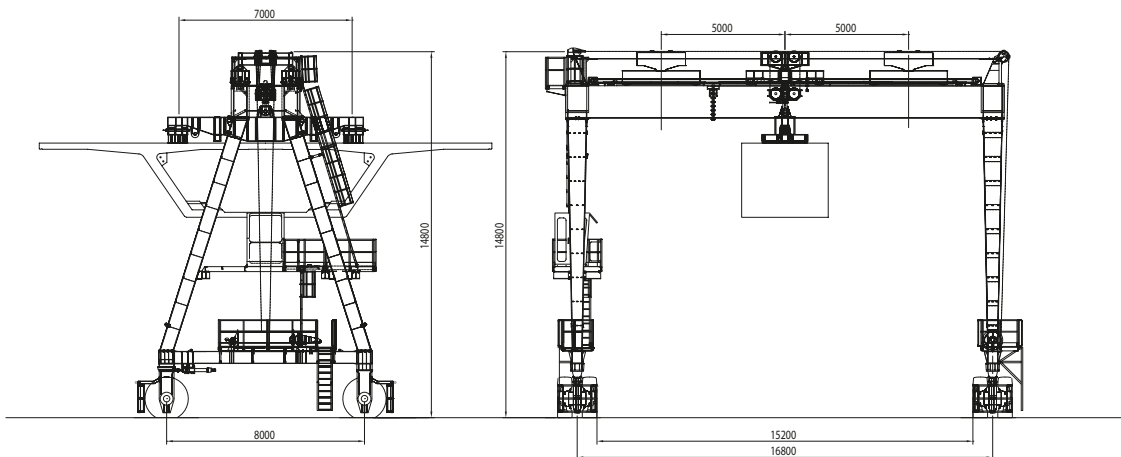
**Lifting:** 2 m/min

**Travelling:**

**with load** 60 m/min

**without load** 117 m/min

**Lifting trolley transversal speed:** 5 m/min



## STRADDLE CARRIER Model SC-90-6.6

### EXECUTION

**Client:** Bilfinger & Berger  
**Project:** Lagos Osborne Bridge Project (Nigeria)  
**Year of manufacture:** 2010  
**Number of pieces:** 1

### CHARACTERISTICS

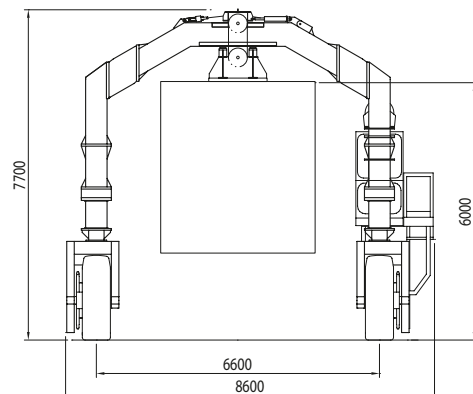
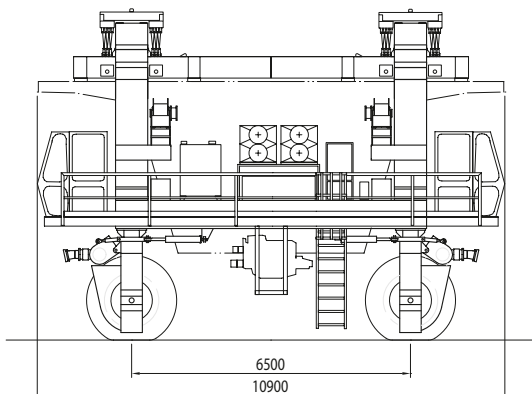
**Carrying/lifting capacity:** 90 ton  
**Gauge:** 6.60 m  
**Max gradient:** 6%  
**Height to the hook:** 6 m  
**Total weight of the equipment:** 48 ton

### MAIN DIMENSIONS

**Overall length:** 10.90 m  
**Overall height:** 7.70 m  
**Overall width:** 8.60 m

### SPEEDS

**Lifting:** 0.0 ÷ 0.4 m/min  
**Travelling:**  
**with load** 41 m/min  
**without load** 83 m/min



## STRADDLE CARRIER Model LC-85-5.6

### EXECUTION

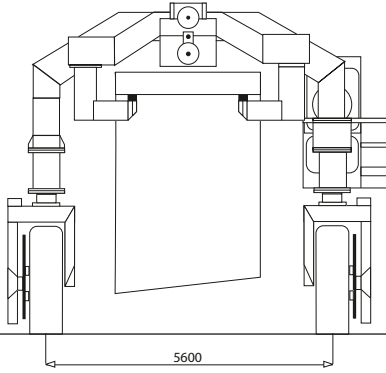
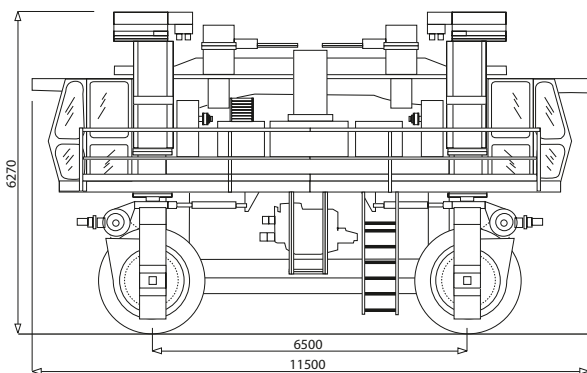
**Client:** GLF Construction Corporation  
**Project:** Sea Breeze Bridge (Florida – USA)  
**Year of manufacture:** 1996  
**Number of pieces:** 1

### CHARACTERISTICS

**Capacity:** 85 ton  
**Gauge:** 5.60 m  
**Height to the hook:** 4.80 m  
**Total weight of the equipment:** 25 ton

### SPEEDS

**Lifting:** 1 m/min  
**Travelling:** 100 m/min



## STRADDLE CARRIER Model SC-110-15

### EXECUTION

**Client:** Strait Crossing a J.V.

**Project:** Confederation Bridge (Canada)

**Year of manufacture:** 1995

**Number of pieces:** 1

### CHARACTERISTICS

**Capacity:** 110 ton

**Gauge:** 15 m

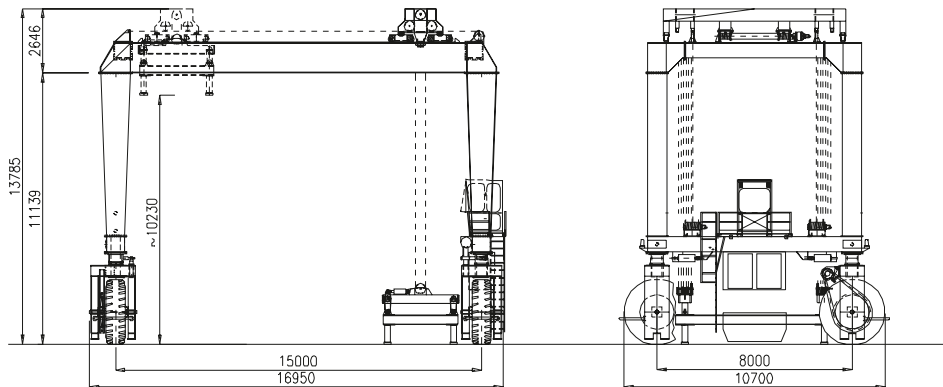
**Height to the hook:** 11.50 m

**Total weight of equipment:** 111 ton

### SPEEDS

**Lifting:** 1 m/min

**Travelling:** 60 m/min





# 13 GANTRY CRANES

DEAL EQUIPMENT REPORT





## HOIST MACHINE HM 800 Model GC-800-56

### EXECUTION

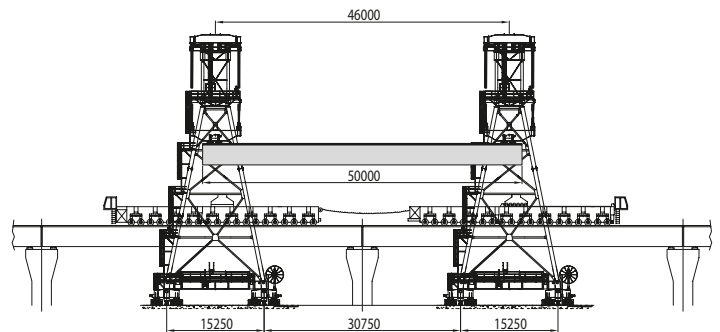
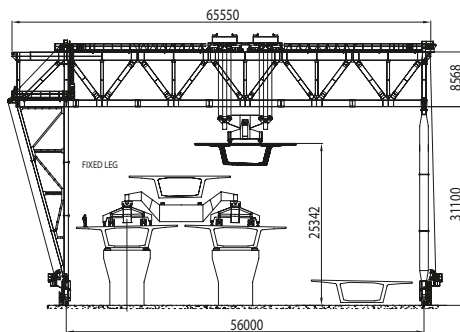
**Client:** China Railways Erju Co. Ltd  
**Project:** Hangzhou Bay Bridge (China)  
**Year of manufacture:** 2005  
**Number of pieces:** 2

### CHARACTERISTICS

**Lifting/carrying capacity:** 800 ton  
**Gauge:** 56 m  
**Height to the hook:** 28 m  
**Total weight of the equipment:** 550 ton

### SPEEDS

**Lifting:**  
**with load** 0.1 ÷ 0.5 m/min  
**without load** 0.1 ÷ 1.0 m/min  
**Transverse travelling:**  
**with load** 0.1 ÷ 1.0 m/min  
**without load** 0.1 ÷ 2.0 m/min



## GANTRY CRANE Model GC-75+75-32

### EXECUTION

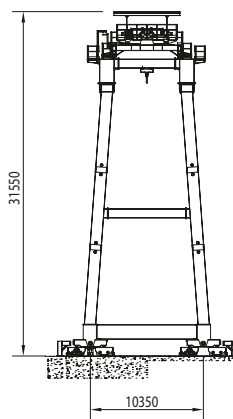
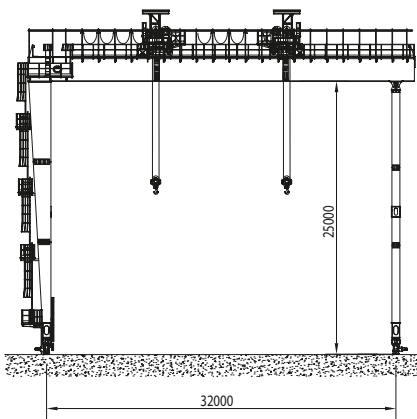
**Client:** KFM – Kiewit/Flatiron/Manson a J.V.  
**Project:** The San Francisco Oakland Bay Bridge  
(California – USA)  
**Year of manufacture:** 2002  
**Number of pieces:** 2

### CHARACTERISTICS

**Carrying/lifting capacity:** 75 + 75 ton  
**Gauge:** 32 m  
**Height to the hook:** 25 m  
**Total weight of the equipment:** 225 ton

### SPEEDS

**Lifting:**  
**with load** 0.2 ÷ 1.5 m/min  
**without load** 0.2 ÷ 5.0 m/min  
**Travelling:**  
**with load** 0.2 ÷ 15.0 m/min  
**without load** 0.2 ÷ 30.0 m/min



## HEAVY LIFTER Model GC-450-19

### EXECUTION

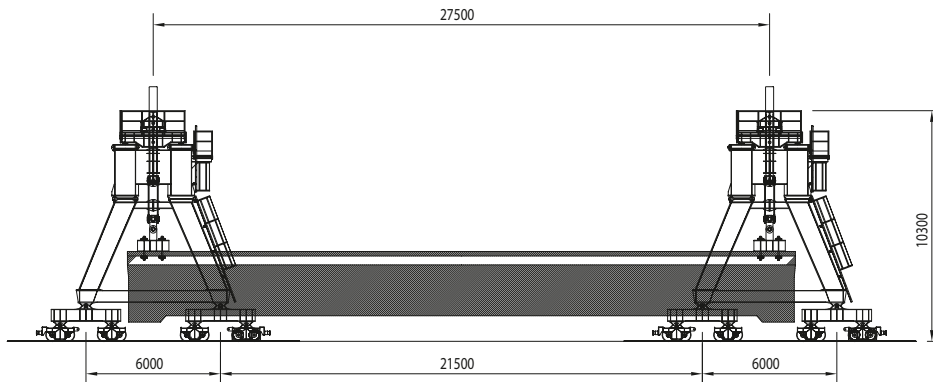
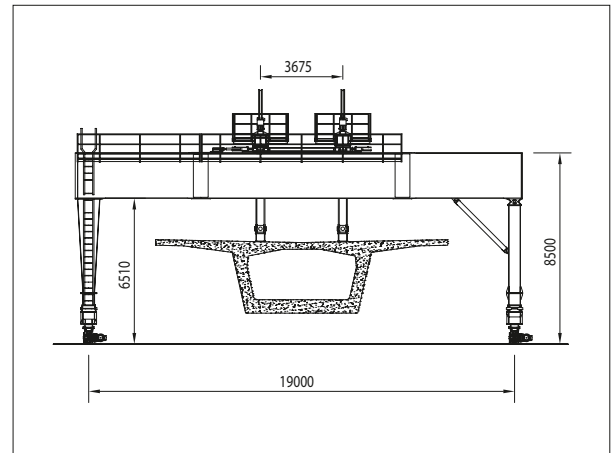
**Client:** VSL – Rizzani de Eccher Spa J.V. Ltd  
**Project:** High Speed Rail Project, Taipei-Kaohsiung (Taiwan)  
**Year of manufacture:** 2001  
**Number of pieces:** 2

### CHARACTERISTICS

**Carrying/lifting capacity:** 450 ton  
**Gauge:** 19 m  
**Height to the hook:** 4.57 m  
**Stroke:** 1.14 m  
**Lifting system:** step by step by hydraulic jacks having 500 mm stroke  
**Total weight of the equipment:** 87 ton

### SPEEDS

**Lifting:** 0.20 m/min (hydraulic jack)  
**Travelling:** 5 m/min



## GANTRY CRANE Model GC-100-20.5

### EXECUTION

**Client:** Rizzani de Eccher CCC a J.V.

**Project:** Cuscatlan Bridge (El Salvador)

**Year of manufacture:** 1997

**Number of pieces:** 1

### CHARACTERISTICS

**Capacity:** 100 ton

**Winch lifting capacity:** 96 ton

**Gauge:** 20.50 m

**Height to the hook:** 14.27 m

**Total weight of the equipment:** 75 ton

### SPEEDS

**Lifting:**

**with load** 0.76 m/min

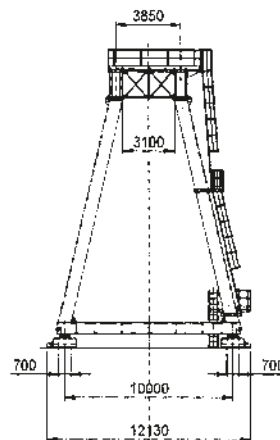
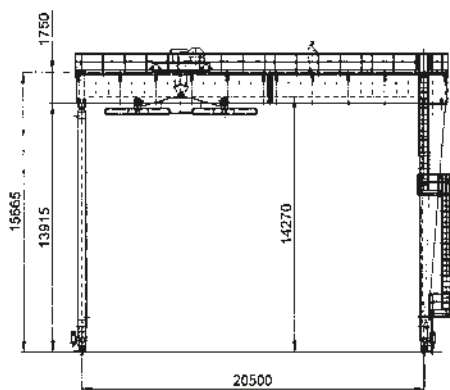
**without load** 1.52 m/min

**Travelling:**

**with load** 11.60 m/min

**without load** 23.20 m/min

**Winch trolley travelling:** 10 m/min



## GANTRY CRANE Model GC-40-28

### EXECUTION

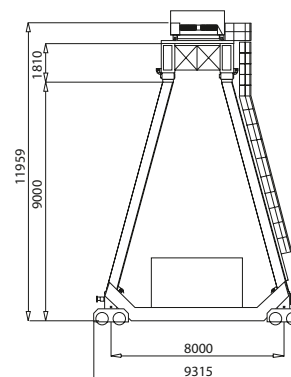
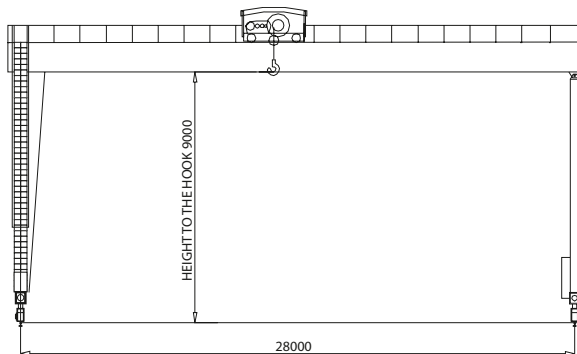
**Client:** Gammon - Rizzani de Eccher Spa a J.V.  
**Project:** Singapore LRT Bukit Panjang Line (Singapore)  
**Year of manufacture:** 1996  
**Number of pieces:** 2

### CHARACTERISTICS

**Capacity:** 40 ton  
**Gauge:** 28 m  
**Height to the hook:** 9 m  
**Total weight of the equipment:** 43 ton

### SPEEDS

**Lifting:**  
**with load** 0.17 m/min  
**without load** 1.72 m/min  
**Travelling:**  
**with load** 15.50 m/min  
**without load** 31 m/min  
**Winch trolley travelling:** 15 m/min



## GANTRY CRANE Model GC-100-27.5

### EXECUTION

**Client:** Rizzani de Eccher Spa

**Projects:** Messina – Palermo Motorway (Italy)  
Caltanissetta – Gela Expressway (Italy)

**Year of manufacture:** 1990

**Number of pieces:** 1

### CHARACTERISTICS

**Capacity:** 100 ton

**Gauge:** 27.50 m

**Height to the hook:** 14.50 m

**Total weight of the equipment:** 103 ton

### SPEEDS

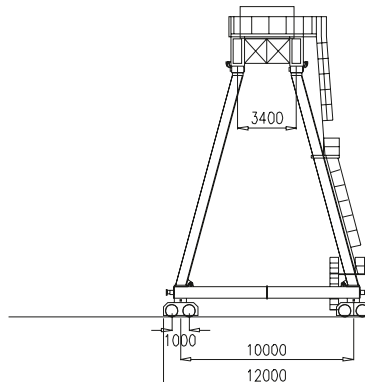
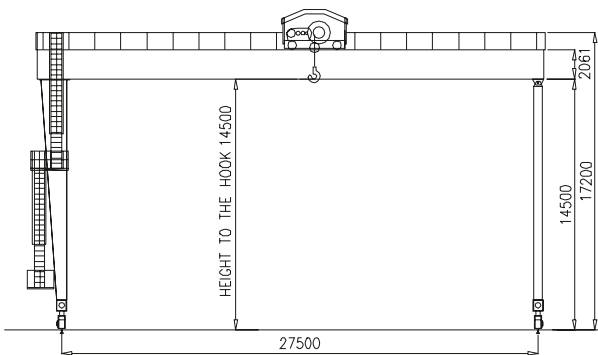
**Lifting:** 2.10 m/min

**Travelling:**

**with load** 15.50 m/min

**without load** 31 m/min

**Winch trolley travelling:** 10.10 m/min





## GANTRY CRANE Model GC-80-25

### EXECUTION

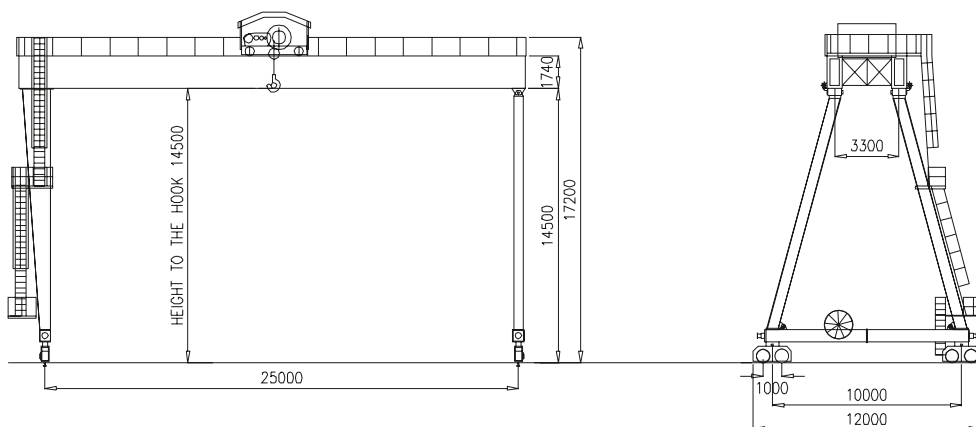
**Client:** Prefabbricati Gran Sasso  
**Project:** Roma – L'Aquila – Teramo Motorway (Italy)  
**Year of manufacture:** 1990  
**Number of pieces:** 1

### CHARACTERISTICS

**Capacity:** 80 ton  
**Gauge:** 25 m  
**Height to the hook:** 14.50 m  
**Total weight of the equipment:** 82 ton

### SPEEDS

**Lifting:** 2.10 m/min  
**Travelling:**  
**with load** 15.50 m/min  
**without load** 31 m/min  
**Winch trolley travelling:** 10.10 m/min



## GANTRY CRANE Model GC-75-19

### EXECUTION

**Client:** Rizzani de Eccher Spa

**Project:** S.S. 38 dello Stelvio Expressway (Italy)

**Year of manufacture:** 1990

**Number of pieces:** 1

### CHARACTERISTICS

**Capacity:** 75 ton

**Gauge:** 19 m

**Height to the hook:** 14.50 m

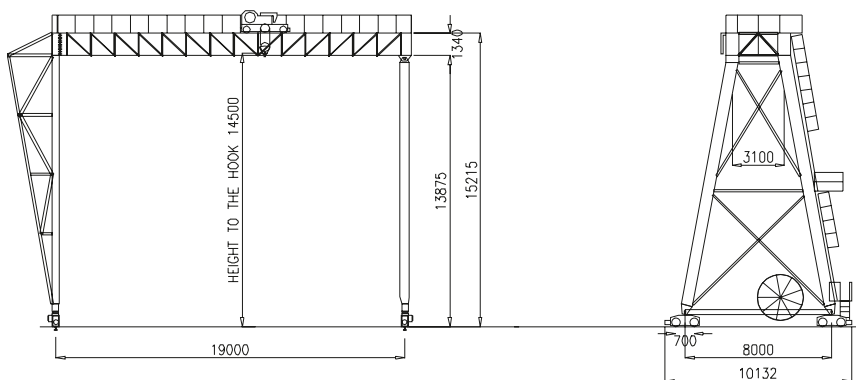
**Total weight of the equipment:** 39 ton

### SPEEDS

**Lifting:** 1.60 m/min

**Travelling:** 22.60 m/min

**Winch trolley travelling:** 10.10 m/min





## GANTRY CRANE Model GC-70-16

### EXECUTION

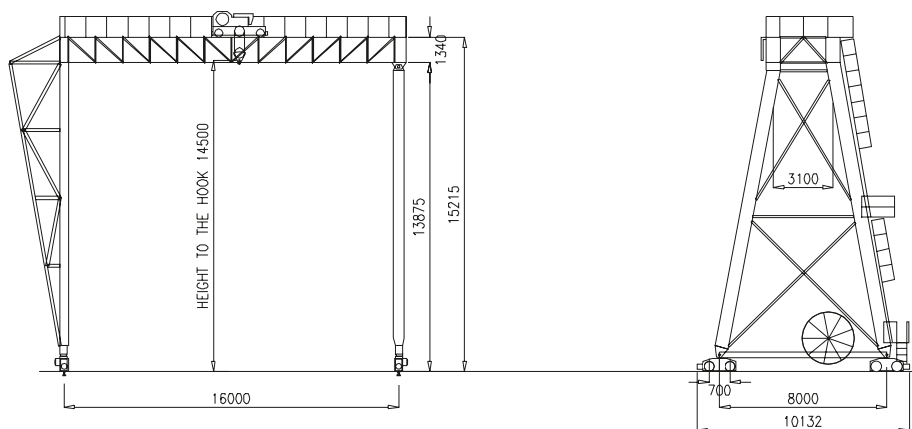
**Client:** Rizzani de Eccher Spa  
**Project:** Roma – L'Aquila – Teramo Motorway (Italy)  
**Year of manufacture:** 1989  
**Number of pieces:** 1

### CHARACTERISTICS

**Capacity:** 70 ton  
**Gauge:** 16 m  
**Height to the hook:** 14.50 m  
**Total weight of the equipment:** 37 ton

### SPEEDS

**Lifting:** 1.30 m/min  
**Travelling:**  
**with load** 11.30 m/min  
**without load** 22.60 m/min  
**Winch trolley travelling:** 13.70 m/min





# 14 HOPPERS

DEAL EQUIPMENT REPORT



# HOPPER 240

## EXECUTION

**Client:** Terminal Rinfuse Italia Spa (Italy)

**Year of manufacture:** 2011

**Number of pieces:** 1

## CHARACTERISTICS

**Max hopper capacity:** 240 cubic meter

**Working capacity:** 110 cubic meter

**Unloading capacity:** 1000 ton/h

**Gauge:** 28.40 m

**Span:** 12 m

**Clearance between wheels:** 10 m

**Total weight of the equipment:** 210 ton

## MAIN DIMENSIONS

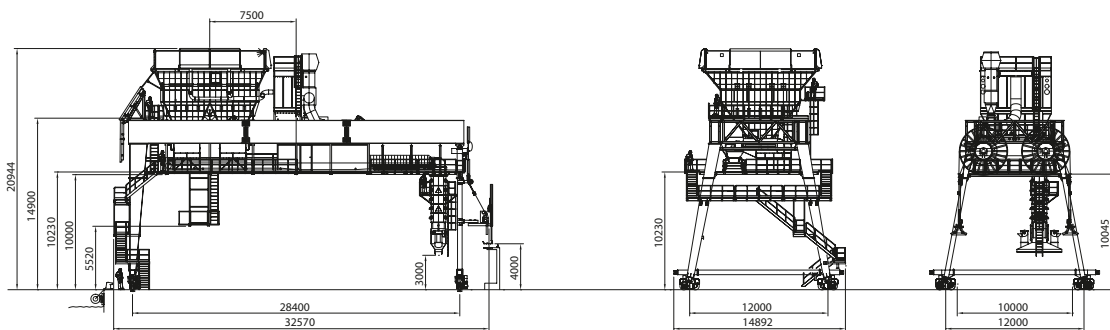
**Overall length:** 14.892 m

**Overall height:** 20.944 m

**Overall width:** 32.57 m

## SPEEDS

**Travelling:** 0 ÷ 15 m/min



## HOPPER 54

### EXECUTION

Client: ASPM – Monfalcone (Italy)

Year of manufacture: 2003

Number of pieces: 1

### CHARACTERISTICS

Hopper capacity: 54 cubic meter

Unloading capacity: 240 cm/h

Gauge: 7 m

Clearance between wheels: 6.20 m

Total weight of the equipment: 70 ton

### MAIN DIMENSIONS

Length: 7.10 m

Height: 13 m

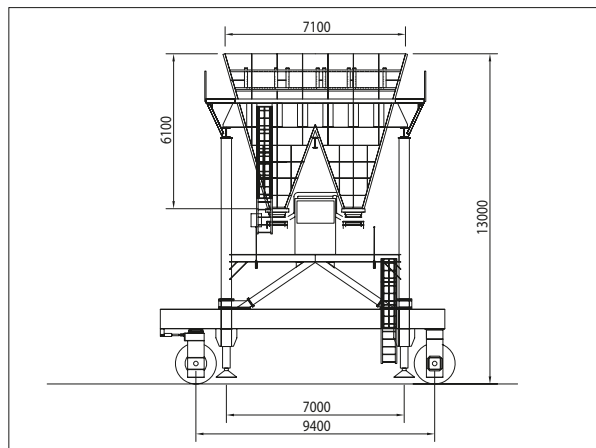
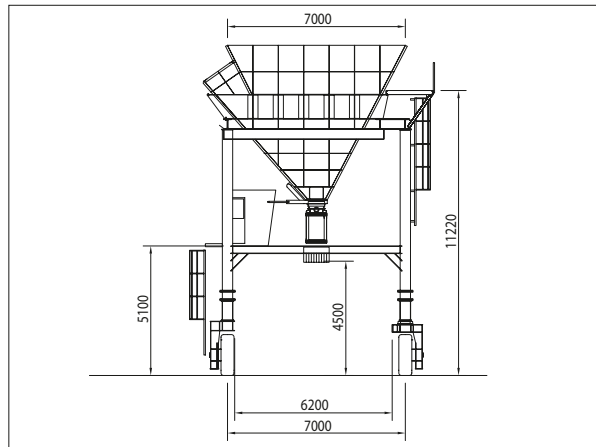
Width: 7 m

### SPEEDS

Travelling: 0.2 ÷ 20.0 m/min

### STEERING

Min steering radius: 33 m



# 15 EQUIPMENT FOR OIL AND GAS INDUSTRY

DEAL EQUIPMENT REPORT





## CABLE REEL

### EXECUTION

**Client:** Saipem – Sonsub Division (Korea)

**Year of manufacture:** 2010

**Number of pieces:** 1

### CHARACTERISTICS

**Reel overall width:** 3.30 ÷ 6.70 m

**Cable diameter:** 3.30 ÷ 6.70 m

**Lever winder trolley stroke:** 5.90 m

**Max reel weight including cable:** 450 ton

**Total weight of the equipment (reel not included):** 144 ton

### MAIN DIMENSIONS

**Overall length:** 7.750 m

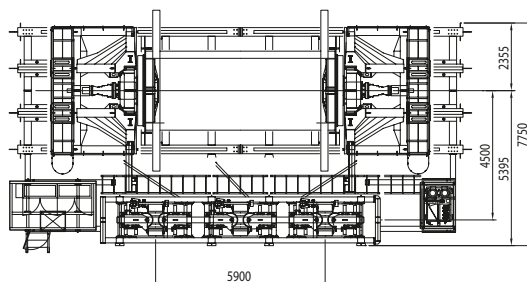
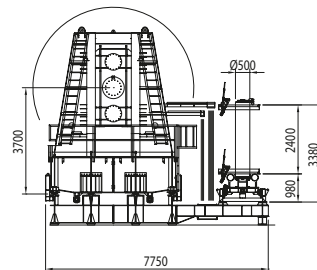
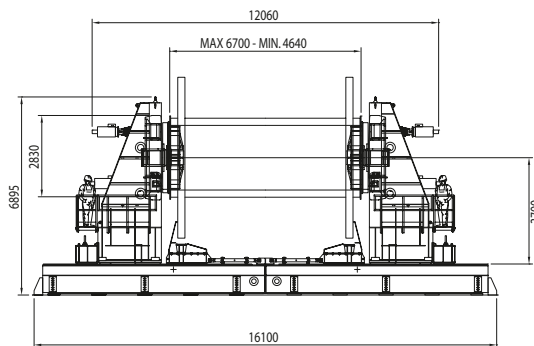
**Overall height:** 6.895 m

**Overall width:** 16.100 m

### SPEEDS

**Maximum drum rotation speed:** 2.70 rpm

**Linear cable speed:** 6 ÷ 20 m/min





# 16 OTHER EQUIPMENT

DEAL EQUIPMENT REPORT



# MANIPULATOR AND STRESSING PLATFORMS

## EXECUTION

**Client:** J. H. Reid  
**Project:** Route 36 (New Jersey - USA)  
**Year of manufacture:** 2008  
**Number of pieces:** 1 manipulator & 2 stressing platforms

## CHARACTERISTICS

**Carrying/lifting capacity:** 77 ton  
**Max gradient:** 6.50%  
**Max cross-fall:** 5.70%  
**Total weight:** 5.10 ton

## MANIPULATOR MAIN DIMENSIONS

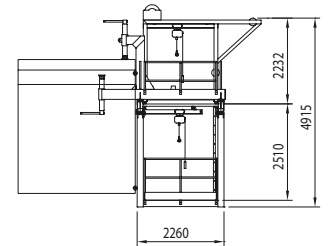
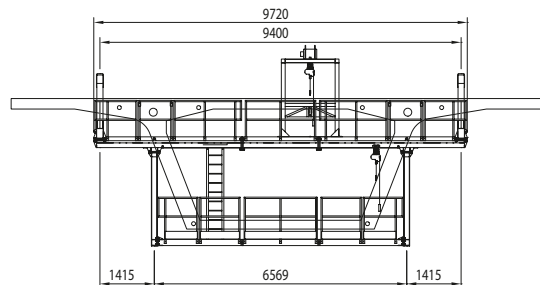
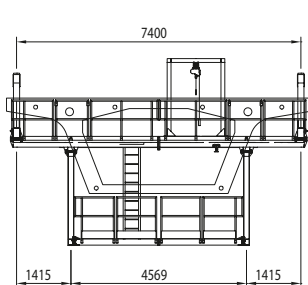
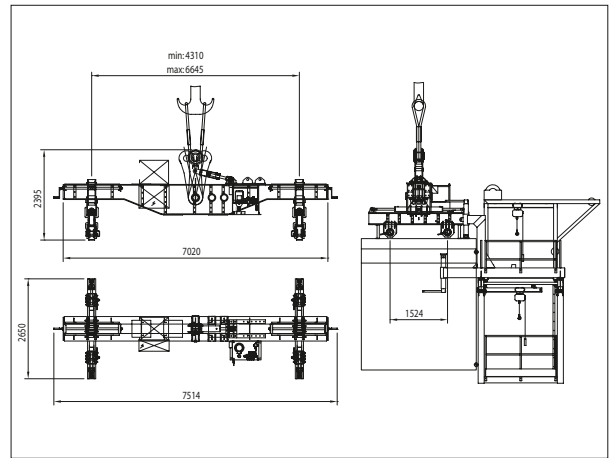
**Overall length:** 2.65 m  
**Overall height:** 2.395 m  
**Overall width:** 7.514 m

## STRESSING PLATFORM CHARACTERISTICS

**Distance between clamps:** 9.40 m  
**Lower platform width:** 4.569 ÷ 6.569 m  
**Maximum load on stressing platform:** 1.30 ton

## STRESSING PLATFORM MAIN DIMENSIONS

**Overall length:** 2.26 m  
**Overall height:** 4.915 m  
**Overall width:** 9.720 m





Deal Srl  
via Buttrio,36  
33050 Cargnacco  
(Udine) Italy  
T+39 0432 607900  
F+39 0432 607902  
deal@deal.it  
www.deal.it











 **DEAL**